

## DRAWING SCHEDULE

ASSY TITLE      741, 742, 743, 74B, 74S      ASSY No.

DRG. No.	MATRIX	DESCRIPTION	SIZE	ORIG. No.
741-01-40		FUEL PUMP BRKT	B	
741-01-41		FUEL PUMP BRKT	B	
741-01-66		FUEL PUMP BRKT	B	
741-01-67		FUEL PUMP BRKT	B	
741-10-01		C/V JOINT BOLT MOD	A	
741-10-02		HOOKE'S JOINT	A	
741-15-03		THRUST RING	A	
741-10-08		HOOKE'S JOINT	A	
741-15-03		FUEL COLLECTOR POT	C	
741-16-07		STARTER SHAFT	C	
741-16-14		ENGINE PLATES	C	
741-02-10		HEAVYWEIGHT BUSH FLWB	A	
742-01-05		FRONT SUSPENSION STRUT	B	
742-01-10		L.A.P. THRO' BOLT.	A	
742-01-28		TANK DIAPHRAGM	C	
742-04-02		STEERING WHEEL DETAIL	B	
742-10-01		CALIPER MTCY BLOCK	A	
742-10-03		OUTER C.V. JOINT BELL (WELDED)	A	
742-10-05A		CALIPER MOUNTING BLOCK	A	
742-10-05B		CALIPER MOUNTING BLOCK	A	
742-16-07		BMW ADAPTOR PLATE DOWEL	A	
743-10-09		CALIPER MOUNTING BLOCK	B	
743-16-11		TOYOTA CLUTCH PUSH ROD STOP	A	
743-16-12		TOYOTA /MK.9 ADAPTOR PLATE	D	

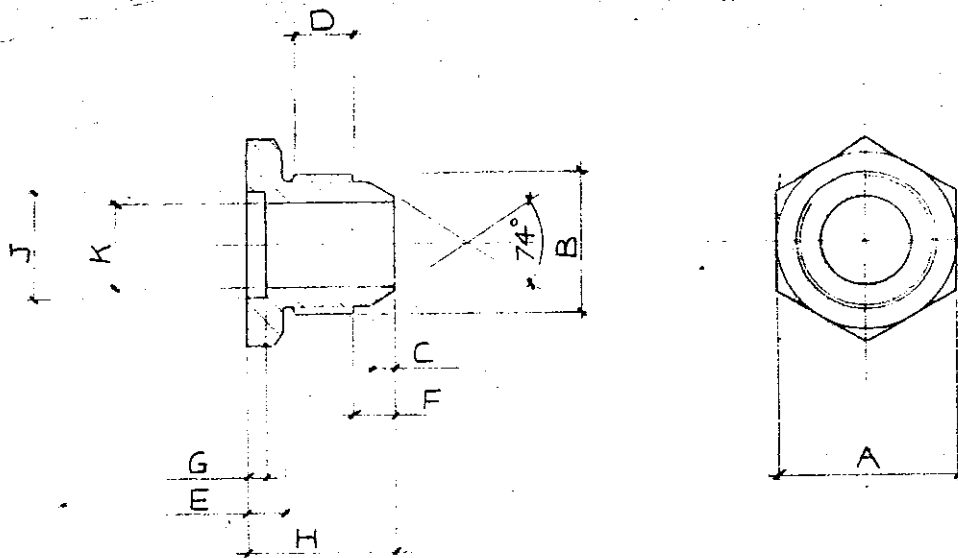
## DRAWING SCHEDULE

ASSY TITLE 741, 742, 743, 74B, 74S ASSY No. \_\_\_\_\_

DRG. No.	MATRIX	DESCRIPTION	SIZE	ORIG. No.
74B-01-03		LINK ANCHOR PLATE	C	
74B-10-01		CALIPER MOUNTING BLOCK	C	
741-01-56		NOSE ATT'M'T BRACKET	A	
741-11-02		GEAR LEVER	A	
741-11-03		GEARSHIFT SHAFT	A	
741-11-04		GEAR LEVER BUSH	A	
741-11-05		GEAR LEVER PIVOT BUSH	A	
741-11-06		BEARING LINK	A	
741-11-07		BEARING HOUSING	A	
741-11-08		HOUSING CAP	A	
741-11-10		BEARING PIVOT	A	
741-15-18		FLAP VALVE HOUSING	A	
741-15-19		ADAPTOR PLATE	A	
741-16-06		ENGINE BOLT	A	
742-05-02		A.R.B. MOUNTING CLAMP	A	
743-16-06		TOYOTA L.H. ENGINE MOUNT	A	
743-16-07		TOYOTA R.H. ENGINE MOUNT	B	
741-11-01		REAR GEARSHIFT BRACKET	A	
741-02-01		FRONT LOWER WISHBONE	D	







PART N°	A	B	C	D	E	F	G	H	J	K	TYPE
741-15-29	.88 DIA	3/4 UNF	0.18	0.38	0.12	0.22	NA	0.94	NA	38φ	-8
741-15-21	7/8 HEX	3/4 UNF	0.18	0.38	0.25	0.22	0.25	1.06	50φ	38φ	-8
741-15-20	1/4 HEX	1/16 UNF	0.18	0.38	0.25	0.31	0.12	1.06	75φ	62φ	-12
707-14-05	1/2 φ	7/8 UNF	0.12	0.42	0.13	0.22	N.A.	0.87	NA	50φ	-10
742-17-07	1/16 HEX	9/16 UNF	0.12	0.31	0.18	0.25	N.A.	0.81	N.A.	31φ	-6
741-17-10	1/2 HEX	1 5/16 UNF	0.25	0.50	0.25	0.38	N.A.	1.25	NA	81φ	-16
742-17-06	9/16 HEX	7/16 UNF	0.08	0.31	0.18	0.18	N.A.	0.75	NA	22φ	-4
80SV-15-08	7/8 HEX	9/16 UNF	0.12	0.31	0.18	0.25	N.A.	0.81	NA	31φ	-6
763-14-02	1 HEX	7/8 UNF	0.12	0.38	0.18	0.22	N.A.	0.87	NA	50φ	-10
82G-15-03	1/2 HEX	3/8 UNF	0.05	0.25	0.15	0.10	N.A.	0.65	NA	14φ	-3
84C-14-47	7/16 φ	7/16 UNF	0.08	0.31	0.18	0.18	N.A.	0.75	NA	06φ	-4

5	REDRAWN.			
---	----------	--	--	--

ISSUE	REVISION	SIGNED	ACTION	DATE
-------	----------	--------	--------	------

DIMENSIONS IN INCHES - MILLIMETRES (MM.) THIRD ANGLE PROJECTION: DO NOT SCALE: IF IN DOUBT - ASK

TOLERANCES - UNLESS OTHERWISE STATED	
FRACTIONS ± 1/32	METRIC DIMENSIONAL ± .3
DEC. 2PL ± .010	ANGULAR ± 1/2°
DEC. 3PL ± .003	

**march** engineering limited ©

**NOTICE**  
This drawing is the property of March Engineering Ltd. It must not be reproduced or copied and must be returned at any time upon demand. This drawing is also confidential and must be disclosed to no other than an employee requiring it for the job. It is a condition under which this job is placed that no goods will be made modified or repaired from this drawing except in accordance with an official order from March Engineering Ltd.

TITLE AEROQUIP FITTING (AL ALLOY)		MATL. AL ALLOY	No. OFF/CAR AS REQ'D
DRN T A H		SPEC. HE30TF	DRG No: 741-15
DATE 12-4-84		TREATMENT —	- 20
SCALE F 5	FINISH CLAN	MATRIX No.	

# DRAWING SCHEDULE

LATEST ISSUE

ASSEMBLY TITLE

SHEET NO.

01 - CHASSIS

DRG. NO.	DESCRIPTION	ISSUE	SIZE	ORIG. NO.
742-01-01	REAR WING & OIL TANK MTC. BRKT.	-	D	
742-01-02	DITTO - LOWER MTG BUSH.	41-7-13	B	708-16-03
742-01-03	" - RAW NUT MTG BUSH.	-	B	732-01-102
742-01-04	ROLL OVER BAR.	-	D	
742-01-05	FRONT SUSPENSION STRUT RADIATOR & BODY FRONT	1-1-6	B	
742-01-06	MOUNTING FRAME - TOP	-	D	
742-01-07	RADIATOR & BODY MTG FRAME BOTTOM	-	D	
742-01-08	BONDED NOSE - MTC. TUBE	-	D	
742-01-09	NOSE LOCATION PIN	-	A	
01-10	STUB - LINK ANCHOR PLATE	4-6-13 <sup>D</sup>	A	
01-11	SKIN FOOT BOX LH	-	BC	
01-12	" " " RH	-	BC	
01-13	SIDE RAD. MOUNTING FRAME	-	C	
01-14	" " " " TUBE BOSS	-	A	
01-15	" " " " "	-	B	712-18-01
01-16	SQUARE NOSE BAR	-	C	
01-17	FRONT PLATE DOUBLER - TOP.	-	A	
01-18	RAD. MTG. FRAME TOP BUSH.	-	B	708-16-03
01-19	LOWER RAD. MTG. FRAME BUSH.	-	B	708-16-03
01-20	SAFETY SWITCH EARTH BRKT.	-		
01-21	REAR DIAPHRAGM RAD MTG	2-1-6	C	
01-22	FIBREGLASS ROLL-OVER BAR	-	W/D	
01-23	MONSTER BRKT REAR OILTANK	-	D	
01-24	OIL COOLER MTG. BRKT. (DIAPHRAGM MTG)	-	A	
01-25	NOSE FRAME BOSS.	-	B	708-16-03
01-26	RAD MTG "	41-9-6	B	---
01-27				
01-28	REAR DIAPHRAGM OIL COOLER MTG.	2-1-6 3	C	
29	MONSTER BRKT			
30	MONSTER BRKT BUSH		E	

SHEET  
#

SHEETS.

# march

ENGINEERING LTD.





# DRAWING SCHEDULE

ASSEMBLY TITLE

03 REAR SUSPENSION

ISSUE NO

DOC. NO

DESCRIPTION

ISSUE SIZE

ORIG. NO

742-03-01

RXM PLATE FOR FRANKLINS 742

A











# DRAWING SCHEDULE

ASSEMBLY TITLE

ASSET NO

10 DRIVE SHAFTS

DOC. NO	DESCRIPTION	SCALE	SIZE	ORIG. NO
742-10-01	CALIPER MTA BLOCKS	1	A	-
-10-02	DRIVESHAFT.			
10-03	OUTER CV BELL, WELDED CON.	1/4-1-1	A	
10-04	SLEEVE 10TV CV JOINTS		SKETCH	
10-05	CALIPER MTA Block CP2803	5-1-12	<del>SKETCH</del> 'A'	
10-06	DRIVESHAFT.		<del>C</del>	
07	" LAYOUT		D.	

**march**

ENGINEERING LTD.

SHEETS

# DRAWING SCHEDULE

ASSEMBLY TITLE

11 GEAR SHIFT

SHEET NO

DRG. NO

DESCRIPTION

ISSUE SIZE

DRG. NO

742-11-01

GEARSHIFT FORK

4-5-4

A

# DRAWING SCHEDULE

ASSEMBLY TITLE

HEET NO

12 Wing & Body Work

DRG. NO	DESCRIPTION	ISSUE	SIZE	DRG. NO
742-12-01	REAR WING SUPPORT	-	B	732-12-08
742-12-02	DITTO - MTC. BUSHES	4-3143	B	PAGE 4 708-16-03
12-03	REAR WING ADJUSTMENT PIN	-	A	
12-04	WING MTC. RUBBER BUSH	-	A	
12-05	NOSE LAYOUT - SIDE & PLAN	-	D	
12-06	THREADED NOSE BOBBIN	-	A	
12-07	NOSE SPLITTER	-	D	
12-08	AIR BOX	-	D	
12-09	ELEVATIONS OF SINGLE SEATER	-	C	
12-10	BOBBIN	-	A	
12-11	LOCATING PINS	-	A	
-12	ENGINE COVER MTC. BRKT. - RH.		A	
-13	" " " " " " LH.		A	
-14	TAIL SUPPORT		<del>A</del>	
-15	ENGINE COVER		N/D	
-16	COCKPIT		N/D	
-17	REAR WING SUPPORT - <small>FOR REAR MOUNTED OIL TANK</small>		B	732-12-08
-18	NACA DUCT DETAIL IN TAIL SEC.		C	
-19	AIR BOX BASE		C	
-20	CRASH HOOP COVER BOBBIN			SKETCH
-21	NOSE (4" SPLITTER <small>FOR USE WITH SIDE RAD</small> )		N/D	
-22	WING TRAILING SUPPT.			732-12-08
-23	WING BRKT		A	
-24	WING		C	732-12-17
-25	" REAR SUPPT		B	732-12-08
-26	BOBBIN		B	<small>SEE BOBBINS IN 'A' CABINETS</small>
-27	"		B	742-12-26
-28	HEXAGONAL BOBBIN		B	742-12-26
-29	" "		B	742-12-26
-30	BOBBIN		B	742-12-26

## march

ENGINEERING LTD.

SHEETS



# DRAWING SCHEDULE

ASSEMBLY TITLE

POST NO.

## 13 WATER SYSTEM

DET. NO	DESCRIPTION	ISSUE	SIZE	DESK. NO.
742-13-01	WATER/OIL RADIATOR	1	D.	
742-13-02	WATER RAD-SIDE REAR.		D.	
-11-03	" " " " BMW		D.	
-11-04	" " MTC - BRACKET.		A.	
-11-05	HEADER TANK.		BC	
-11-06	SWIRL POT.		B.	
-11-07	HEADER TANK MTC. BRKT.		A.	
-11-08	RADIATOR / DUMP CONN. BMW		A.	
-11-09	SWIRL POT TO RAD. CONN. BMW		B.	
-11-10	SIDE RAD. REAR BRACE.		B.	
-11-11	TEMP TAKE OFF BOSS		B.	752-01-101
-11-12	RADIATOR STONEGUARD.		A.	
-11-13	" " "		A.	742-13-12
-11-14	STONEGUARD MTC. BRACKET - RH		A.	
-11-15	" " " " - LH			





# DRAWING SCHEDULE

ASSEMBLY TITLE

16 ENGINE & TRANSMISSION

ISSUE NO

DET. NO	DESCRIPTION	ISSUE	SIZE	ORIG. NO
742-16-01	ENGINE MTC. PAD. L.H. LOWER		A	
-11-02	" " " R.H. LOWER			
-11-03	" " " R.H. UPPER			
-11-04				
-11-05				
-11-06				
07	BMW Dowel	4-15-1	A	<del>SKETCH</del>
08	SUPPORT BAR (USED IN CAR IF NO ENGINE)		N/D	
09	EXT FLANGES F2 PINTO		C	
10	OUTLET FLANGE		SKETCH	

**march**

ENGINEERING LTD.

SHEETS

# DRAWING SCHEDULE

ASSEMBLY TITLE

17 MISCELLANEOUS

LOGS NO

DETAILED NO	DESCRIPTION	ISSUE SIZE	SIZE	DETAILED NO
742-17-01	BOSS - TAIL SUPPORT.		-	708-16-03
-17-02	1/8" BSP FITTING.		B	732-14-04
-17-03	3/8" BSP "		B	732-14-04
-17-04	1/2 " "		B	732-14-04
-17-05	3/4 " "		B	732-14-04
-17-06	-4 AERQUIP FITTING.		B	741-15-20
-17-07	-6 " "	4-8-2	B	741-15-20
-17-08	PIPE COUPLING SLEEVE.		A	
-17-09	CAR BODY SUPPORT (CHASSIS TROLLEY)		D	
-17-10	ANCHOR NUT		A	

## march

ENGINEERING LTD.

SHEETS.



# DRAWING SCHEDULE

ASSEMBLY TITLE

28

ELECTRICS

SET NO

DRG. NO	DESCRIPTION	ISSUE	SIZE	ORIG. NO
742-28-01	ELEC. IGNITION BOX	1	C	SHEET 1
-28-01	LUCAS & BOSCH WIRING DIAGRAMS	1	C	SHEET 2
28-02	IGNITION BOX MFG. PLATE	1	C	
28-03	" " RET. BRKT.	1	A	
-11-04	ELECTRICS BOX - LUCAS / BOSCH	1	C	
-11-05	" " LID.	1	B	
	<del>REVISION</del>	<del>1</del>	<del>B</del>	

SHEET SHEETS

**March**

ENGINEERING LTD.