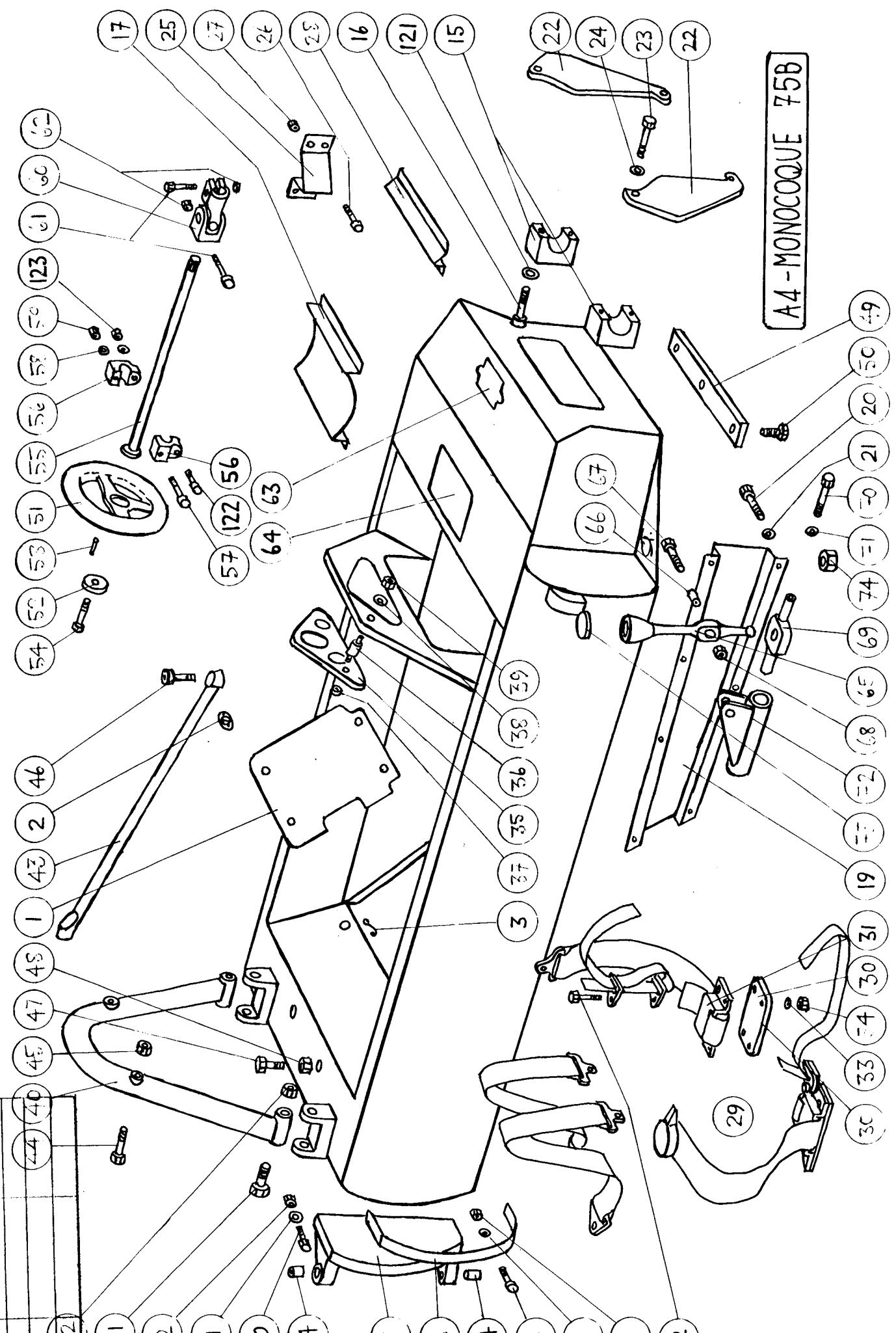
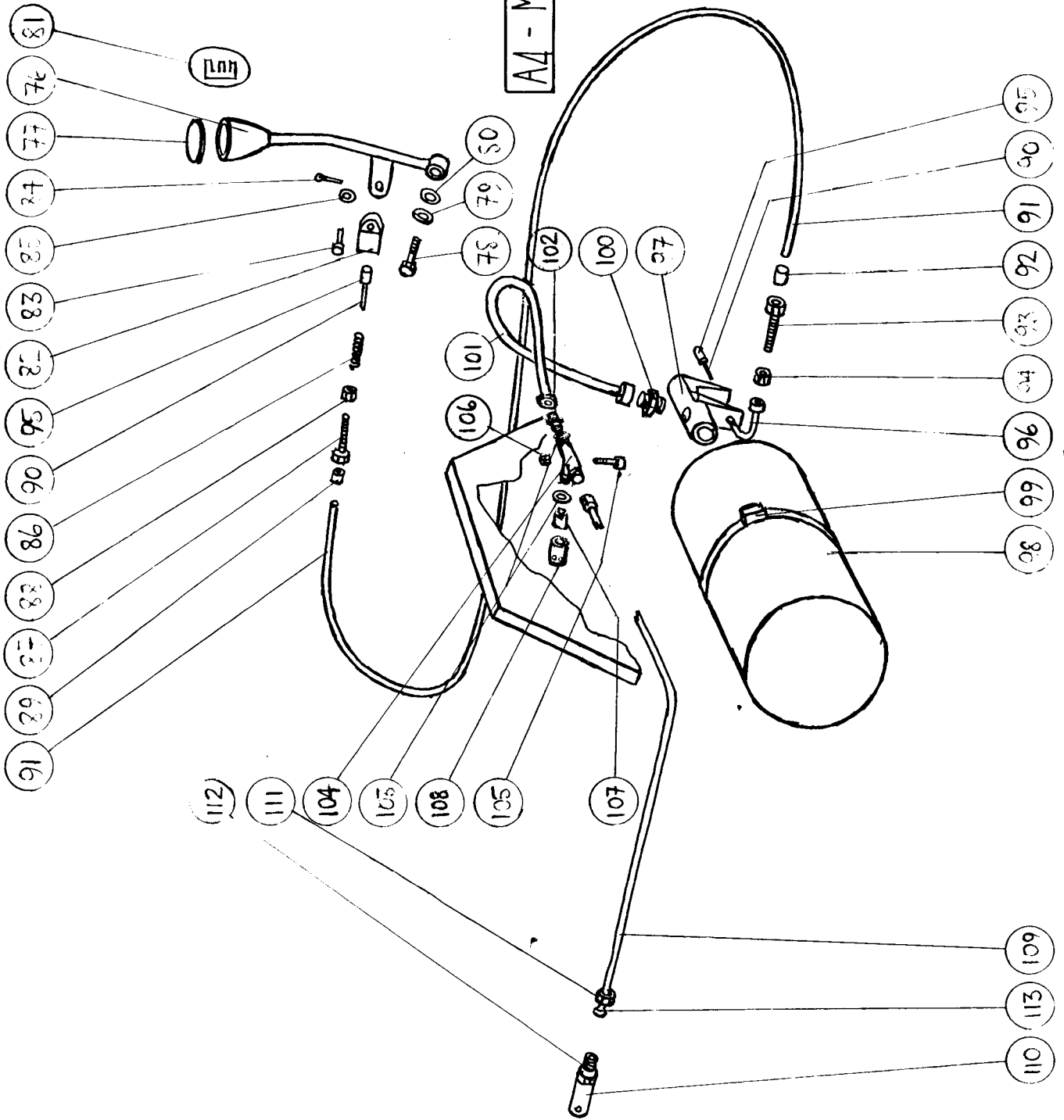


SIGNATURE	DATE
<i>[Signature]</i>	10-2-75



A4-MONOCOQUE 75B

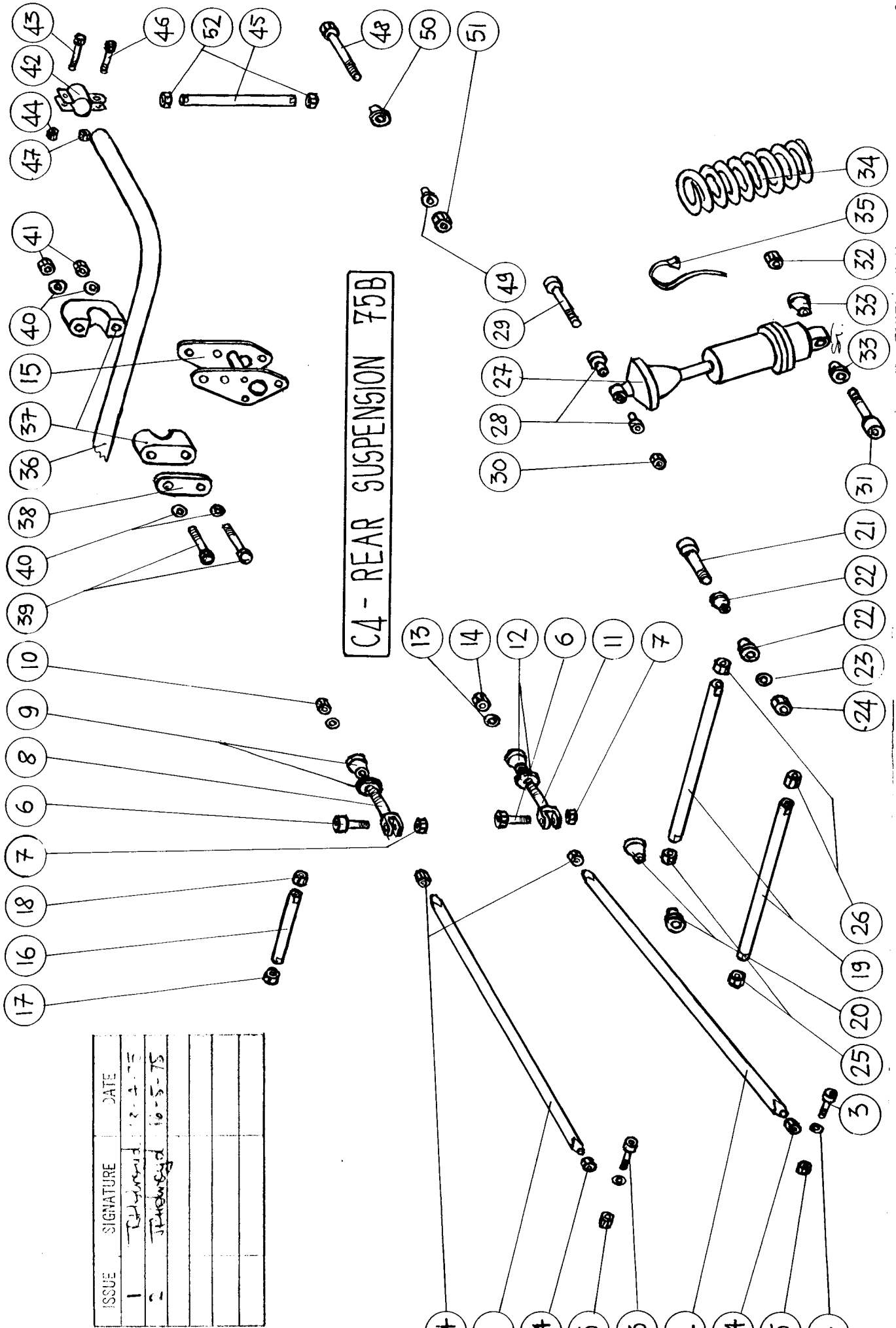


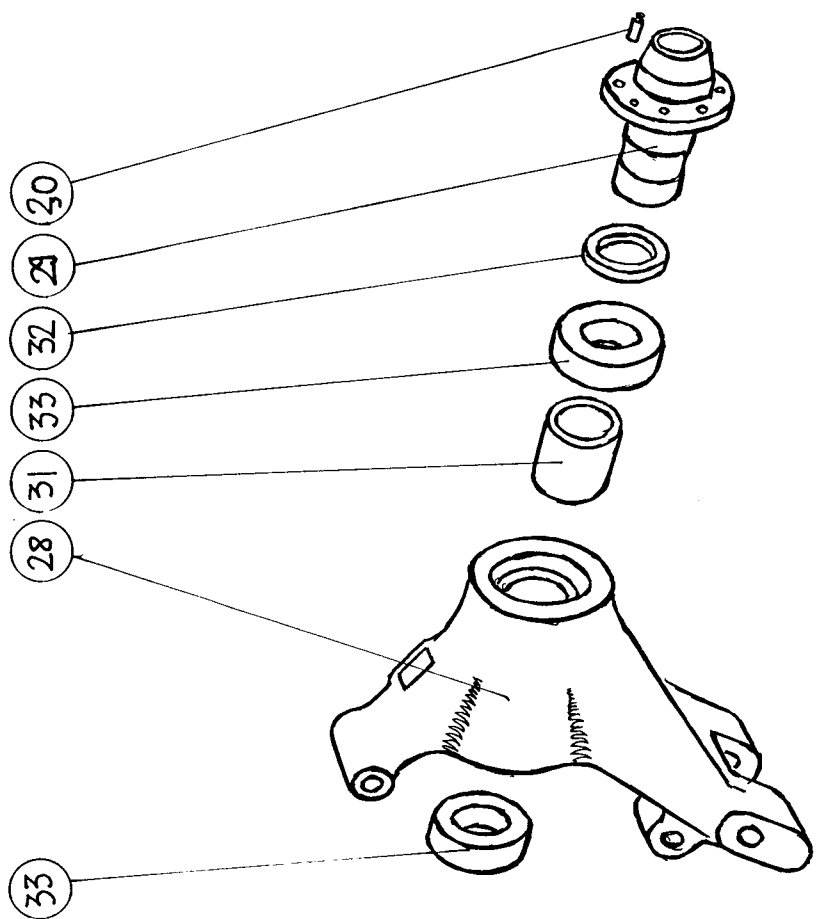
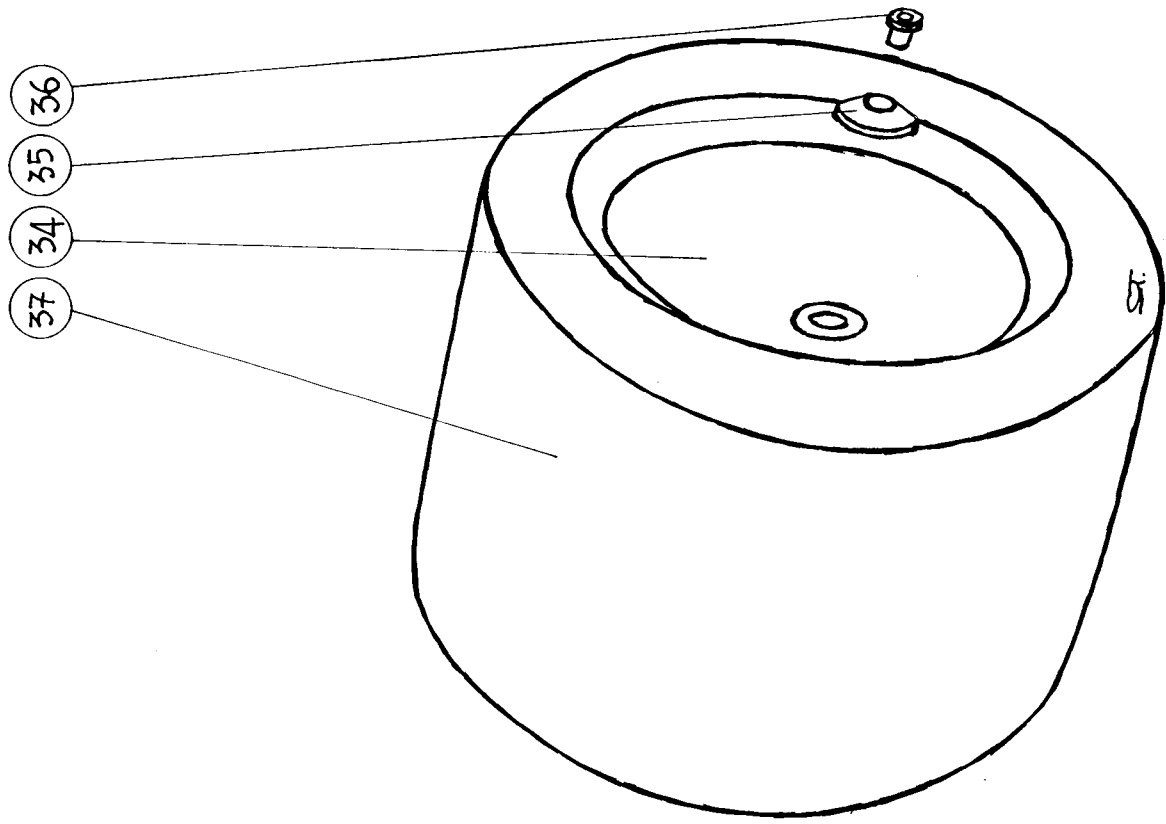
A4 - MONOCOQUE 75 B

ISSUE	SIGNATURE	DATE
1	T. H. H. H.	12-5-75
2	T. H. H. H.	16-5-75

ISSUE	SIGNATURE	DATE
1	J. J. [Signature]	12-1-75
2	J. J. [Signature]	10-5-75

C4 - REAR SUSPENSION 75B



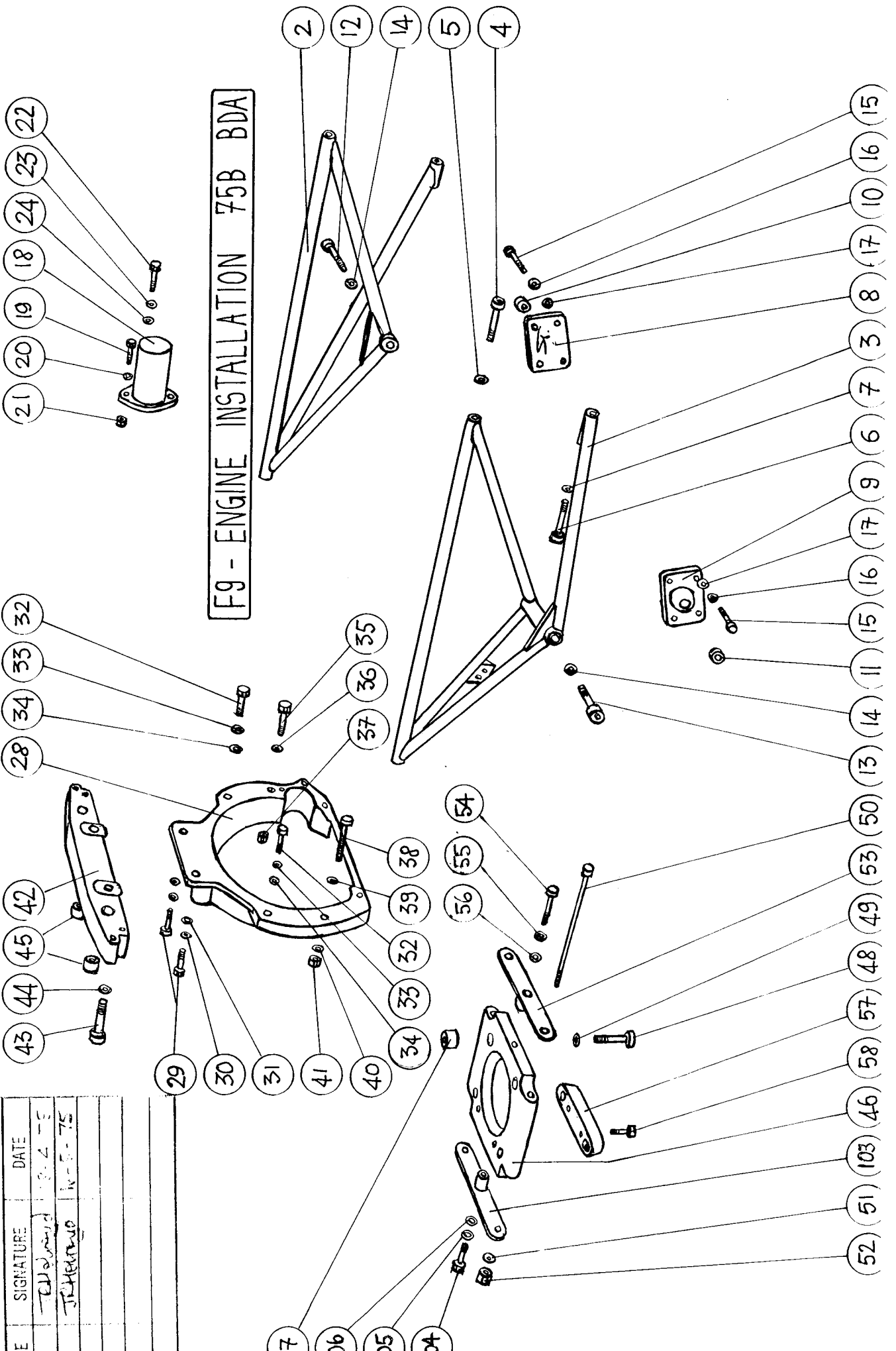


D4 - REAR UPRIGHT 75B

ISSUE	SIGNATURE	DATE
1	T. H. E. T. D.	18 4 75

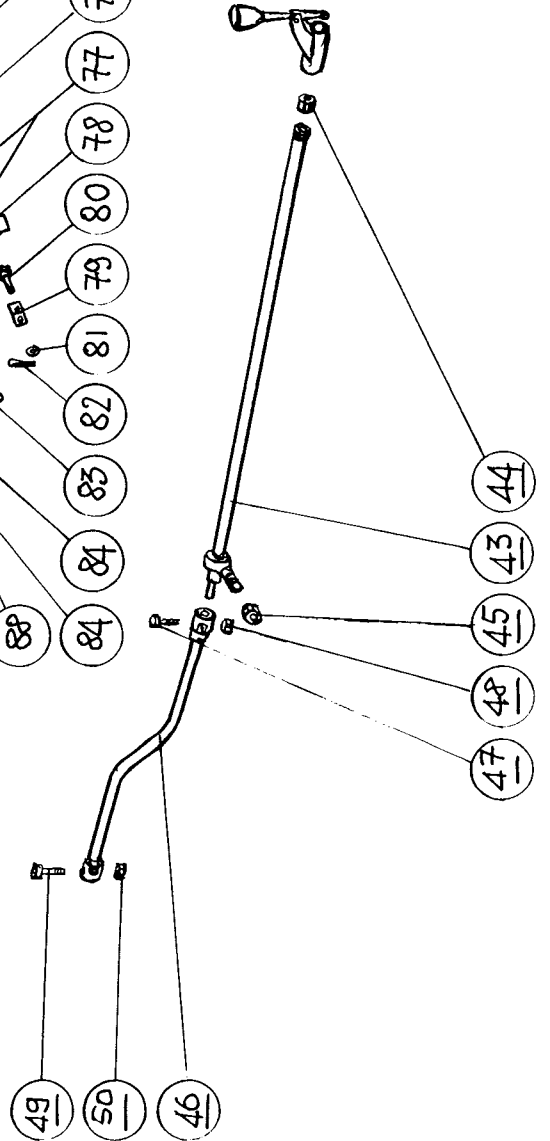
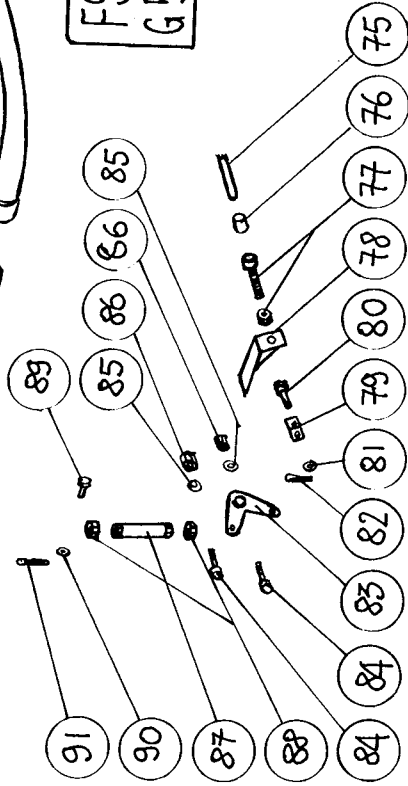
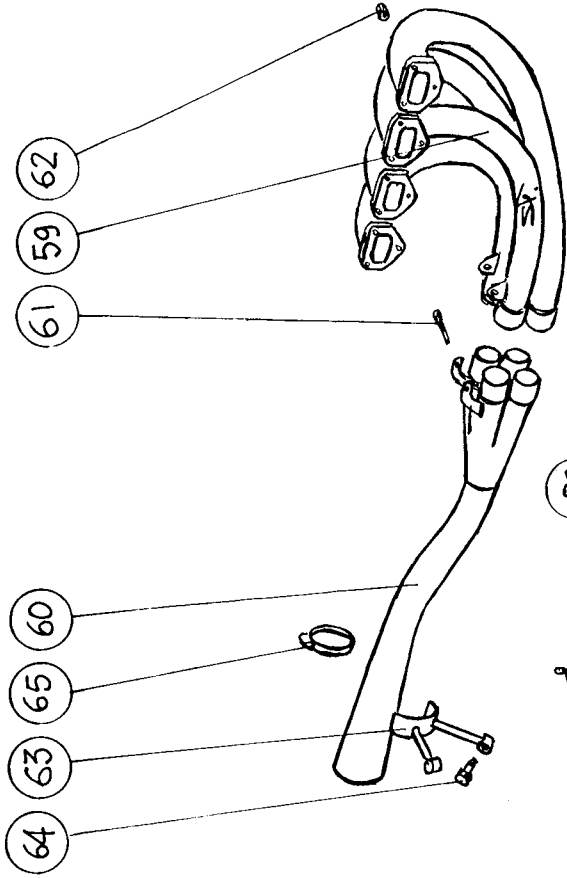
E	SIGNATURE	DATE
	<i>[Signature]</i>	10-2-75
	<i>[Signature]</i>	10-5-75

F9 - ENGINE INSTALLATION 75B BDA

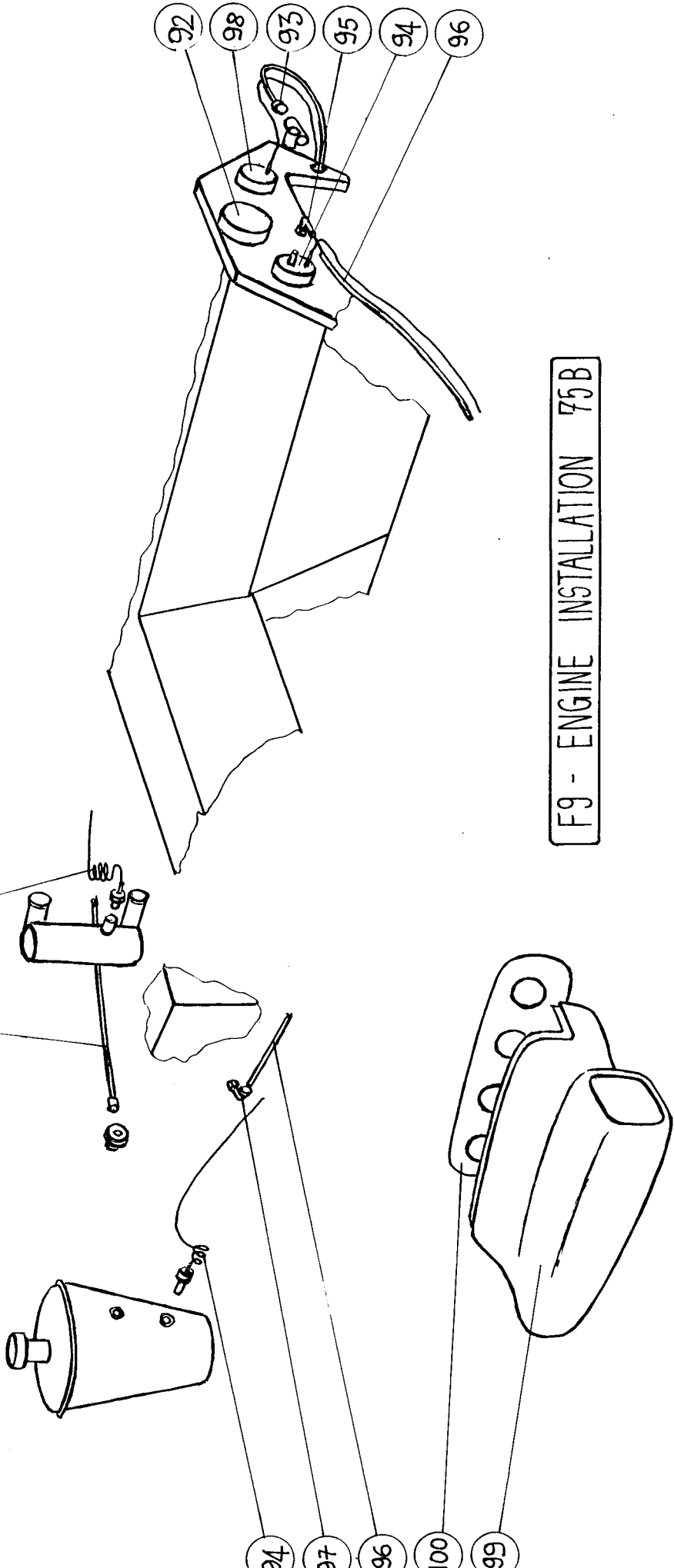


ISSUE	SIGNATURE	DATE
1	JRH	15-4-75
2	JRH	16-5-75

F9 - ENGINE INSTALLATION 75B BDA
 G5 - TRANSMISSION 75B

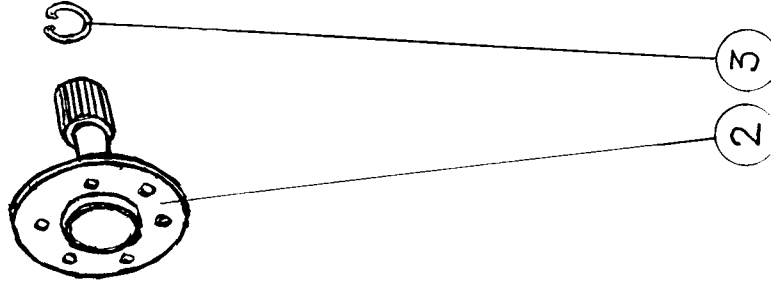
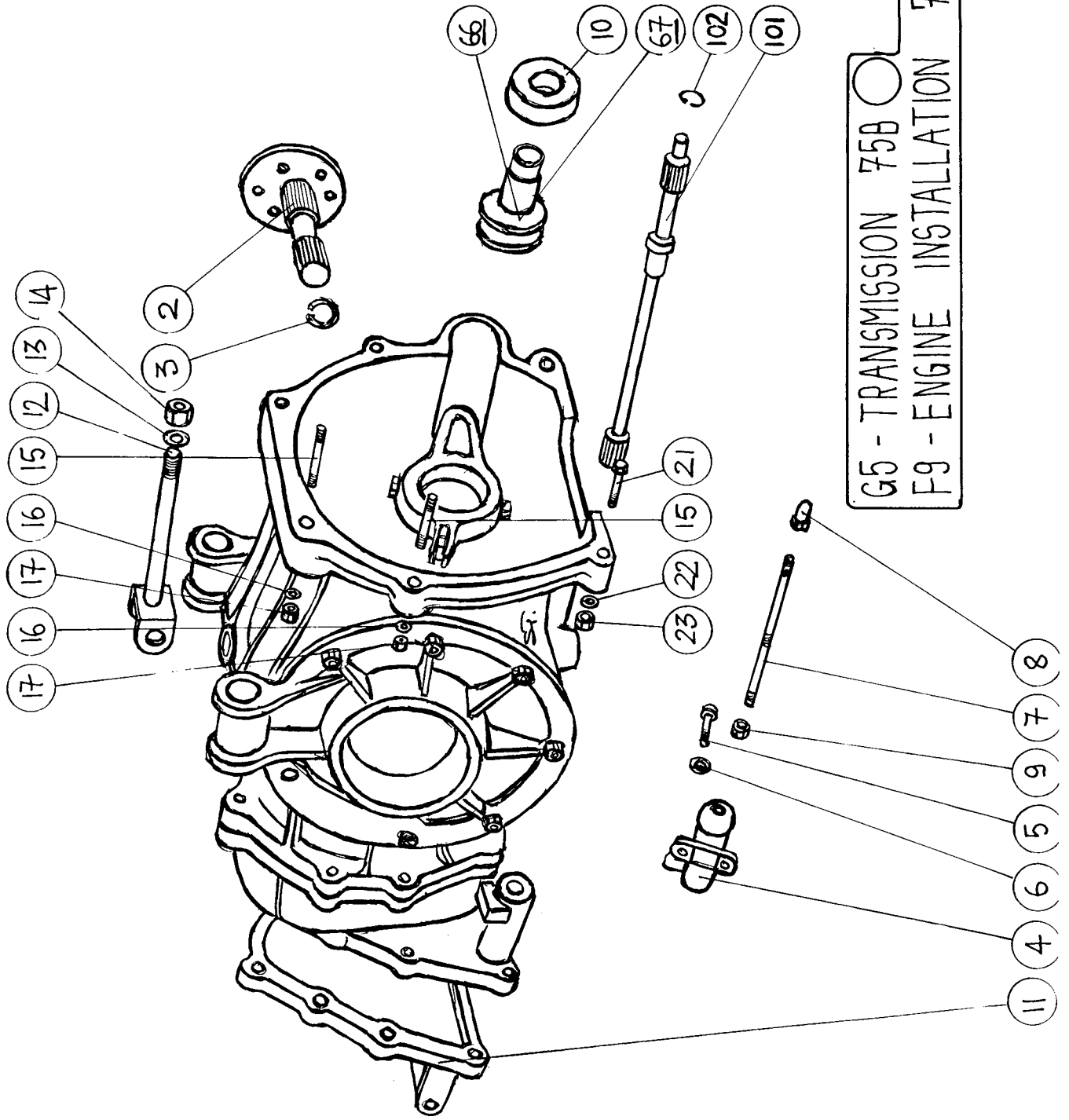


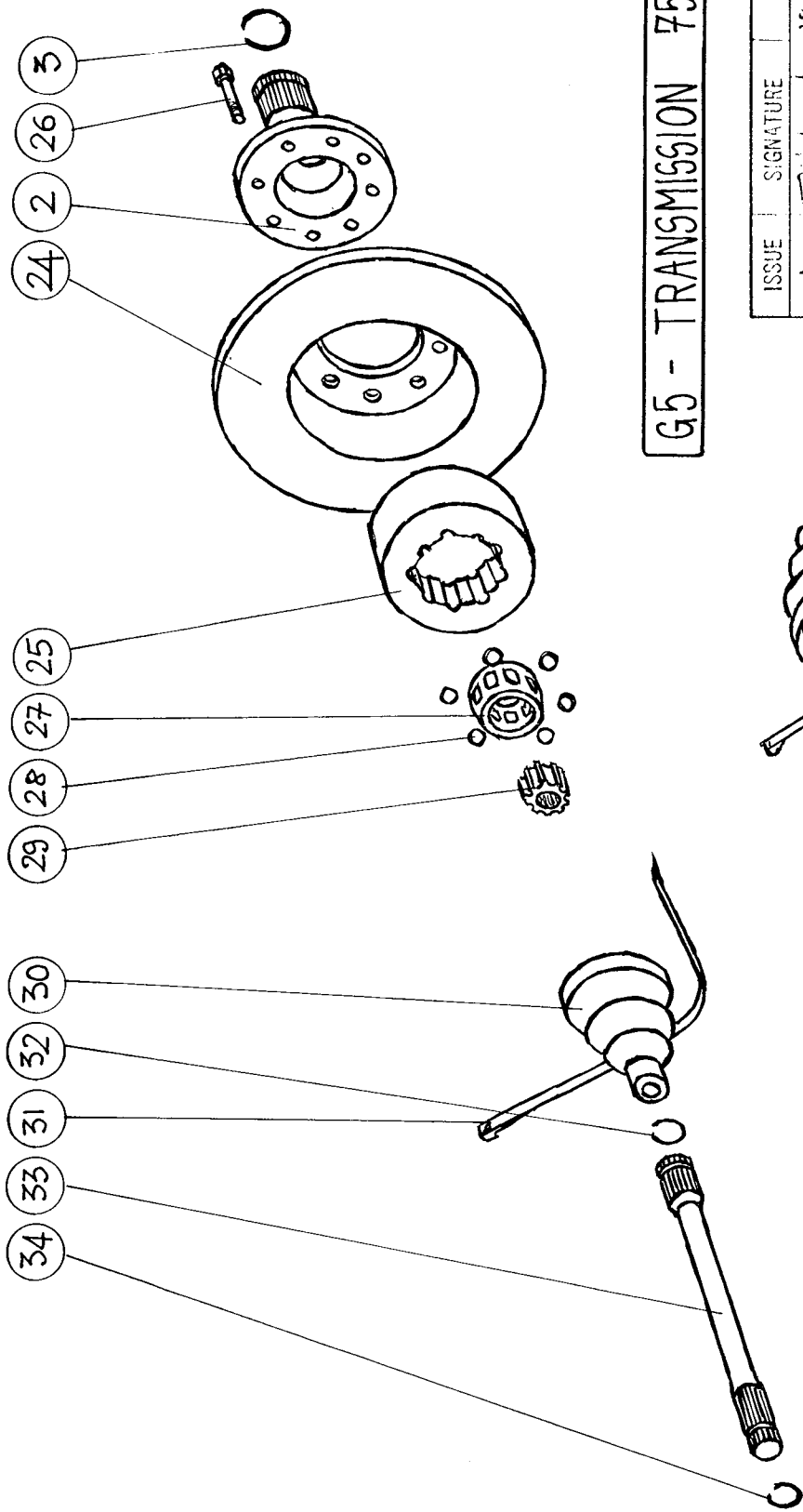
ISSUE	SIGNATURE	DATE
1	T. J. Edwards	18-4-75



F9 - ENGINE INSTALLATION 75B

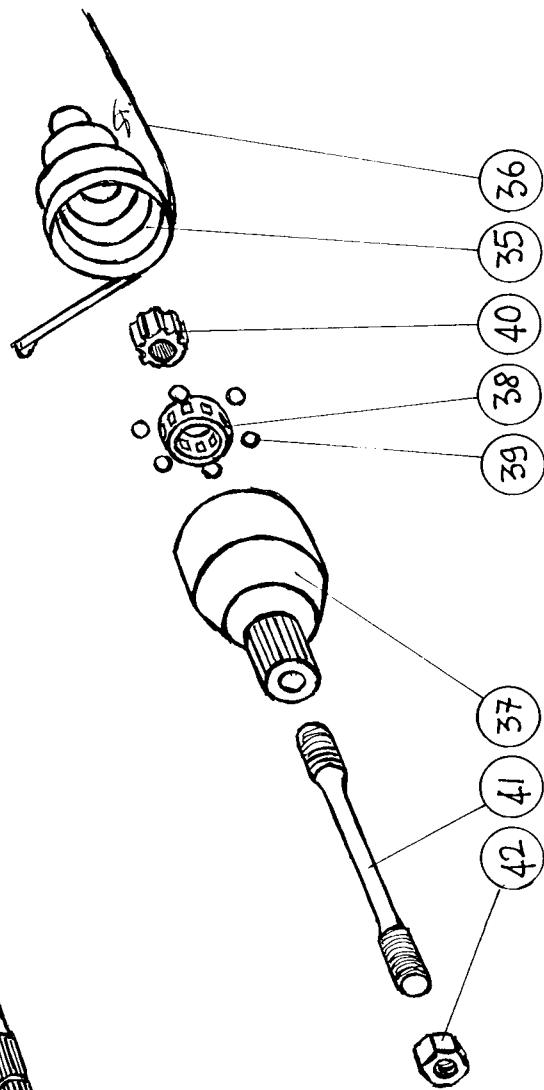
ISSUE	SIGNATURE	DATE
1	<i>[Handwritten Signature]</i>	10 2 75

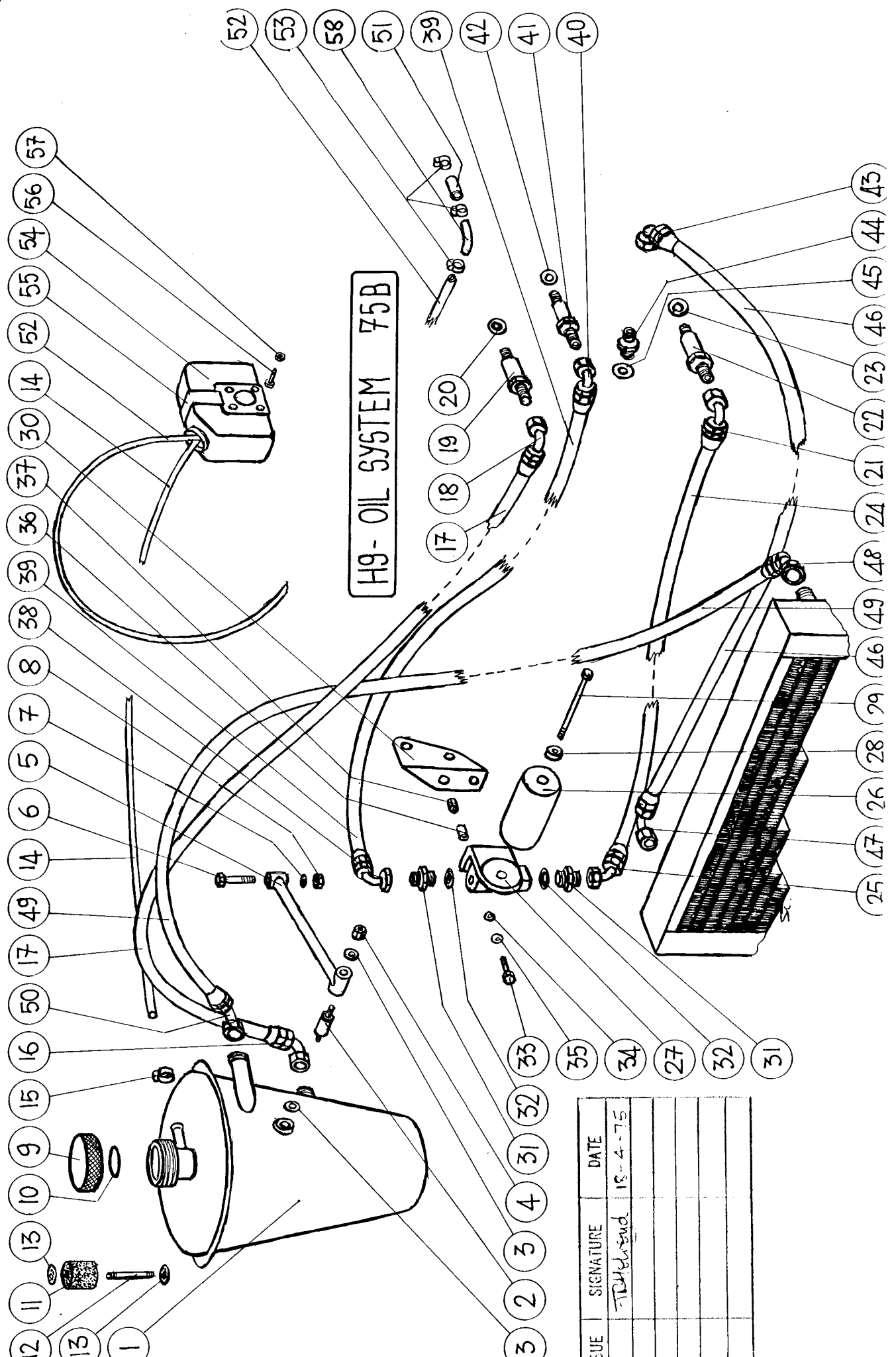




G5 - TRANSMISSION 75B

ISSUE	SIGNATURE	DATE
1	Trayketynd	18.4.75



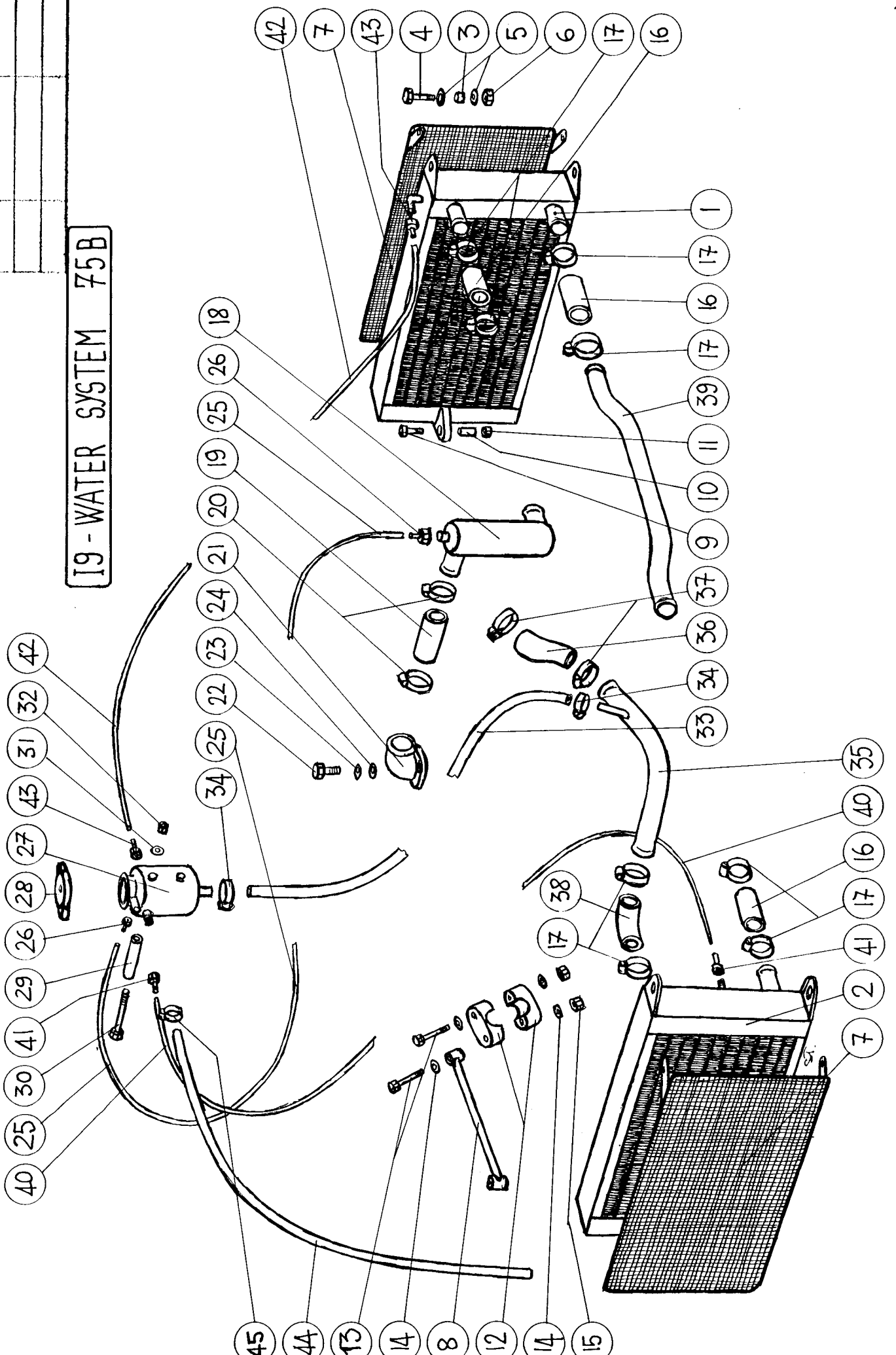


H9-OIL SYSTEM 75B

ISSUE	SIGNATURE	DATE
1	T. H. [Signature]	18-4-75

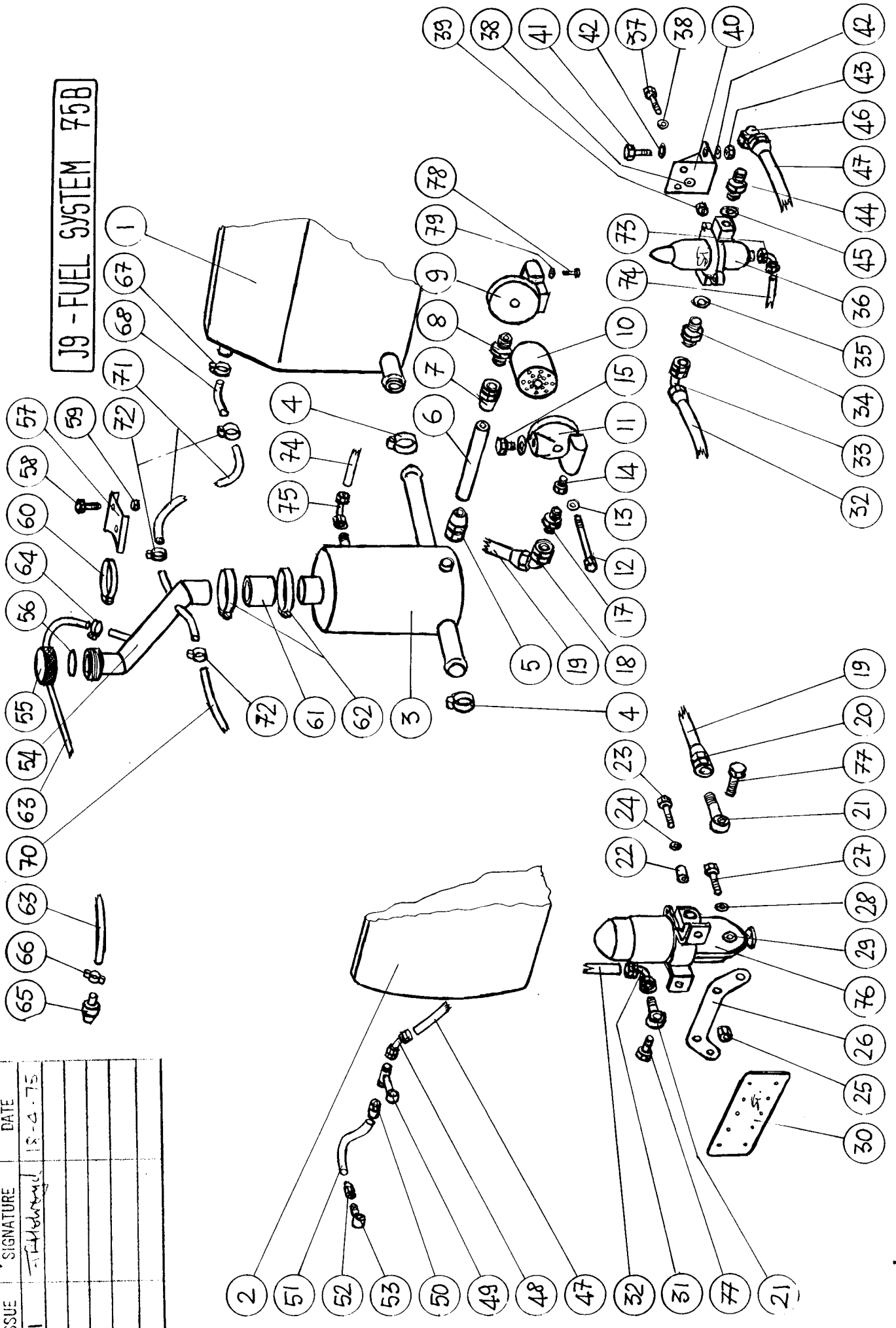
ISSUE	SIGNATURE	DATE
1	J. B. [Signature]	18-4-75

I9 - WATER SYSTEM 75B

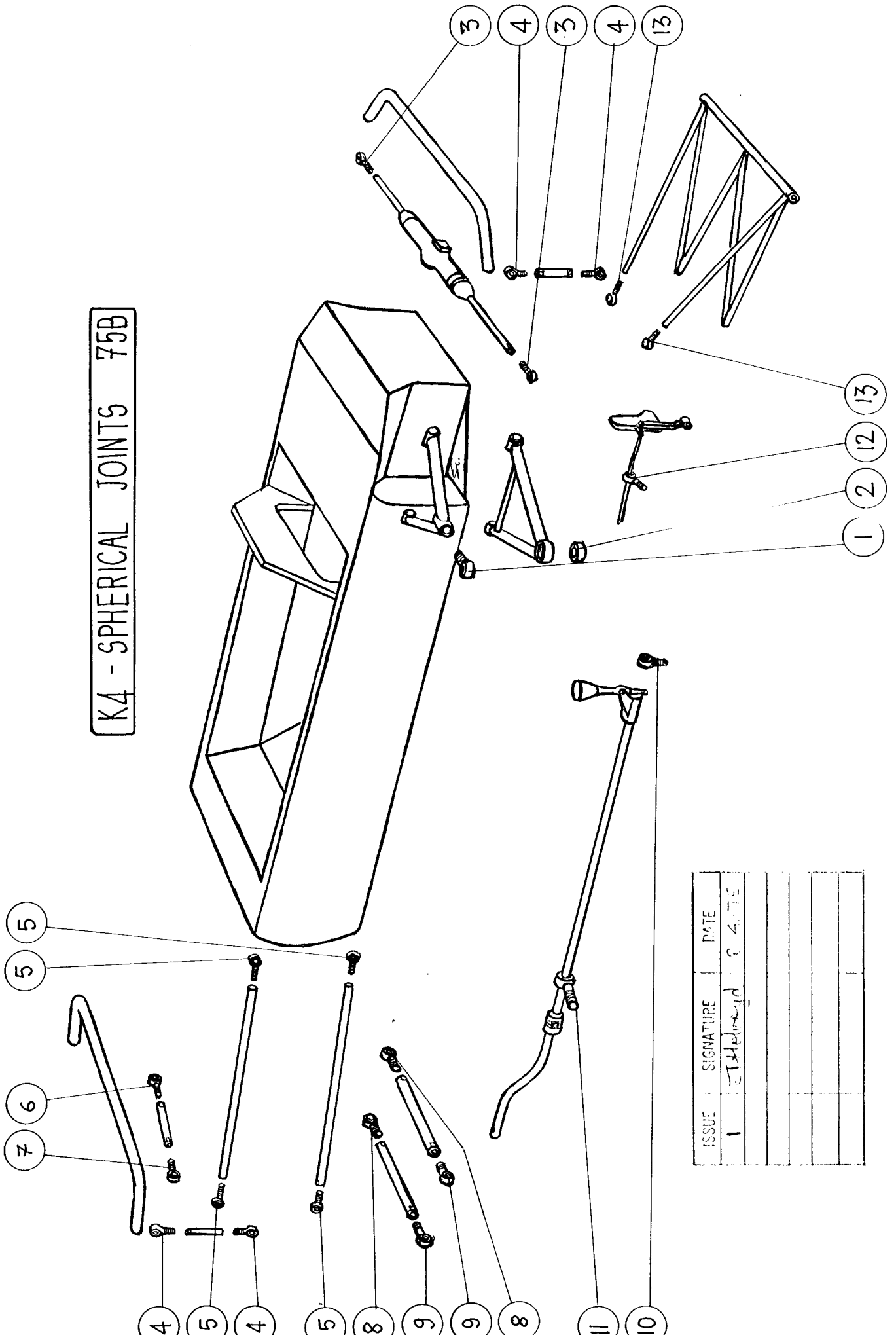


J9 - FUEL SYSTEM 75B

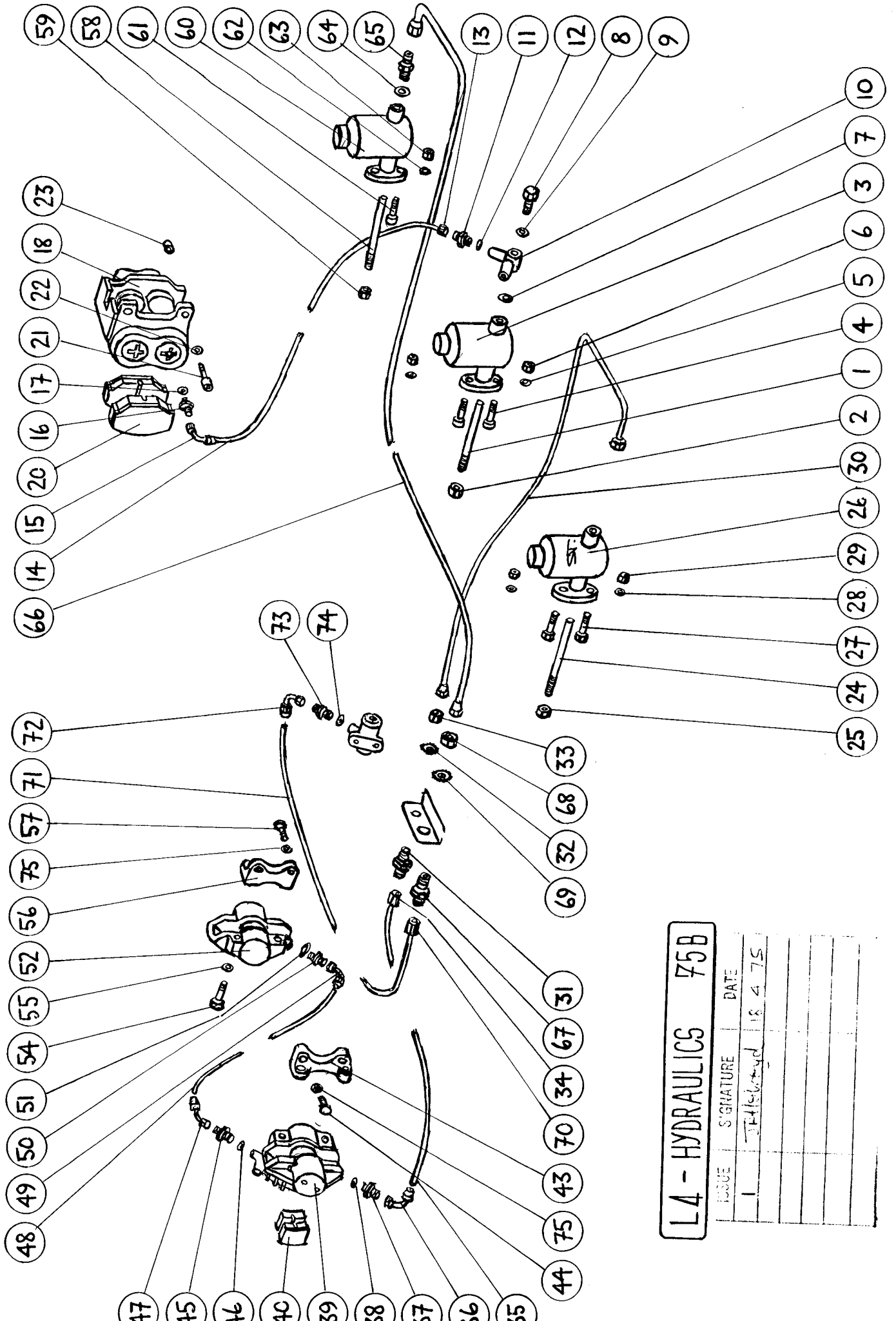
ISSUE	SIGNATURE	DATE
1	<i>[Signature]</i>	18-8-75



K4 - SPHERICAL JOINTS 75B

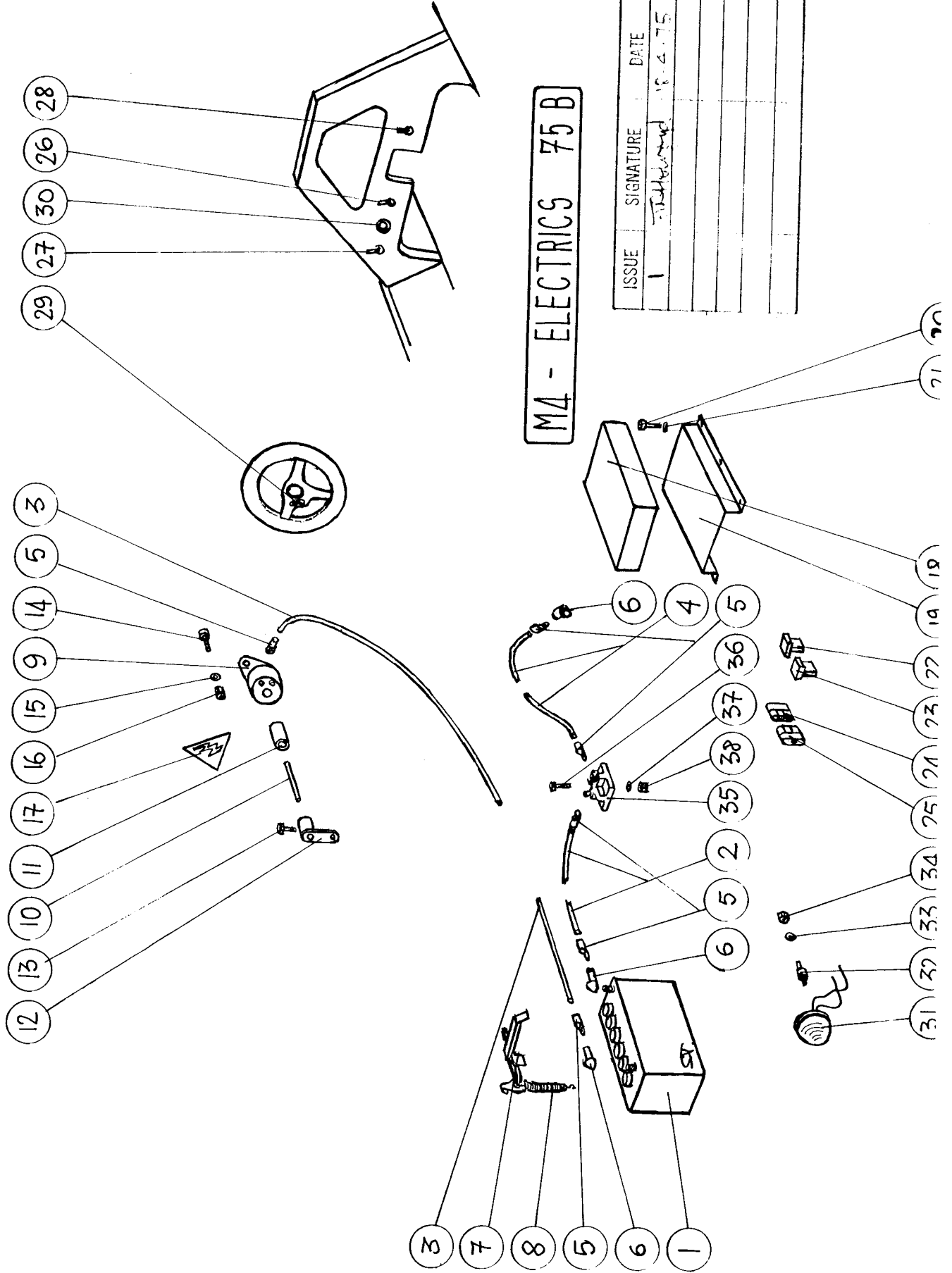


ISSUE	SIGNATURE	DATE
1	ETHEL...	8-4-74



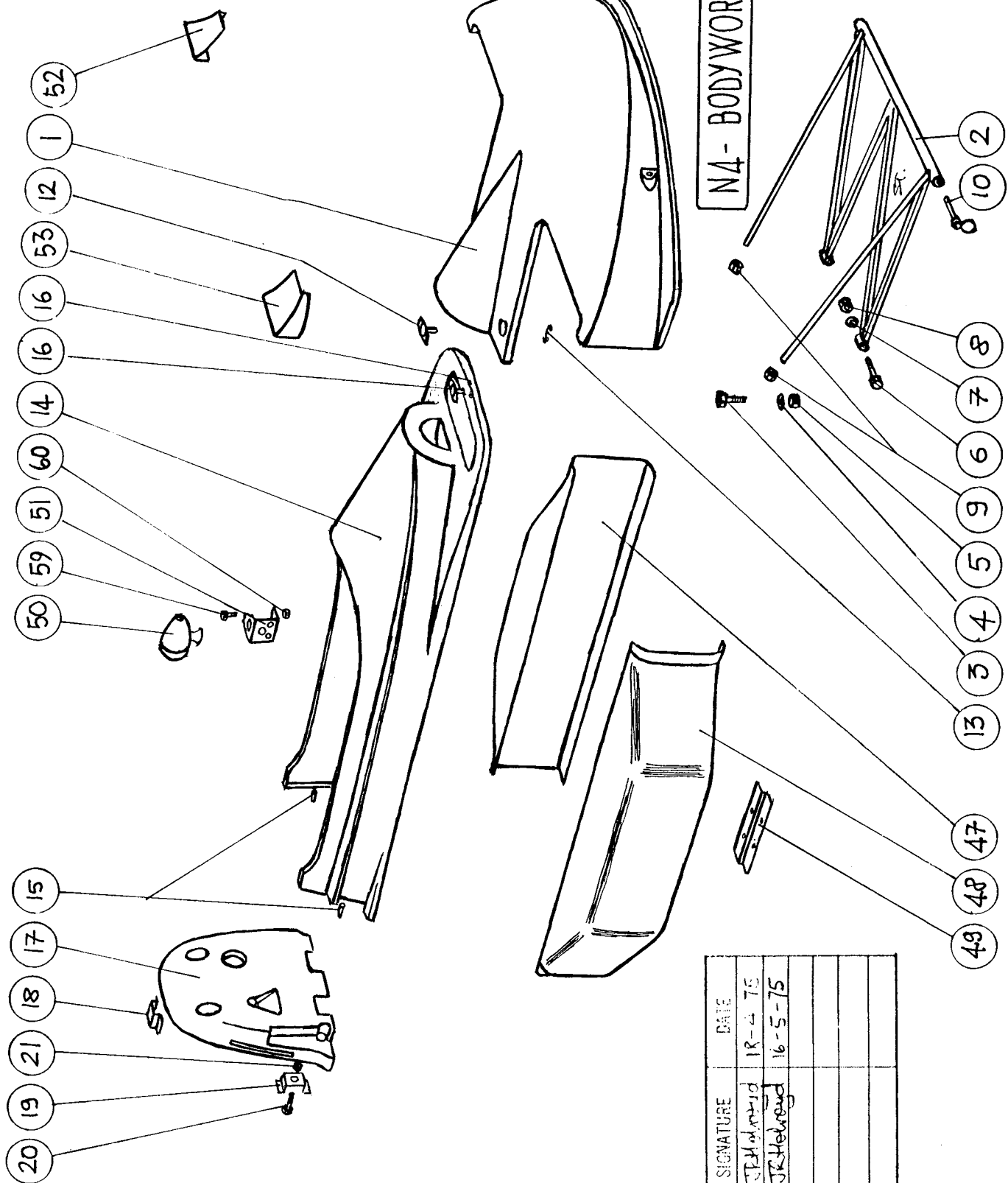
L4 - HYDRAULICS 75B

ISSUE	SIGNATURE	DATE
1	W. H. H. H.	18 4 75



M4 - ELECTRICS 75 B

ISSUE	SIGNATURE	DATE
1	<i>[Signature]</i>	18.4.75



N4- BODYWORK, WINGS, ETC. 75B

E	SIGNATURE	DATE
	JRHeldred	18-4-75
	JRHeldred	16-5-75

- 20
- 19
- 21
- 18
- 17
- 15

- 50

- 59

- 60

- 14

- 16

- 16

- 53

- 12

- 1

- 52

- 2

- 10

- 8

- 7

- 8

- 6

- 9

- 5

- 4

- 3

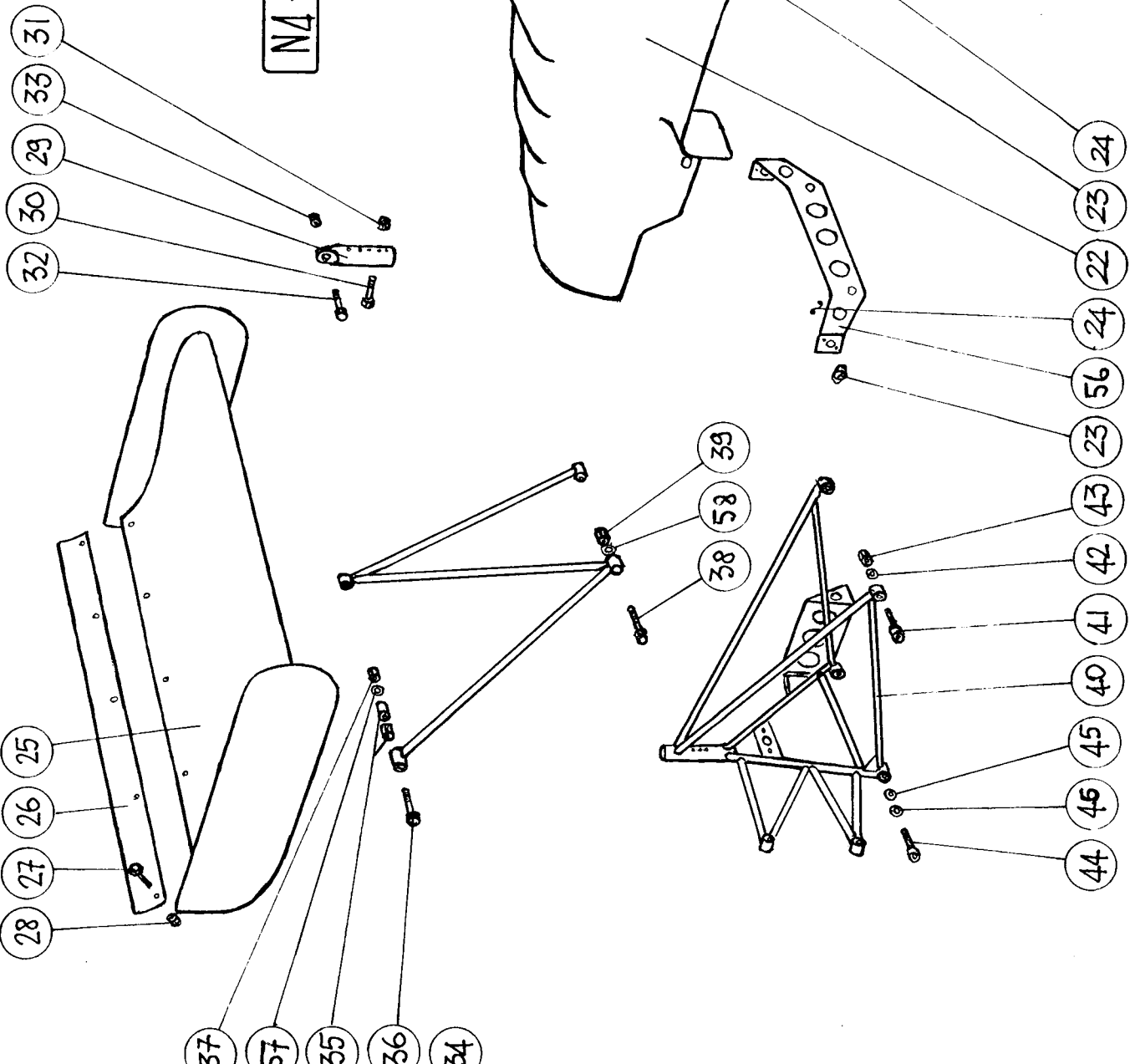
- 13

- 47

- 48

- 49

N4 - BODYWORK, WINGS, ETC. 75B



ISSUE	SIGNATURE	DATE
1	JR [Signature]	18-4-75

FRONT SUSPENSION - 75B

ISSUE	SIGNATURE	DATE
1	J. H. Heyd	18-4-75

SHEET 1 OF 2

SECTION B4

Item	Ref. No.	Matrix	No. Off	Detail
1 FRONT TOP WISHBONE	752-02-03	1-3-1	2	
2 FRONT BOTTOM WISHBONE LH	752-02-01	1-3-3	1	
3 " " " RH	752-02-02	1-3-4	1	
4 FORWARD FRONT SUSPENSION STRUT	753-01-10	1-4-1	2	
5 " " " " BOLT	TD 231	12-5-4	2	($\frac{3}{8}$ " UNF x $1\frac{1}{2}$ " HEX)
6 " " " " PLAIN WASHER	TD 324	20-1-8	2	($\frac{3}{8}$ " T&C)
7 " " " " NYLOC NUT	TD 380	13-3-3	2	($\frac{3}{8}$ " UNF FULL)
8 REARWARD FRONT SUSPENSION STRUT LH	732-01-29	1-1-7	1	
9 " " " " RH	732-01-28	1-1-8	1	
10 " " " " BOLT	TD 232	12-5-5	2	($\frac{3}{8}$ " UNF x $1\frac{3}{4}$ " CH)
11 " " " " SPRING WASHER	TD 336	20-1-13	2	($\frac{3}{8}$ " SQ. SEC)
12 FTWB SPACER	732-02-04	4-2-11	2	
13 FBWB SPACER	732-02-06	4-2-10	2	
14 FTWB THROUGH BOLT	72G-02-07	4-9-2	2	
15 " " " PLAIN WASHER	TD 324	20-1-8	2	($\frac{3}{8}$ " T&C)
16 " " " NYLOC NUT	TD 380	13-3-3	2	($\frac{3}{8}$ " UNF FULL)
17 FBWB THROUGH BOLT	722-02-12	4-5-6	2	
18 " " " PLAIN WASHER	TD 324	20-1-8	2	($\frac{3}{8}$ " T&C)
19 FWB BEARING JOURNAL	732-02-07	4-2-5	8	
20 FTWB INNER BRG BUSH (DELTRIN)	72G-02-08	4-6-12	8	
21 FBWB INNER BRG BUSH (DELTRIN)	722-02-07	4-5-8	4	
22 THRUST WASHER	722-02-08	4-2-6	12	
23 FTWB SLEEVE NUT	703-03-05	4-2-9	2	
24 FTWB OUTER ROSE JOINT LOCKNUT	TD 390	13-4-11	2	($\frac{3}{8}$ " UNF HALF)
25 FBWB " " " CIRCLIP	TD 119	8.2.8	2	
26 FRONT DAMPER	TD 197	16-1-9	2	(1180B KONI)
27 " " INSERT	712-02-09	4-2-12	8	
28 " " TOP BOLT	TD 238	12-5-12	2	($\frac{3}{8}$ " UNF x $3\frac{1}{2}$ " CH)
29 " " TOP NYLOC NUT	TD 373	13-3-9	2	($\frac{3}{8}$ " UNF HALF)
30 " " BOTTOM BOLT	TD 233	12-5-6	2	($\frac{3}{8}$ " UNF X 2" CH)
31 " " BOTTOM NYLOC NUT	TD 373	13-3-9	2	($\frac{3}{8}$ " UNF HALF)
32 FRONT SPRING	TD 460	16-1-3	2	(7" x 250 lbs)
33 TYRAP - LARGE	TD 195	8-3-15	1	
34 LONG STEERING RACK ASSEMBLY	712-04-17	4-6-9	1	
35 RENAULT JOINT ASSEMBLY	TD 158	15-1-5	2	
36 " " SPLIT PIN	TD 43	22-1-12	2	(1 - 13")

FRONT SUSPENSION - 75B

SHEET 2 OF 2

SECTION B4

ISSUE	SIGNATURE	DATE
1	JRHeweyd	18-4-75
2	JRHeweyd	16-5-75.

	Item	Ref. No.	Matrix	No. Off	Detail
② 37	TRACK ROD	75B-04-01	3-16-10	2	(11.20" LENGTH)
38	RACK ROD INNER LOCK NUT	714-04-14	4-5-7	2	(12mm x 1.5 mm)
39	" " OUTER LOCK NUT	TD 387	13-4-8	2	($\frac{3}{8}$ " UNF HALF)
40	STEERING ARM PLATE	703-04-15	2-1-3	4	
41	" " " SPACER	75B-01-12	4-15-7	4	($\frac{3}{16}$ " LENGTH)
42	" " " BOLT	TD 207	12-3-5	4	($\frac{1}{4}$ " UNF x 2"CH)
43	" " " NYLOC NUT	TD 378	13-3-1	4	($\frac{1}{4}$ " UNF FULL)
44	" " " BOLT	TD 221	12-4-8	2	($\frac{5}{16}$ " UNF x 2 $\frac{1}{4}$ "CH)
45	" " " PLAIN WASHER	TD 323	20-1-7	8	($\frac{5}{16}$ " T&C)
46	" " " NYLOC NUT	TD 379	13-3-2	2	($\frac{5}{16}$ " UNF FULL)
47	BUMPSTEER SPACER - THICK	75R-04-02	4-13-5	2	($\frac{3}{8}$ " LENGTH)
48	" " - THIN	712-04-11	4-15-6	2	($\frac{3}{16}$ " LENGTH)
49	FRONT ANTI ROLL BAR	752-05-01	2-1-8	1	(1" DIA x 14g)
50	FARB MOUNTING	732-05-05	4-2-2	4	(1" ID)
51	" " SPACER	752-01-26	4-11-6	2	(0.25" THICK)
52	" " BOLT	TD 208	12-3-6	4	($\frac{1}{4}$ " UNF x 2 $\frac{1}{4}$ " CH)
53	" " PLAIN WASHER	TD 322	20-1-6	8	($\frac{1}{4}$ " T & C)
54	" " NYLOC NUT	TD 378	13-3-1	4	($\frac{1}{4}$ " UNF FULL)
55	FARB CLAMP	72X-05-19	1-2-9	2	(1" ID)
56	" " BOLT			2	($\frac{1}{4}$ " UNF x 1 $\frac{1}{4}$ " CH)
57	" " NYLOC NUT	TD 378	13-3-1	2	($\frac{1}{4}$ " UNF FULL)
58	FARB LINK	732-05-01	1-2-11	2	($\frac{3}{8}$ " LENGTH)
59	" " TOP BOLT			2	($\frac{5}{16}$ " UNF x 1" CH)
60	" " TOP NYLOC NUT	TD 372	13-3-8	2	($\frac{5}{16}$ " UNF HALF)
61	" " BOTTOM BOLT	TD 219	12-4-6	2	($\frac{5}{16}$ " UNF x 1 $\frac{3}{4}$ " CH)
62	" " BOTTOM NYLOC NUT	TD 379	13-3-2	2	($\frac{5}{16}$ " UNF FULL)
63	" " ROSE JOINT LOCK NUT	TD 386	13-4-7	4	($\frac{5}{16}$ " UNF HALF)
64	STEERING RACK SEAL			2	
65	" " SPACER	753-04-06		2	

ISSUE	SIGNATURE	DATE
1	JRHolroyd	18-4-75
2	JRHolroyd	16-5-75

SECTION N4

Item	Ref. No.	Matrix	No. Off	Detail
1 FRONT TOP WISHBONE OUTER	TD 45	15-1-2	2	(RBJ 76 GU)
2 FRONT BOTTOM WISHBONE OUTER	TD 46	15-1-3	2	(RSTWR 12)
3 TRACK ROD OUTER	TD 47	15-1-4	2	(RBJ 341)
4 ANTI-ROLL BAR LINK)	TD 49	15-1-11	8	(RMP5U)
5 RADIUS ARM	TD 51	15-1-13	8	(RC 6H)
6 TOP LINK INNER	TD 52	15-1-14	2	(RC 6E)
7 TOP LINK OUTER	TD 53	15-1-15	2	(RCL 8H)
8 BOTTOM LINK INNER	TD 54	15-2-1	4	(RC 8H)
9 BOTTOM LINK OUTER	TD 53	15-1-15	4	(RCL 8H)
② 10 GEAR LINKAGE FRONT SUPPORT	TD 82	15-2-10	1	(RBJ 343)
11 GEAR LINKAGE REAR SUPPORT	TD 55	15-2-2	1	(RMP8U)
12 THROTTLE CABLE FRONT SUPPORT	TD 17	15-1-1	1	(RMP4U)
13 NOSE FRAME	TD 49	15-1-11	2	(RMP5U)

ISSUE	SIGNATURE	DATE
1	JPHolroyd	18-4-75

SECTION D4

Item	Ref. No.	Matrix	No. Off	Detail
FRONT UPRIGHT ASSEMBLY LH			1	
COMPRISES:				
1 TOP NYLOC NUT	TD 375	13-3-11	1	($\frac{1}{2}$ " UNF HALF)
2 TOP PLAIN WASHER	TD 326	20-1-10	1	($\frac{1}{2}$ " T&C)
3 TOP WASHER	752-02-07	4-17-3	1	
4 FRONT UPRIGHT WASHER - SMALL	712-03-20	4-2-15	1	
5 " " " - LARGE	703-03-20	4-15-10	1	
6 TOP BOLT	TD 526	12-7-9	1	($\frac{1}{2}$ "UNF x $3\frac{1}{4}$ "CH)
7 FRONT UPRIGHT LH	743-06-01	6-1-1	1	
8 " " HELICOIL	TD 147	22-1-7	2	($\frac{7}{16}$ "UNF x $1\frac{1}{2}$ ID)
9 " " GRUB SCREW	TD 153	12-1-1	1	(2BA x $\frac{1}{2}$ ")
10 FRONT WHEEL STUD ASSEMBLY	753-06-01	3-8-8	1	
11 " " " SPIROL PIN	TD 154	8-1-7	2	($\frac{3}{32}$ " x $\frac{3}{4}$ ")
12 " " NUT	TD 16	13-1-1	1	($\frac{3}{4}$ " UNF FULL)
13 FRONT AXLE	711-06-03	4-1-4	1	
14 " " DRIVE PIN	711-07-04	4-1-9	3	
15 " BRAKE DISC	703-06-01	7-1-1	1	
16 " BEARING SPACER	711-06-07	4-1-5	1	
17 " OUTER SPACER	711-07-05	4-1-13	1	
18 " WHEEL BEARING	TD 1	8-1-5	2	
19 BOTTOM PIN	707-06-08	4-1-10	1	
20 FBWB OUTER JOINT INSERT	707-06-09	4-1-3	1	
21 " " " RETAINING WASHER	703-02-21	4-1-2	1	
22 BOTTOM NYLOC NUT	TD 375	13-3-11	1	($\frac{1}{2}$ "UNF HALF)
FRONT UPRIGHT ASSEMBLY RH			1	
23 COMPRISES AS ABOVE BUT FRONT UPRIGHT RH	743-06-02	6-1-2	1	
FRONT WHEEL ASSEMBLY			2	
COMPRISES:				
24 ROAD WHEEL - 10" CAST	703-09-03	19-1-2	1	
25 WHEEL WASHER	712-07-10	4-6-10	1	
26 WHEEL WASHER INSERT	712-07-11	4-6-11	1	
27 FRONT TYRE	TD		1	

ISSUE	SIGNATURE	DATE
1	JR Holway	18-4-75
2	JR Holway	16-5-75.

SECTION D4

Item	Ref. No.	Matrix	No. Off	Detail
REAR UPRIGHT ASSEMBLY			2	
COMPRISES				
28 ** REAR UPRIGHT	722-07-01	6-1-15	1	**
29 " AXLE	722-07-03	4-1-11	1	
30 " " DRIVE PIN	711-07-04	4-1-9	3	
31 " BEARING SPACER	712-07-05	4-1-12	1	
32 " OUTER SPACER	711-07-05	4-1-13	1	
33 " WHEEL BEARING	TD 1	8-1-5	2	
REAR WHEEL ASSEMBLY			2	
COMPRISES				
34 ROAD WHEEL - 14" composite	752-09-03		1	
35 WHEEL WASHER	712-07-10	4-6-10	1	
36 WHEEL WASHER INSERT	712-07-11	4-6-11	1	
37 REAR TYRE	TD		1	
② 38				
** SUBSEQUENTLY:				
REAR UPRIGHT LH	75R-07-01		1	
" " RH	75R-07-02		1	

ISSUE	SIGNATURE	DATE
1	J. H. H. H. H. H.	18-9-75

SECTION M4

	Item	Ref. No.	Matrix	No. Off	Detail
1	BATTERY	TD 124	8-3-11	1	
2	BATTERY LEAD (19" LENGTH)	TD 626	8-5-3	1	(BATTERY TO SOLENOID)
3	" " (60" LENGTH)	TD 626	8-5-3	1	(BATTERY TO MASTER SWITCH)
4	" " (38" LENGTH)	TD 626	8-5-3	1	(SOLENOID TO STARTER MOTOR)
5	BATTERY LEAD TERMINAL			6	
6	" " " RUBBER BOOT		9-3-14	3	
7	BATTERY CLIP	75R-17-03	3-2-12	1	
8	" " SPRING		23-2-1	1	
	MASTER SWITCH ASSEMBLY	75R-28-04		1	
	COMPRISES:				
9	BODY	TD 428	9-1-15	1	
10	SHAFT	75R-28-01	4-12-12	1	
11	NYLON BUSH	75R-28-03	4-12-13	1	
12	LEVER	75R-28-02	1-4-4	1	
13	LEVER BOLT			1	
14	MOUNTING BOLT			2	
15	" WASHER			2	
16	" NYLOC NUT			2	
17	LABEL			1	(RED AND BLUE)
18	SPARK BOX			1	(COSWORTH)
19	" " MOUNTING PLATE	75B-01-17	3-13-11	1	
20	" " " " BOLT			6	
21	" " " PLATE SPRING WASHER			6	
22	" " 5 WAY CONNECTOR-FEMALE		9-3-13	1	(LUCAS)
23	" " " " " -MALE		9-3-12	1	(LUCAS)
24	" " 3 WAY CONNECTOR-FEMALE		9-2-5	1	(LUCAS)
25	" " " " " -MALE		9-2-7	1	(LUCAS)
26	TOGGLE SWITCH - FUEL PUMP	TD 427	9-1-13	1	
27	" " - IGNITION	TD 427	9-1-13	1	
28	" " - CRASH LIGHT	TD 427	9-1-13	1	
29	KILL SWITCH (STEERING WHEEL)	TD 426	9-1-12	1	(NSF)
30	STARTER BUTTON SWITCH	TD 274	9-1-2	1	
31	REAR CRASH LIGHT	TD 275	9-1-5	1	(RED LENS)

ISSUE	SIGNATURE	DATE
1	JR Holweyd	18-4-75

SECTION M4

Item	Ref. No.	Matrix	No. Off	Detail
32 REAR CRASH LIGHT MOUNTING RUBBER			2	
33 " " " SPRING WASHER			2	
34 " " " NYLOC NUT			2	
35 SOLENOID	TD 273	9-1-3	1	
36 " BOLT	TD 529	12-2-14	2	(2BA x 1/2" BH)
37 " WASHER	TD 351	20-2-1	2	(2BA PLAIN)
38 " NYLOC NUT	TD 410		2	(2BA FULL)

KIT LISTS

SECTION F

(ENGINE INSTALLATION KIT)

- ✓ F5 = 753 PINTO NON STOCK
- ✓ F6 = 753 TOYOTA CL
- ✓ F7 = 752 BMW JC
- F8 = 752 BDG JC
- F9 = 752 ALI. HART (50B) 5 JC
- F10 = 75S2BDG JC
- F11 = 751 DFV CL
- ✓ F12 = 75R RENAULT 6 CL
- ✓ F13 = 75S2BMW JC
- ✓ F14 = 75S2NEW HART JC } MW
- F15 = 75B BDA (ATLANTIC-CARBS) JC
- F16 = 753 BMW

ENGINE INSTALLATION KIT - 75B

ISSUE	SIGNATURE	DATE
1	JRHolroyd	18-4-75
2	JRHolroyd	16-5-75

SHEET 1 OF 4

SECTION F9

Item	Ref. No.	Matrix	No. Off	Detail
1 ENGINE(NORMALLY SUPPLIED BY CUSTOMER)			1	(FORD BDA)
2 ENGINE SIDEFAME LH	75B-01-05	1-4-15	1	
3 " " RH	73B-01-02	1-1-11	1	
② 4 " " FORWARD TOP MOUNTING BOLT	TD 526	12-7-9	2	($\frac{1}{2}$ " UNFx $3\frac{1}{2}$ " CH)
5 " " " TOP MOUNTING SPRING WASHER	TD 338	20-1-15	2	($\frac{1}{2}$ " SQ. SEC.)
6 " " " BOTTOM MOUNTING BOLT	TD 525	12-7-10	2	($\frac{1}{2}$ " UNF x 4" CH)
7 " " " " MOUNTING SPRING WASHER	TD 338	20-1-15	2	($\frac{1}{2}$ " SQ. SEC.)
8 ENGINE MOUNTING PAD LH	75B-16-04	4-15-4	1	
9 " " " RH	712-16-02	5-2-5	1	
10 " " " SIDEFAME SPACER LH	702-16-03	4-20-13	1	
11 " " " SIDEFAME SPACER RH	75B-01-21	4-21-1	1	
12 " " " SIDEFAME BOLT	TD 255	12-7-3	1	($\frac{1}{2}$ " UNFx $1\frac{1}{2}$ " CH)
13 " " " " "	TD 257	12-7-6	1	($\frac{1}{2}$ " UNFx $2\frac{1}{4}$ " CH)
14 " " " " SPRING WASHER	TD 338	20-1-15	2	($\frac{1}{2}$ " SQ. SEC.)
15 " " "ENGINE BOLT	TD 655	12-15-15	8	($\frac{5}{16}$ " UNCx $1\frac{1}{2}$ " HH)
16 " " "ENGINE SPRING WASHER	TD 335	20-1-12	8	($\frac{5}{16}$ " SQ. SEC.)
17 " " "ENGINE WASHER	TD 323	20-1-7	8	($\frac{5}{16}$ " T & C)
18 ENGINE STARTER MOTOR	TD 272	9-1-9	1	(LUCAS M35K)
19 " " " MOUNTING BOLT	TD 588		1	($\frac{3}{8}$ " UNFx $2\frac{1}{4}$ " HH)
20 " " " " WASHER	TD 324	20-1-8	2	($\frac{3}{8}$ " T & C)
21 " " " "NYLOC NUT	TD 380	13-3-3	1	($\frac{3}{8}$ " UNF FULL)
22 " " " "BOLT	TD 584	12-13-2	1	($\frac{3}{8}$ " UNFx $1\frac{1}{4}$ " HH)
23 " " " "SPRING WASHER	TD 336	20-1-13	1	($\frac{3}{8}$ " SQ. SEC.)
24 " " " "WASHER	TD 324	20-1-8	1	($\frac{3}{8}$ " T & C)
25)
26				
27				
28 ENGINE ADAPTOR PLATE	712-16-14	6-2-1	1	
29 " " " BOLT	TD 667	12-16-4	2	($\frac{3}{8}$ " UNCx $1\frac{1}{2}$ " HH)
30 " " " SPRING WASHER	TD 336	20-1-13	2	($\frac{3}{8}$ " SQ. SEC.)
31 " " " WASHER				

ENGINE INSTALLATION KIT - 75B

ISSUE	SIGNATURE	DATE
1	JR Howard	18-4-75
2	JR Howard	16-5-75

SHEET 2 OF 4

SECTION F9

Item	Ref. No.	Matrix	No. Off	Detail
32 ENGINE ADAPTOR PLATE BOLT	TD 585	12-13-3	2	($\frac{3}{8}$ "UNFx1 $\frac{1}{2}$ "HH)
33 " " " SPRING WASHER	TD 336	20-1-13	2	($\frac{3}{8}$ "SQ .SEC.)
34 " " " WASHER	TD 324	20-1-8	2	($\frac{3}{8}$ " T & C)
35 " " " BOLT	TD 589	12-13-6	1	($\frac{3}{8}$ "UNFx2 $\frac{1}{2}$ "HH)
36 " " " WASHER	TD 324	20-1-8	2	($\frac{3}{8}$ " T & C)
37 " " " NYLOC NUT	TD 380	13-3-3	1	($\frac{3}{8}$ "UNF FULL)
38 " " " BOLT	TD 591	12-13-8	1	($\frac{3}{8}$ "UNF x 3"HH)
39 " " " SPRING WASHER	TD 336	20-1-13	1	($\frac{3}{8}$ "SQ. SEC.)
40 " " " WASHER	TD 324	20-1-8	2	($\frac{3}{8}$ " T & C)
41 " " " NYLOC NUT	TD 380	13-3-3	1	($\frac{3}{8}$ "UNF FULL)
42 REAR CROSSMEMBER	75B-01-01	5-2-13	1	(CAST TYPE)
43 " " SIDEFRAME BOLT	TD 259	12-7-8	2	($\frac{1}{2}$ "UNFx3"CH)
44 " " "SPRING WASHER	TD 338	20-1-15	2	($\frac{1}{2}$ " SQ. SEC.)
② 45 " " SPACER	702-16-03	4-20-13	2	($\frac{3}{8}$ " THICK)
46 LINK ANCHOR PLATE	74B-01-03	4-3-14	1	
47 " " " SPACER	74B-01-04	4-13-10	4	
48 " " " BOLT	TD 259	12-7-8	4	($\frac{1}{2}$ "UNFx3"CH)
49 " " " WASHER	TD 326	20-1-10	4	($\frac{1}{2}$ " T & C)
50 " " " THROUGH BOLT			2	
51 " " " " WASHER	TD 326	20-1-10	2	($\frac{1}{2}$ " T & C)
52 " " " " NYLOC NUT	TD 382	13-3-5	2	($\frac{1}{2}$ "UNF FULL)
② 53 " " " FORWARD DOUBLE SHEAR BRACKET	75B-01-23	3-16-11	1	
② 54 " " " FORWARD DOUBLE SHEAR BRACKET BOLT	TD 230	12-5-3	1	($\frac{3}{8}$ "UNF x1 $\frac{1}{4}$ "CH)
② 55 " " " FORWARD DOUBLE SHEAR BRACKET SPRING	TD 336	20-1-13	1	($\frac{3}{8}$ " SQ. SEC.)
② 56 " " " FORWARD DOUBLE SHEAR BRACKET WASHER	TD 324	20-1-8	1	($\frac{3}{8}$ " T & C)
57 REAR SKID	75B-01-06	4-14-1	1	
58 " " BOLT			2	
ENGINE EXHAUST SYSTEM	TD	24-1-6	1	
COMPRISES:				
59 PRIMARY PIPE			4	
60 TAIL PIPE			1	(NICKEL-PLATE)
61 " " SPLIT PIN			2	
62 ENGINE EXHAUST FLANGE NUT		13-2-8	12	
63 ENGINE EXHAUST BRACKET	75B-01-16	2-0-12	1	

ISSUE	SIGNATURE	DATE
1	JR Howeyd	18-4-75
2	JR Howeyd	16-5-75

SECTION F9

Item	Ref. No.	Matrix	No. Off	Detail
64			2	
65			1	
66	73B-16-02	4-21-2	1	(SINGLE PLATE)
67	73B-16-01	4-21-3	1	(TWIN PLATE)
ENGINE THROTTLE CABLE ASSEMBLY				
COMPRISES:				
68	TD 35		1	
69			1	
70	TD 40		1	(1/16" x 1" LONG)
71			1	
72	TD 31		1	
73	TD 32		1	
74	TD 33		1	
② 75	TD		1	(" I.D. CLEAR PLASTIC)
75	TD 30		1	
76	TD 33		1	
77	TD 32		1	
78			1	
79	TD 35		1	
80	TD 36		1	
81			1	
82	TD 40		1	(1/16" DIA. x 1" LONG)
83			1	
84	TD 203	12-3-1	2	(1/4" UNFx 1" CH)
85	TD 322	20-1-6	4	(1/4" T & C)
86	TD 378	13-3-1	2	(1/4" UNF FULL)
87			1	
88			2	
89			1	
90			1	
91	TD 40		1	(1/16" DIA. x 1" LONG)
92	TD 61	8-3-2	1	(0-12000 RPM)
93	TD 64	8-3-3	1	

ENGINE INSTALLATION KIT - 75B

ISSUE	SIGNATURE	DATE
1	JR Holroyd	18-9-75
2	JR Holroyd	16-5-75

SHEET 4 OF 4

SECTION F9

Item	Ref. No.	Matrix	No. Off	Detail
94 GAUGE (OIL PRESSURE/OIL TEMP.) OIL PRESSURE LINE ASSEMBLY	TD 66	8-3-6	1 1	(12FT CAPILLARY)
COMPRISES:				
95 UNION	TD 705	8-4-10	1	($\frac{1}{8}$ " BSP 90°)
96 HOSE	TD 704	8-4-9	1	($\frac{3}{8}$ " I.D.)
97 UNION	TD 705	8-4-10	1	($\frac{1}{8}$ " BSP 90°)
98 GAUGE (WATER TEMPERATURE)	TD 63	8-3-7	1	(6FT CAPILLARY)
99 AIR BOX		11-2-12	1	
100 AIR BOX BASE	75B-12-01	3-4-8	1	
101 GEARBOX INPUT SHAFT			1	
102 " " " CIRCLIP			1	
2) 103 LINKANCHOR PLATE REARWARD DOUBLE SHEAR BRACKET	75B-01-09	3-12-8	1	
2) 104 " " " DOUBLE SHEAR BRACKET BOLT	TD230	12-5-3	1	($\frac{3}{8}$ "UNF x $1\frac{1}{4}$ "CH)
2) 105 " " " DOUBLE SHEAR BRACKET SPRING WASHER	TD336	20-1-13	1	($\frac{3}{8}$ " SQ. SEC)
2) 106 " " " DOUBLE SHEAR BRACKET WASHER	TD324	20-1-8	1	($\frac{3}{8}$ " T&C)

ISSUE	SIGNATURE	DATE
1	JRHolroyd	18-4-75

SECTION J9

	Item	Ref. No.	Matrix	No. Off	Detail
* 1	FUEL TANK LH ()	* 73B-15-01		1	(SHORT) *
* 2	" " RH (U.S.A. SPEC.)	* 732-15-02		1	(LONG) *
3	FUEL COLLECTOR POT	752-15-06	2-2-14	1	
4	" " " JUBILEE CLIP	TD 725	25-1-8	2	(IX SIZE)
5	" " " OUTLET UNION	TD 300	21-1-10	1	(-8 St AEROQUIP)
6	HOSE-COLLECTOR POT TO FUEL FILTER (4" LENGTH)	TD 293	21-2-10	1	(-8 AEROQUIP)
7	FUEL FILTER INLET UNION	TD 300	21-1-10	1	(-8 St AEROQUIP)
8	" " " ADAPTOR	752-15-11	4-8-14	1	(-8/-8 MALE/MALE)
9	" " " END	753-15-03	4-11-8	1	
10	" " ELEMENT		8-10-5	1	
11	" " OUTLET END	753-15-02	4-11-7	1	
12	" " " BOLT			1	
13	" " " WASHER			1	
14	" " " PLUG	753-15-06	4-8-12	1	(-6 SIZE)
15	" " " PLUG	752-17-08	4-19-10	1	(1/8" BSP SIZE)
16	" " " DOWTY WASHER			1	(1/8" BSP)
17	" " " ADAPTOR			1	(-6/-6MALE/MALE)
18	" " " UNION	TD 313	21-1-9	1	(-6 90°AEROQUIP)
19	HOSE-FUEL FILTER TO FUEL PUMP (10" LENGTH)	TD 292	21-2-9	1	(-6 AEROQUIP)
20	FUEL PUMP INLET UNION	TD 299	21-1-7	1	(-6 St AEROQUIP)
21	" " BANJO		4-16-12	2	
22	" " METALASTIC BUSH			2	
23	" " MOUNTING BOLT	TD 545	12-11-13	2	(1/4"UNFx1"HH)
24	" " " SPRING WASHER	TD 334	20-1-11	2	(1/4" SQ. SEC.)
25	" " " NYLOC NUT	TD 378	13-3-1	2	(1/4" UNF FULL)
26	FUEL PUMP MOUNTING BRACKET		3-7-6	1	
27	" " " BOLT	TD 561	12-17-7	2	(5/16"UNF x 1/2"HH)
28	" " " BRACKET SPRING WASHER	TD 335	20-1-12	2	(5/16" SQ. SEC.)
29	" " " WASHER	TD 323	20-1-7	2	(5/16" T & C)
* 1	FUEL TANK LH (BRITISH	73B-15-01	17-1-1		(SHORT)
* 1	" " RH (ATLANTIC SPEC.)	73B-15-02	17-1-2		(SHORT)

FUEL SYSTEM - 75B

SHEET 2 OF 3

ISSUE	SIGNATURE	DATE
1	JRHolroyd	18-4-75
2	JRHolroyd	16-5-75

SECTION J9

Item	Ref. No.	Matrix	No. Off	Detail
30 FUEL PUMP MOUNTING PLATE		3-4-4	1	(RIVETTED TO MONO
31 FUEL PUMP OUTLET UNION	TD 313	21-1-9	1	(-6 90°AEROQUIP)
32 HOSE-FUEL PUMP TO PRESSURE REGULATOR (10" LENGTH)	TD 292	21-2-9	1	(-6 AEROQUIP)
33 FUEL PRESSURE REGULATOR INLET UNION	TD 306	21-1-8	1	(-6 45°AEROQUIP)
② 34 FUEL PRESSURE " INLET ADAPTOR	758-15-05	4-24-15	1	
35 " " " " DOWTY WASHER			1	
36 FUEL PRESSURE REGULATOR	TD 20	8-6-8	1	
37 " " " BOLT	TD 529	12-2-14	2	(2BA x 1/2" BH)
38 " " " WASHER	TD 351		4	(2BA PLAIN)
39 " " " NYLOC NUT	TD 410		2	(2BA FULL)
40 " " " MOUNTING BRACKET		3-7-10	1	
41 " " " " BRACKET BOLT	TD 517	12-3-11	4	(1/4" UNF x 1/2" CH)
42 " " " " WASHER	TD 322	20-1-6	8	(1/4" T & C)
43 " " " " NYLOC NUT	TD 378	13-3-1	4	(1/4" UNF FULL)
② 44 " " " OUTLET ADAPTOR	758-15-05	4-24-15	1	
45 " " " " DOWTY WASHER			1	
46 " " " " UNION	TD 313	21-1-9	1	(-6 90°AEROQUIP)
47 HOSE-PRESSURE REGULATOR TO CARBS (26" LENGTH)	TD 292	21-2-9	1	(-6 AEROQUIP)
48 FRONT CARBURETTER INLET UNION	TD 306	21-1-8	1	(-6 45°AEROQUIP)
49 " " " TEE BANJO		3-12-1	1	
50 " " " OUTLET UNION	TD 299	21-1-7	1	(-6 St AEROQUIP)
51 HOSE-FRONT CARB TO REAR CARB (4" LENGTH)	TD 292	21-2-9	1	(-6 AEROQUIP)
52 REAR CARBURETTER INLET UNION	TD 299	21-1-7	1	(-6 St AEROQUIP)
53 " " " BANJO		3-12-2	1	
② 54 FUEL FILLER	758-15-10	3-16-14	1	
* 55 " " CAP	* 722-18-11	4-20-1	1	*
56 " " CAP 'O' RING	TD 70	8-8-9	1	
57 " " ROLLOVER BAR BRACKET		3-11-10	1	
58 " " " " BOLT	TD 529	12-2-14	2	(2BA x 1/2" BH)
59 " " " " NYLOC NUT	TD 410		2	(2BA FULL)
60 " " " " JUBILEE CLIP			1	
61 " " RUBBER HOSE (4" LENGTH)	TD 757	8-10-6	1	(1 3/4" I.D.)
62 " " " " JUBILEE CLIP	TD 727	25-1-10	2	(NO 2 SIZE)
* SUBSEQUENTLY FUEL FILLER CAP	742-14-03		1	

FUEL SYSTEM - 75B

ISSUE	SIGNATURE	DATE
1	JRHolroyd	18-4-75.
2	JRHolroyd	16-5-75.

SHEET 3 OF 3

SECTION J9

Item	Ref. No.	Matrix	No. Off	Detail
63 FUEL FILLER BREATHER PIPE (52" LENGTH)	TD 738		1	(1/2" ID CLEAR PLASTIC)
64 " " " " JUBILEE CLIP			1	
65 " " " " VALVE	753-15-04	4-11-13	1	
66 " " " " " PINCH CLIP			1	(5/8" SIZE)
67 FUEL TANK BREATHER JUBILEE CLIP	TD 721		2	(O size)
② 68 FUEL TANK BREATHER TUBE LH	758-15-11	3-11-13	1	(ALLOY)
② 69 " " " " RH	758-15-11	3-11-13	1	(ALLOY)
70 " " " " PIPE (4" LENGTH)			1	
71 " " " " (10" LENGTH)			1	
72 " " " " JUBILEE CLIP	TD 720	25-1-3	4	(OO SIZE)
73 FUEL PRESSURE REGULATOR RETURN UNION			1	(-6 90° Aeroquip)
74 HOSE REGULATOR TO CONNECTOR POT (" LENGTH)			1	(-6 AEROQUIP)
75 COLLECTOR POT INLET UNION			1	(-6 90° AEROQUIP)
76 FUEL PUMP			1	(MITSUBA OR BENDIX)
77 " " BANJO BOLT			2	
78 FUEL FILTER END MOUNTING BOLT			4	
79 " " " " " SPRING WASHER			4	

ISSUE	SIGNATURE	DATE
1	JR Helwood	18-4-75

SECTION L4

Item	Ref. No.	Matrix	No. Off	Detail
FRONT BRAKES				
1			1	
2			3	
3	TD 284		1	(0.75" SIZE)
4			2	(5/16" UNF x 2 1/2" CH)
5			4	(5/16" T & C)
6			2	(5/16" UNF FULL)
7	TD 698		1	(3/8" THIN)
8	TD 690		1	
9	TD 688		1	(7/16" THIN)
10	TD 691		1	(2 WAY 90°)
11	732-06-18		2	(1/8" BSP / 3/8" UNF MALE/MALE)
12	TD 689		2	(3/8" THIN)
13	TD 697		2	(-3 BSP St AERO-QUIP)
14	TD 290		2	(-3 AEROQUIP)
15	TD 701		2	(-3 BSP 90° AERO-QUIP)
16	732-06-18		2	(1/8" BSP / 3/8" UNF MALE/MALE)
17			2	(3/8" THICK)
18	TD 111		1	
19	TD 111		1	
20			2	
21			4	
22			4	(7/16" T & C)
23	753-06-02		4	
REAR BRAKES				
24			1	
25			3	
26	TD 280		1	(0.70" SIZE)
27			2	(5/16" UNF x 2 1/2" CH)
28			4	(5/16" T & C)
29			2	(5/16" UNF FULL)
30	TD 694		1	(3/16" O.D.)
31	752-26-02		1	

ISSUE	SIGNATURE	DATE
1	JPL/loyd	18-4-75.

SECTION L4

Item	Ref. No.	Matrix	No. Off	Detail
<u>REAR BRAKES (CONT'D)</u>				
32			1	
33			1	
34	TD 697		1	(-3 BSP St AEROQUIP)
35	TD 290		1	(-3 AEROQUIP)
36	TD 701		1	(-3BSP 90° AEROQUIP)
37	732-06-18		1	(1/8" BSP/3/8" UNF MALE/MALE)
38			1	
39	TD 112		1	
40			2	
41			2	
42			2	
43	74B-10-01		1	
44			2	
45	732-06-18		1	(1/8" BSP/3/8" UNF MALE/MALE)
46			1	(3/8" THIN)
47			1	(-3BSP 45° AEROQUIP)
48			1	(-3 AEROQUIP)
49	TD 701		1	(-3BSP 90° AEROQUIP)
50	732-06-18		1	(1/8" BSP/3/8" UNF MALE/MALE)
51			1	
52	TD 112		1	
53			2	
54			2	
55			2	
56	74B-10-01		1	
57			2	
<u>CLUTCH</u>				
58			1	
59			3	
60	TD 284		1	(0.75" SIZE)

ISSUE	SIGNATURE	DATE
1	JRHolroyd	18-4-75
2	JRHolroyd	16-5-75

SECTION L4

Item	Ref. No.	Matrix	No. Off	Detail
<u>CLUTCH (CONT'D)</u>				
61 CLUTCH MASTER CYLINDER BOLT			1	(5/16" UNF x 2 1/2 CF)
62 " " " WASHER			4	(5/16" T & C)
63 " " " NYLOC NUT			2	(5/16" UNF FULL)
64 " " " COPPER WASHER	TD 689		1	(3/8" THIN)
65 " " " ADAPTOR	TD 687		1	
66 CLUTCH BUNDY PIPE (96" LENGTH)	TD 692		1	(1/4" O.D.)
67 CLUTCH BULKHEAD ADAPTOR	722-18-04		1	
68 " " " NUT			1	
69 " " " STAR WASHER			1	
70 " " " UNION	TD 698		1	(-4 BSP St AEROQUIP)
71 HOSE-BULKHEAD ADAPTOR TO SLAVE CYLINDER	TD 291		1	(-4 AEROQUIP)
72 CLUTCH SLAVE CYLINDER INLET UNION	TD 698		1	(-4 BSP St AEROQUIP)
73 " " " "ADAPTOR	722-18-08		1	(1/4" BSP/3/8" UNF MALE/MALE)
74 " " " " " COPPER WASHER	TD 689		1	(3/8" THIN)
75 BRAKE CALIPER MOUNTING BLOCK WASHER			4	
② 76 MASTER CYLINDER BREATHER ADAPTOR	752-26-05	4-24-3	3	
② 77 MASTER CYLINDER BREATHER PIPE (7" LENGTH)	TD		2	
② 78 " " " " (5" LENGTH)	TD		1	
② 79 " " " " TEE PIECE			1	
② 80 " " " " WASHER			3	
② 81 " " " " NUT			3	

ISSUE	SIGNATURE	DATE
1	JR Howeyd	18-4-75

SECTION A4

Item	Ref. No.	Matrix	No. Off	Detail
MONOCOQUE ASSEMBLY	753-01-37		1	
COMPRISES:				
1 SEAT TANK COVER PLATE	732-01-35		1	
2 " " " " DZUS	TD 155		4	
3 " " " " DZUS WIRE	TD 155		4	
4 REAR DIAPHRAGM LH	742-01-28		1	
5 " " RH	742-01-21		1	
6 REAR DIAPHRAGM STRIP	723-01-56		2	
7 " " BOLT	TD 529	12-2-14	30	(2BA x 1/2" BH)
8 " " WASHER	TD 365		60	(2BA T & C)
9 " " NYLOC NUT	TD 410		30	(2BA FULL)
10 " " BOLT	TD 517	12-3-11	14	(1/4" UNF x 1/2" CH)
11 " " SPRING WASHER	TD 334		14	(1/4" SQ. SEC.)
12 " " WASHER	TD 322		14	(1/4" T & C)
13 " " METALASTIC BUSH	TD 156		2	(F3 & FR ONLY)
14 " " " "	TD 156		4	(FB ONLY)
15 RACK MOUNTING BLOCK	752-04-03		2	
16 " " " BOLT				
17 5KG FIRE EXTINGUISHER MOUNTING	752-01-89		1	
18 LIFE SUPPORT/FIRE EXTINGUISHER MOUNTING BRACKET	753-01-13	3-1-11	1	
19 GEARSHIFT SHROUD	753-01-40		1	
20 " " BOLT	TD 529	12-2-14	7	(2BA x 1/2" BH)
21 " " WASHER	TD 365		7	(2BA T & C)
22 FRONT SUSPENSION PLATE	753-01-64		2	(1/8" THICK)
23 " " " BOLT	TD 216	12-4-3	4	(5/16" UNF x 1" CH)
24 " " " WASHER	TD 323		4	(5/16" T & C)
25 LEFT FOOT REST	712-01-57		1	
26 " " " BOLT	TD 529	12-2-14	4	(2BA x 1/2" BH)
27 " " " NYLOC NUT	TD 410		4	(2BA FULL)
28 HEEL REST	712-01-80		1	
29 SEAT BELT	TD 10		1	
30 " " PLATE - FLAT	722-01-74		2	
31 " " " - JOGGLED	722-01-75		2	
32 " " " BOLT	TD 216	12-4-3	8	(5/16" UNF x 1" BH)
33 " " " WASHER	TD 323		8	(5/16" T & C)
34 " " " NYLOC NUT	TD 410		8	(5/16" UNF HALF)

ISSUE	SIGNATURE	DATE
1	JPHolweyd	18-4-75

SECTION A4

Item	Ref. No.	Matrix	No. Off	Detail
35 SUB DASH PANEL	712-01-62		1	
36 " " " MOUNTING RUBBER	TD 8	8-1-1	4	
37 " " " DOME NUT	TD 416		4	(2BA)
38 " " " WASHER	TD 365		4	(2BA T & C)
39 " " " NYLOC NUT	TD 410		4	(2BA FULL)
40 ROLLOVER BAR	75B-01-18	1-4-14	1	(FB ONLY NICKEL PLATE)
41 " " BOLT	TD 237	12-5-10	2	($\frac{3}{8}$ "UNF x 3"CH)
42 " " NYLOC NUT	TD 380		2	($\frac{3}{8}$ "UNF FULL)
43 ROLLOVER BAR STAY	732-01-18		2	
44 " " " TOP BOLT	TD 236	12-5-9	2	($\frac{3}{8}$ "UNF x 2 $\frac{3}{4}$ "CH)
45 " " " TOP NYLOC NUT	TD 380		2	($\frac{3}{8}$ "UNF FULL)
46 " " " BOTTOM BOLT	TD 229	12-5-2	2	($\frac{3}{8}$ "UNF x 1"CH)
47 SEAT BELT SHOULDER STRAP BOLT			2	
48 " " " " NYLOC NUT			2	
49 FRONT SKID	722-01-91	5-1-3	1	
50 " " BOLT			3	
51 STEERING WHEEL	742-04-02	8-1-3	1	
52 " " RETAINER WASHER	712-04-07	4-2-4	1	
53 " " " RIVET	TD 7	8-1-4	3	
54 " " " BOLT			1	
55 STEERING COLUMN	712-04-04	3-1-1	1	(30" LENGTH)
56 " " SUPPORT	732-04-02	4-2-1	2	
57 " " " BOLT	TD 220		1	(5/16"UNFx2"CH)
58 " " " WASHER	TD 323		1	(5/16" T & C)
59 " " " NYLOC NUT	TD 379		1	(5/16"UNF FULL)
60 " " UNIVERSAL JOINT	TD 9	8-1-2	1	
61 " " " JOINT BOLT			2	
62 " " " NYLOC NUT			2	
63 CHASSIS PLATE		8-4-4	1	
64 CAUTION PLATE		8-3-12	1	
GEARCHANGE MECHANISM				
65 COMPRISES: GEAR LEVER	732-11-10	4-5-1	1	
66 " " PIVOT	712-11-10	4-5-2	1	
67 " " " BOLT	TD 203		1	($\frac{1}{4}$ "UNF x 1"CH)

ISSUE	SIGNATURE	DATE
1	JPHelwood	18-4-75
2	JPHelwood	16-5-75

SECTION A4

Item	Ref. No.	Matrix	No. Off	Detail
68	TD 378		1	($\frac{1}{4}$ " UNF FULL)
② 69	752-11-04	4-24-12	1	
70			1	" " ROSEJOINT BOLT
71			1	" " " WASHER
72	742-11-04	4-5-4	1	GEAR FORK
② 73	752-11-05	8-6-10	1	GEAR LEVER BADGE
74			1	ROSEJOINT LOCKNUT
				FIRE EXTINGUISHER SYSTEM
				COMPRISES:
75				COCKPIT FIRE LEVER ASSEMBLY
				COMPRISES:
76			1	COCKPIT FIRE LEVER
77			1	" " " BADGE
78			1	" " " BOLT
79			1	" " " SPRING WASHER
80			1	" " " WASHER
81			1	" " " LABEL
				TO 5 KG BOTTLE
82			1	CLEVIS
83			1	CLEVIS PIN
84			1	" " SPLIT PIN
85			1	" " WASHER
86			1	RETURN SPRING
87			1	CABLE ADJUSTER
88			1	" " LOCKNUT
89			1	FERRULE
90			1	INNER CABLE
91			1	OUTER CABLE
92			1	FERRULE
93			1	CABLE ADJUSTER
94			1	" " LOCKNUT
95			2	SOLDER-ON NIPPLE
96			1	90° CABLE GUIDE TUBE AND LOCKNUT
97			1	OPERATING HEAD
98	TD 709		1	EXTINGUISHER BOTTLE
99	TD 709		2	" " STRAP

ISSUE	SIGNATURE	DATE
1	JPHolroyd	18-4-75
2	JPHolroyd	16-5-75.

SECTION A4

Item	Ref. No.	Matrix	No. Off	Detail
101 PURPLE ARMoured PIPE	TD 709		1	(24" LENGTH)
② 102 " " " ADAPTOR	722-18-08	4-8-8	1	($\frac{3}{8}$ " UNF/ $\frac{1}{4}$ " BSP MALE/MALE)
② 103 " " " COPPER WASHER			2	
② 104 " " " THREE WAY ADAPTOR			1	
② 105 " " " BOLT			1	
② 106 " " " NYLOC NUT			1	
② 107 EXTINGUISHER ADAPTOR	75B-22-01	4-24-14	1	($\frac{1}{8}$ " BSP/ $\frac{1}{4}$ " BSP MALE/FEMALE)
② 108 COCKPIT NOZZLE	TD709		6	
109 EXTINGUISHER BUNDY PIPE		8-12-9	1	
110 REAR BULKHEAD NOZZLE		29-2-14	1	
111 " " " NUT			1	
112 " " " UNION			1	
113 " " " OLIVE			1	
MONOCOQUE GROMMETS				
114 DASHBOARD GROMMET			1	(1 $\frac{1}{2}$ " O.D. 1" I.D.)
115 " "			2	(1" O.D. $\frac{5}{8}$ " I.D.)
116 " BLANKING GROMMET			1	($\frac{1}{2}$ " HOLE SIZE)
117 REAR DIAPHRAGM GROMMET			1	(1 $\frac{1}{2}$ " O.D. $\frac{3}{4}$ " I.D.)
118 " " BLANKING GROMMET			1	(1" HOLE SIZE)
119 FRONT SUSPENSION PLATE GROMMET			2	(1 $\frac{1}{4}$ " O.D. $\frac{3}{4}$ " I.D. WIDE)
120 FLEXIGROMMET			1	
121 RACK MOUNTING BLOCK PLAIN WASHER			2	
122 STEERING COLUMN BOLT			1	
123 " " NYLOC NUT			1	

ISSUE	SIGNATURE	DATE
1	J.R. Holroyd	18-4-75

SECTION H9

Item	Ref. No.	Matrix	No. Off	Detail
1 OIL TANK	75B-14-01	3-6-3	1	
2 " " MOUNTING RUBBER		8-8-8	3	
3 " " " WASHER			6	
4 " " " NYLOC NUT	TD 378	13-3-1	3	($\frac{1}{4}$ " UNF FULL)
5 " " TIE-ROD	75B-01-14	3-9-5	1	
6 " " " " BOLT	TD 205	12-3-3	1	($\frac{1}{4}$ " UNF x $1\frac{1}{2}$ " CH)
7 " " " " WASHER	TD 322	20-1-6	1	($\frac{1}{4}$ " T & C)
8 " " " " NYLOC NUT	TD 378	13-3-1	1	($\frac{1}{4}$ " UNF FULL)
OIL TANK CAP ASSEMBLY			1	
COMPRISES:				
9 CAP	742-14-03	4-6-4	1	
10 O RING	TD 70	8-8-9	1	
11 FOAM CYLINDER	TD 69	8-5-15	1	
12 SPINDLE	742-14-17	4-11-15	1	
13 BIG HEAD END WASHER	TD 71	8-5-14	2	
14 OIL TANK BREATHER PIPE (26" LENGTH)	TD 740	8-7-13	1	($\frac{3}{4}$ " I.D. CLEAR PLASTIC)
15 " " " " JUBILEE CLIP			1	
16 OIL TANK OUTLET UNION	TD 316	21-2-3	1	(-12 90° AEROQUIP)
17 HOSE-OIL TANK TO OIL PUMP (38" LENGTH)	TD 295	21-2-12	1	(-12 AEROQUIP)
18 OIL PUMP MAIN INLET UNION	TD 316	21-2-3	1	(-12 90° AEROQUIP)
19 " " " " EXTENSION ADAPTOR	75B-14-03	4-13-2	1	(-12/ $\frac{1}{2}$ " BSP 4" LENGTH)
20 " " " " " DOWTY WASHER			1	($\frac{5}{8}$ " BSP SIZE)
21 OIL PUMP OUTLET UNION	TD 315	21-1-15	1	(-10 90° AEROQUIP)
22 " " " EXTENSION ADAPTOR	75B-14-04	4-13-8	1	(-10/ $\frac{1}{2}$ " BSP 3 $\frac{13}{16}$ " LENGTH)
23 " " " " DOWTY WASHER			1	($\frac{1}{2}$ " BSP SIZE)
24 HOSE-OIL PUMP TO OIL FILTER (15" LENGTH)	TD 294	21-2-11	1	(-10 AEROQUIP)
25 OIL FILTER INLET UNION	TD 308	21-1-14	1	(-10 45° AEROQUIP)
OIL FILTER ASSEMBLY			1	
COMPRISES:				
26 ELEMENT	TD 75	8-7-3	1	
27 HOUSING	TD 74	8-6-14	1	
28 " WASHER			1	
29 " BOLT			1	

ISSUE	SIGNATURE	DATE
1	J. H. Howard	18-4-75
2	J. H. Howard	16-5-75.

SECTION H9

Item	Ref. No.	Matrix	No. Off	Detail
<u>OIL FILTER ASSEMBLY CONT'D</u>				
30 HOUSING MOUNTING PLATE	75B-01-10	3-7-13	1	
31 " " " ADAPTOR			2	($\frac{1}{2}$ " BSP/-10 MALE/MALE)
32 " " " " DOWTY WASHER			2	
33 " " " BOLT	TD 203	12-3-1	2	($\frac{1}{4}$ " UNF x 1" CH)
34 " " " PLAIN WASHER	TD 346	20-2-8	2	($\frac{1}{4}$ " LARGE)
35 " " " SPRING WASHER	TD 334	20-1-11	2	($\frac{1}{4}$ " SQ. SEC.)
36 " " " METALASTIC BUSH	TD 84	8-8-4	2	($\frac{1}{4}$ " I.D. 9/16" O.D. $\frac{1}{2}$ " LONG)
37 " " " SPACER			2	($\frac{3}{16}$ " THICK)
38 OIL FILTER OUTLET UNION	TD 315	21-1-15	1	(-10 90° AEROQUIP)
39 HOSE-OIL FILTER TO OIL PUMP (12" LENGTH)	TD 294	21-2-11	1	(-10 AEROQUIP)
40 OIL PUMP ENGINE INLET UNION	TD 315	21-1-15	1	(-10 90° AEROQUIP)
41 " " " EXTENSION ADAPTOR	75B-14-05	4-13-7	1	(-10/ $\frac{1}{2}$ " BSP 2 $\frac{1}{2}$ " LENGTH)
42 " " " " DOWTY WASHER			1	($\frac{1}{2}$ " BSP SIZE)
43 OIL PUMP SCAVENGE OUTLET UNION	TD 316	21-2-3	1	(-12 90° AEROQUIP)
44 " " " " ADAPTOR			1	
45 " " " " DOWTY WASHER			1	
46 HOSE-OIL PUMP TO OIL COOLER (18" LENGTH)	TD 295	21-2-12	1	(-12 AEROQUIP)
47 OIL COOLER INLET UNION	TD 316	21-2-3	1	(-12 90° AEROQUIP)
48 " " OUTLET UNION	TD 316	21-2-3	1	(-12 90° AEROQUIP)
49 HOSE-OIL COOLER TO OIL TANK (39" LENGTH)	TD 295	21-2-12	1	(-12 AEROQUIP)
50 OIL TANK INLET UNION	TD 316	21-2-3	1	(-12 90° AEROQUIP)
51 CAM COVER BREATHER PIPE (2" LENGTH)	TD 738	8-7-8	1	($\frac{1}{2}$ " I.D. CLEAR PLASTIC)
52 " " " PIPE (48" LENGTH)	TD 738	8-7-8	1	($\frac{1}{2}$ " I.D. CLEAR PLASTIC)
53 " " " " JUBILEE CLIP	TD 720	25-1-3	3	(00 SIZE)
54 BREATHER BOTTLE	TD 420	8-4-1	1	
55 " " BRACKET	TD 421	8-4-2	1	
56 " " BOLT			4	
57 " " NYLOC NUT			4	
② 58 CAM COVER BREATHER PIPE 90° ELBOW	75B-14-06	3-16-12	1	

REAR SUSPENSION - 75B

SHEET 1 OF 2

ISSUE	SIGNATURE	DATE
1	JRHolroyd	18-9-75
2	JRHolroyd	16-5-75

SECTION C4

Item	Ref. No.	Matrix	No. Off	Detail
1 TOP RADIUS ARM	753-03-01	3-3-1	2	(26.50" LENGTH)
2 BOTTOM RADIUS ARM	753-03-02	3-3-2	2	(24.50" LENGTH)
3 RADIUS ARM FORWARD FIXING BOLT	TD 236	12-5-9	4	($\frac{3}{8}$ " UNF x $2\frac{3}{4}$ " CH)
4 " " " SAFETY WASHER	73B-18-01	4-15-13	4	
5 " " " NYLOC NUT	TD 380	13-3-3	4	($\frac{3}{8}$ " unf FULL)
6 RADIUS ARM REARWARD FIXING BOLT	TD 231	12-5-4	4	($\frac{3}{8}$ " unf x $1\frac{1}{2}$ " CH)
7 " " " FIXING NYLOC NUT	TD 380	13-3-3	4	($\frac{3}{8}$ " UNF FULL)
② 8 TOP CLEVIS	75R-03-03	4-6-14	2	
9 " " UPRIGHT WASHER	712-03-20	4-2-15	4	
10 " " NYLOC NUT	TD 375	13-3-11	2	($\frac{1}{2}$ " UNF HALF)
② 11 BOTTOM CLEVIS	75R-03-03	4-6-14	2	
12 " " UPRIGHT WASHER	712-03-20	4-2-15	4	
13 " " PLAIN WASHER	TD 326	20-1-10	2	($\frac{1}{2}$ " T & C)
14 " " NYLOC NUT	TD 375	13-3-11	2	($\frac{1}{2}$ " UNF HALF)
15 REAR CROSSMEMBER PLATE	75B-01-04	1-2-15	2	
16 TOP LINK	703-03-06	4-6-6	2	(4.5" LENGTH)
17 " " INNER ROSE JOINT LOCKNUT	TD 389	13-4-10	2	($\frac{1}{2}$ " UNF HALF)
18 " " OUTER ROSE JOINT LOCKNUT	TD 402	13-4-14	2	($\frac{1}{2}$ " UNF LH HALF)
19 BOTTOM LINK	735-03-04	3-4-3	4	(9.5" LENGTH)
20 " " INNER L.A. PLATE WASHER	712-03-20	4-2-15	8	
21 " " OUTER UPRIGHT BOLT	TD 526	12-7-9	2	($\frac{1}{2}$ " UNF x $3\frac{1}{2}$ " CH)
22 " " " UPRIGHT WASHER	712-03-20	4-2-15	4	
23 " " " PLAIN WASHER	TD 326	20-1-10	2	($\frac{1}{2}$ " T & C)
24 " " " NYLOC NUT	TD 375	13-3-11	2	($\frac{1}{2}$ " UNF HALF)
25 " " INNER ROSE JOINT LOCKNUT	TD 402	13-4-14	4	($\frac{1}{2}$ " UNF LH HALF)
26 " " OUTER ROSE JOINT LOCKNUT	TD 389	13-4-10	4	($\frac{1}{2}$ " UNF HALF)
27 REAR DAMPER	TD 197	16-1-9	2	(1180B KONI)
28 " " INSERT	712-02-09	4-2-12	4	
29 " " TOP BOLT	TD 238	12-5-12	2	($\frac{3}{8}$ " UNF x $3\frac{1}{2}$ " CH)
30 " " TOP NYLOC NUT	TD 380	13-3-3	2	($\frac{3}{8}$ " UNF FULL)
31 " " BOTTOM BOLT	TD 526	12-7-9	2	($\frac{1}{2}$ " UNF x $3\frac{1}{2}$ " CH)
32 " " BOTTOM NYLOC NUT	TD 375	13-3-11	2	($\frac{1}{2}$ " UNF HALF)
33 " " BOTTOM WASHER	712-03-20	4-2-15	4	
34 REAR SPRING	TD 437	16-1-4	2	(8" X 350 lb)
35 TYRAP - LARGE	TD 195	8-3-15	2	

REAR SUSPENSION - 75B

SHEET 2 OF 2

ISSUE	SIGNATURE	DATE
1	JR. Heyd	18-4-75
2	JR. Heyd	16-5-75.

SECTION C4

Item	Ref. No.	Matrix	No. Off	Detail
36 REAR ANTI-ROLL BAR	732-05-04	2-1-9	1	(1" DIA x 16g)
37 RARB MOUNTING	732-05-05	4-2-2	4	(1" ID)
38 " " SPACER	75B-01-15	4-15-14	2	(0.15" THICK)
39 " " BOLT	TD 207	12-3-5	4	(1/4" UNF x 2" CH)
40 " " PLAIN WASHER	TD 322	20-1-6	8	(1/4" T & C)
41 " " NYLOC NUT	TD 378	13-3-1	4	(1/4" UNF FULL)
42 RARB CLAMP	72X-05-19	1-2-9	2	(1" ID)
43 " " BOLT	TD 204	12-3-2	2	(1/4" UNF x 1 1/4" CH)
44 " " NYLOC NUT	TD 378	13-3-1	2	(1/4" UNF FULL)
45 RARB LINK	732-05-02	1-2-12	2	(10 7/8" LENGTH)
46 " " TOP BOLT	TD 216	12-4-3	2	(5/16" UNF x 1" CH)
47 " " TOP NYLOC NUT	TD 379	13-3-2	2	(5/16" UNF FULL)
48 " " BOTTOM BOLT	TD 519	12-4-2	2	(5/16" UNF x 3 1/4" CH)
49 " " BOTTOM FORWARD WASHER	703-02-12	4-1-15	2	
50 " " BOTTOM REARWARD WASHER	722-05-12	4-1-14	2	
51 " " BOTTOM NYLOC NUT	TD 379	13-3-2	2	(5/16" UNF FULL)
52 " " ROSE JOINT LOCKNUT	TD 386	13-4-7	4	(5/16" UNF HALF)
53 TOP LINK SPACER	712-01-03		2	
54 RADIUS ARM ROSEJOINT LOCKNUT			8	

(2)

ISSUE	SIGNATURE	DATE
1	JRHolroyd	18-4-75

SECTION G5

Item	Ref. No.	Matrix	No. Off	Detail
GEARBOX ASSEMBLY				
COMPRISES:				
1	GEARBOX	TD 161	18-1-2	1 (HEWLAND FT200)
2	" OUTPUT FLANGE	TD 162	18-1-8	2
3	" " " CIRCLIP	TD 106	18-2-8	2
4	CLUTCH SLAVE CYLINDER			1
5	" " " BOLT			2
6	" " " WASHER			2
7	" PUSH ROD			1
8	" " " END CAP			1
9	" " " LOCKNUT			3
10	CLUTCH RELEASE BEARING	TD 26	18-2-9	1
11	GEARBOX END COVER	732-16-09	6-1-4	1
12	GEARBOX REAR CROSSMEMBER CLEVIS	732-12-07	4-4-3	2
13	" " " CLEVIS WASHER	TD 326	20-1-10	2 (1/2" T & C)
14	" " " CLEVIS NYLOC NUT	TD 382	13-3-5	2 (1/2" UNF FULL)
15	GEARBOX ADAPTOR PLATE STUD	74B-16-01	4-14-6	4
16	" " " " WASHER	TD 324	20-1-8	4 (3/8" T & C)
17	" " " " NYLOC NUT	TD 373	13-3-9	4 (3/8" UNF HALF)
18				
19				
20				
21		TD 594	12-13-11	2 (3/8" UNFx4 1/2" HH)
22	" " " WASHER	TD 324	20-1-8	4 (3/8" T & C)
23	" " " NYLOC NUT	TD 380	13-3-3	2 (5/8" UNF FULL)
DRIVESHAFT ASSEMBLY				
COMPRISES:				
24	REAR DISC	712-17-01	7-1-3	1
25	PLUNGE JOINT HOUSING	TD 177	14-1-9	1 (89 St JOINT)
26	" " " BOLT	722-10-10	12-1-2	6
27	" " CAGE	TD 176	14-1-7	1 (89 St JOINT)
28	" " BALL	TD 175	14-1-8	6 (89 St JOINT)
29	" " INNER TRACK	TD 179	14-1-6	1 (89 St JOINT)
30	" " GAITER	TD 183	14-1-5	1
31	" " " TYRAP	TD 195	8-3-15	1 (LARGE SIZE)

ISSUE	SIGNATURE	DATE
1	J. Holroyd	18-4-75

SECTION G5

Item	Ref. No.	Matrix	No. Off	Detail
<u>DRIVESHAFT ASSEMBLY (CONT'D)</u>				
32	TD 174	8-1-9	1	
33	712-10-04	4-3-9	1	
34	TD 180	8-1-8	1	
35	TD 183	14-1-5	1	
36	TD 195	8-3-15	1	(LARGE SIZE)
* 37	722-10-03	14-1-1	1	* (100 AC JOINT)
38	TD 182	14-1-3	1	(100 AC JOINT)
39	TD 181	14-1-2	6	(100 AC JOINT)
40	711-10-10	14-1-4	1	(100 AC JOINT)
41	703-06-08	4-1-8	1	
42	TD 16	13-1-1	1	($\frac{3}{4}$ " UNF FULL)
43	73B-11-01	3-5-9	1	
44			1	
45			1	
46	722-11-08	3-5-10	1	
47			1	
48			1	
49			1	
50			1	
* ALTERNATIVE SPEC. IS CV JOINT BELL	742-10-03	14-1-1		

ISSUE	SIGNATURE	DATE
1	JRHolroyd	18-4-75

SECTION 19

Item	Ref. No.	Matrix	No. Off	Detail
1 RADIATOR LH (WATER ONLY)	75B-13-02	27-1-3	1	
2 " RH (WATER/OIL)	75B-13-01	27-1-4	1	
3 " MOUNTING SPACER			2	(3/16" THICK)
4 " " BOLT	TD 219	12-4-6	4	(5/16"UNFx1 ³ / ₄ "CH)
5 " " WASHER	TD 323	20-1-7	8	(5/16" T & C)
6 " " NYLOC NUT	TD 379	13-3-2	4	(5/16" UNF FULL)
7 RADIATOR STONEGUARD	75R-13-05	2-4-1	2	
8 RADIATOR TIE-ROD	753-01-04	3-8-13	2	
9 " " BOLT	TD 205	12-3-3	2	(¹ / ₄ "UNFx1 ¹ / ₂ "CH)
10 " " METALASTIC BUSH			2	
11 RADIATOR " NYLOC NUT			2	
12 " " MOUNTING			4	
13 " " " BOLT	TD 206	12-3-4	4	(¹ / ₄ "UNF x 1 ³ / ₄ "CH)
14 " " " WASHER	TD 322	20-1-6	8	(¹ / ₄ " T & C)
15 " " " NYLOC NUT	TD 378	13-3-1	4	(¹ / ₄ " UNF FULL)
16 RADIATOR RUBBER HOSE (3" LENGTH)	TD 753	8-4-7	3	(1 ¹ / ₄ " I.D.)
17 " " " JUBILEE CLIP	TD 725	25-1-8	8	(1X SIZE)
18 SWIRL POT	75B-13-03	2-3-12	1	
19 " " RUBBER HOSE (4" LENGTH)			1	(SWIRL POT TO THERMOSTAT HOUSING)
20 " " JUBILEE CLIP	TD 727	25-1-10	2	(38-54mm SIZE)
21 THERMOSTAT HOUSING			1	
22 " " BOLT	TD 216	12-4-3	2	(5/16"UNFx1"CH)
23 " " SPRING WASHER	TD 335	20-1-12	2	(5/16" SQ. SEC.)
24 " " PLAIN WASHER	TD 323	20-1-7	2	(5/16" T & C)
25 BLEED PIPE - SWIRL POT TO HEADER TANK	TD 542	8-8-5	1	(5/32" I.D. NYLON)
26 BLEED PIPE-SWIRL POT TO HEADER TANK STRAIGHT UNION	TD 541	8-5-12	2	(¹ / ₈ " BSP SIZE)
27 HEADER TANK	752-13-06	2-3-2	1	
28 " " CAP	TD 72	8-6-11	1	
29 " " MOUNTING TUBE (3" LENGTH)	TD 736	8-7-12	2	(¹ / ₄ " I.D. CLEAR PLASTIC)
30 " " " BOLT	TD 213		2	(¹ / ₄ "UNFx3 ³ / ₄ "CH)
31 " " " WASHER	TD 322	20-1-6	2	(¹ / ₄ " T & C)
32 HEADER TANK MOUNTING NYLOC NUT	TD 378	13-3-1	2	(¹ / ₄ " UNF FULL)
33 " " RUBBER HOSE(11"LNPTH)	TD 748	8-7-10	1	(⁵ / ₈ " I.D.)

ISSUE	SIGNATURE	DATE
1	JRHolroyd	18-4-75
2	JRHolroyd	16-5-75.

SECTION 19

Item	Ref. No.	Matrix	No. Off	Detail
34 HEADER TANK JUBILEE CLIP	TD 722	25-1-5	2	(OX SIZE)
35 REAR WATER PIPE RH	75B-13-04	2-7-10	1	
36 " " " RUBBER HOSE (3" LENGTH)	TD 753	8-4-7	1	(1 1/4" I.D. WATER PIPE TO WATER PUMP)
37 " " " JUBILEE CLIP	TD 725	25-1-8	2	(IX SIZE)
38 " " " 90° RUBBER BEND			1	(WATER PIPE TO RADIATOR)
39 FRONT WATER PIPE RH	75B-13-05	2-7-9	1	
40 BLEED PIPE-HEADER TANK TO RH RADIATOR	TD 542	8-8-5	1	(5/32" I.D. NYLON)
41 BLEED PIPE-HEADER TANK STRAIGHT UNION	TD 541	8-5-12	2	(1/8" BSP SIZE)
42 BLEED PIPE-HEADER TANK TO LH RADIATOR	TD 542	8-8-5	1	(5/32" I.D. NYLON)
43 BLEED PIPE-HEADER TANK STRAIGHT UNION	TD 541	8-5-12	2	(1/8" BSP SIZE)
② 44 HEADER TANK OVERFLOW PIPE (30" LENGTH)	TD 742	8-12-8	1	(5/16" I.D. CLEAR PLASTIC)
② 45 HEADER TANK OVERFLOW PIPE JUBILEE CLIP	TD 718	25-1-1	1	(OOO SIZE)

ISSUE	SIGNATURE	DATE
1	JR Helms	18-4-75
2	JR Helms	16-5-75.

SHEET 1 OF 2

		SECTION M			
	Item	Ref. No.	Matrix	No. Off	Detail
	1 NOSE		11-1-15	1	
	2 NOSE FRAME	75B-01-19	2-5-1	1	(NICKEL-PLATE)
	3 " " TOP BOLT	TD 217	12-4-4	2	(5/16" UNFx1 1/4" CH)
	4 " " " WASHER	TD 323	20-1-7	2	(5/16" T & C)
	5 " " " NYLOC NUT	TD 379	13-3-2	2	(5/16" UNF FULL)
	6 " " BOTTOM BOLT	TD 217	12-4-4	2	(5/16" UNFx1 1/4" CH)
	7 " " " WASHER	TD 323	20-1-7	2	(5/16" T & C)
	8 " " " NYLOC NUT	TD 379	13-3-2	2	(5/16" UNF FULL)
	9 " " ROSEJOINT LOCKNUT	TD 386	13-4-7	2	(5/16" UNF HALF)
	10 " " PIP PIN	TD 151	23-2-15	2	(5/16" x 1/2" LONG)
②	11				
②	12 NOSE MOUNTING DZUS FASTENER	TD 155	23-1-1	2	
	13 " " " WIRE		23-1-1	2	
	14 COCKPIT		11-1-3	1	
	15 " PIN		4-15-9	2	
②	16 " DZUS FASTENER AND WIRE			2	
②	17 ROLLOVER BAR COVER	752-12-39	11-1-5	1	
②	18 " " " TOP BODY PLATE	75R-01-23	3-14-2	1	
	19 " " "SIDE BODY PLATE		3-14-3	2	
	20 " " "REAR COVER BOLT	TD 532		2	(1/4" UNF x 1" BH)
	21 " " " " LOCKNUT	TD 385	13-4-6	2	(1/4" UNF HALF)
	22 REAR ENGINE COVER		11-1-11	1	
	23 " " " DZUS FASTENER			3	
	24 " " " DZUS WIRE			3	
	25 REAR WING	752-12-10	3-6-12	1	
	26 " " P FLAP (3" WIDTH)		3-14-4	1	
	27 " " " BOLT	TD 529	12-2-14	5	(2BA x 1/2" BH)
	28 " " " NYLOC NUT	TD 410		5	(2BA FULL)
	29 REAR WING POST	732-12-05	4-4-1	1	
	30 " " " BOLT	TD 205	12-3-3	1	(1/4" UNF x 1 1/2" CH)
	31 " " " NYLOC NUT	TD 378	12-3-1	1	(1/4" UNF FULL)
	32 " " " WING BOLT	TD 203	12-3-1	1	(1/4" UNF x 1" CH)
	33 " " " NYLOC NUT	TD 378	13-3-1	1	(1/4" UNF FULL)
	34 " " TRAILING EDGE SUPPORT	742-12-37	1-5-10	1	
	35 " " " EDGE SUPPORT META- LASTIC BUSH			4	
	36 REAR WING TRAILING EDGE SUPPORT TOP BOLT			2	

BODYWORK, WINGS ETC. - 75B

ISSUE	SIGNATURE	DATE
1	JR Heloyd	18-4-75

SHEET 2 OF 2

SECTION N4

Item	Ref. No.	Matrix	No. Off	Detail
37 REAR WING TRAILING EDGE SUPPORT TOP NYLOC NUT			2	
38 REAR WING TRAILING EDGE SUPPORT BOTTOM BOLT			2	
39 REAR WING TRAILING EDGE SUPPORT BOTTOM NYLOC NUT			2	
40 WING FRAME	75B-01-02	1-5-3	1	
41 " " CLEVIS BOLT	TD 230	12-5-3	2	($\frac{3}{16}$ " UNF x 1 $\frac{1}{4}$ " CH)
42 " " " WASHER	TD 324	20-1-8	2	($\frac{3}{16}$ " T & C)
43 " " " NYLOC NUT	TD 380	13-3-3	2	($\frac{3}{16}$ " UNF FULL)
44 " " TO END COVER BOLT	TD 233	12-5-6	2	($\frac{3}{16}$ " UNF x 2" CH)
45 " " " " " WASHER	TD 324	20-1-8	2	($\frac{3}{16}$ " T & C)
46 " " " " " SPRING WASHER	TD 336	20-1-13	2	($\frac{3}{8}$ " SQ. SEC.)
47 CRUSHABLE SIDE POD LH		11-2-13	1	
48 " " " RH		11-2-13	1	
49 " " " JOGGLED STRIP	75B-12-02	3-2-11	2	
50 MIRROR	TD 422	8-4-3	2	
51 MIRROR MOUNT	753-17-01	3-7-5	2	
52 W FLAP LH	741-12-29	2-5-15	1	(OPTIONAL EXTRA)
53 RH	741-12-28	2-5-14	1	(ONLY)
54 MARCH SETTING UP MANUAL		8-10-15	1	
55 MARCH SEW-ON BADGE		8-8-3	2	
56 REAR ENGINE COVER MOUNTING PLATE			1	
57 REAR WING TRAILING EDGE SUPPORT TOP WASHER			2	
58 " " " EDGE SUPPORT BOTTOM WASHER			2	
59 MIRROR MOUNT BOLT			6	
60 " " NYLOC NUT			6	