

FRONT SUSPENSION - 75S2

SHEET 1 OF 2

ISSUE	SIGNATURE	DATE
1	<i>R. Holroyd</i>	18-4-75

SECTION B5

Item	Ref. No.	Matrix	No. Off	Detail
1 FRONT TOP WISHBONE LH	74S-02-01	1-3-11	1	
2 " " " RH	74S-02-02	1-3-12	1	
3 FRONT BOTTOM WISHBONE LH	73S-02-01	1-3-9	1	
4 " " " RH	73S-02-02	1-3-10	1	
5 FORWARD FRONT SUSPENSION STRUT - LH	712-01-09	1-4-5	1	
6 " " " " RH	712-01-10	1-4-6	1	
7 " " " " BOLT	TD 231	12-5-4	2	($\frac{3}{8}$ "UNF x $1\frac{1}{2}$ "CH)
8 " " " " PLAIN WASHER	TD 324	20-1-8	2	($\frac{3}{8}$ "T & C)
9 " " " " NYLOC NUT	TD 380	13-3-3	2	($\frac{3}{8}$ "UNF FULL)
10 REARWRD FRONT SUSPENSION STRUT	712-01-08	1-4-3	2	
11 " " " " BOLT	TD 228	12-5-1	2	($\frac{3}{8}$ "UNF x $\frac{3}{4}$ "CH)
12 " " " " Spring Washer	TD 336	20-1-13	2	($\frac{3}{8}$ "sq. sec)
13 FTWB DOUBLE SHEAR BRACKET	712-01-15	1-1-5	2	
14 " " " " SPACER	712-02-08	4-2-7	2	$\frac{1}{2}$ " LENGTH)
15 " " " " BOLT	TD 234	12-5-7	2	($\frac{3}{8}$ "UNF x $2\frac{1}{4}$ "CH)
16 " " " " PLAIN WASHER	TD 324	20-1-8	6	($\frac{3}{8}$ "T & C)
17 " " " " NYLOC NUT	TD 380	13-3-3	2	($\frac{3}{8}$ "UNF FULL)
18 " " " " BOLT	TD 220	12-4-7	2	(5/16"UNF x 2"CH)
19 " " " " PLAIN WASHER	TD 323	20-1-7	2	(5/16 T&C)
20 " " " " NYLOC NUT	TD 379	13-3-2	2	(5/16" UNF FULL)
21 FTWB REAR FIXING BOLT	TD 233	12-5-6	2	($\frac{3}{8}$ "UNF x 2"CH)
22 " " " " SPACER	712-02-08	4-2-7	2	($\frac{1}{2}$ " LENGTH)
23 " " " " PLAIN WASHER	TD 324	20-1-8	4	($\frac{3}{8}$ "T & C)
24 FBWB SPACER	732-02-06	4-2-10	2	
FBWB THROUGH BOLT	722-02-12	4-5-6	2	
26 FBWB THROUGH BOLT PLAIN WASHER	TD 324	20-1-8	2	($\frac{3}{8}$ "T & C)
27 FWB BEARING JOURNAL	732-02-07	4-2-5	4	
28 FBWB INNER BRG BUSH (DELFIN)	722-02-07	4-5-8	4	
29 THRUST WASHER(722-02-08	4-2-6	4	
30 FTWB SLEEVE NUT	703-03-05	4-2-9	2	
31 FTWB INNER ROSE JOINT LOCKNUT	TD 389	13-4-10	4	($\frac{1}{2}$ "UNF HALF)
32 " OUTER " " " "	TD 390	13-4-11	2	(5/8"UNF HALF)
33 FBWB OUTER ROSE JOINT CIRCLIP	TD 119	8-2-8	2	
34 FRONT DAMPER	TD 200	16-1-10	2	(1133B SP3)(KONI)
35 " " INSERT	712-02-09	4-2-12	8	
36 " " TOP BOLT	TD 237	12-5-10	2	($\frac{3}{8}$ "UNF x 3"CH)

ISSUE	SIGNATURE	DATE
1	JR Howard	18-4-75

SECTION B5

Item	Ref. No.	Matrix	No. Off	Detail
38 FRONT DAMPER BOTTOM BOLT	TD 233	12-5-6	2	($\frac{3}{8}$ "UNF x 2"CH)
39 " " BOTTOM NYLOC NUT	TD 380	13-3-3	2	($\frac{3}{8}$ "UNF FULL)
40 FRONT SPRING	TD 451	16-1-5	2	(7" x 400 lb)
41 TYRAP - LARGE	TD 195	8-3-15	2	
42 STEERING RACK ASSEMBLY	735-04-16	4-5-9	1	
43				
44 RENAULT JOINT ASSEMBLY	TD 158	15-1-5	2	
45 " " SPLIT PIN	TD 43	23-1-13	2	($\frac{1}{8}$ " x $1\frac{3}{4}$ ")
46 TRACK ROD	73S-04-03	3-1-6	2	($10\frac{3}{4}$ "LENGTH)
47 " " INNER LOCK NUT	712-04-14	4-5-7	2	(12mm x 1.5mm)
48 " " OUTER LOCK NUT	TD 387	13-4-8	2	($\frac{3}{8}$ "UNF HALF)
49 STEERING ARM PLATE	703-04-15	2-1-3	4	
50 " " SPACER	75B-01-12	4-15-17	4	($\frac{3}{16}$ " LENGTH)
51 " " BOLT	TD 207	12-3-5	4	($\frac{1}{4}$ "UNF x 2"CH)
52 " " NYLOC NUT	TD 378	13-3-1	4	($\frac{1}{4}$ "UNF FULL)
53 " " BOLT	TD 220	12-4-7	2	($\frac{5}{16}$ "UNF x 2"CH)
54 " " PLAIN WASHER	TD 323	20-1-7	2	($\frac{5}{16}$ T & C)
55 " " NYLOC NUT	TD 379	13-3-2	2	$\frac{5}{16}$ "UNF FULL)
56 BUMPSTEER SPACER - THICK	75R-04-02	4-13-5	4	($\frac{3}{8}$ " LENGTH)
57 " " - THIN	712-04-11	4-15-6	2	($\frac{3}{16}$ " LENGTH)
58 FRONT ANTI ROLL BAR	75S-05-01	2-1-12	1	(1" DIA x 14g)
59 FARB MOUNTING	732-05-05	4-2-2	4	(1" ID)
60 " " BOLT	TD 220	12-4-7	2	($\frac{5}{16}$ "UNF x 2"CH)
61 " " PLAIN WASHER	TD 323	20-1-7	4	($\frac{5}{16}$ " T&C)
62 " " NYLOC NUT	TD 379	13-3-2	2	($\frac{5}{16}$ "UNF FULL)
63 " " BOLT	TD 225	12-4-13	2	($\frac{5}{16}$ "UNF x $3\frac{1}{2}$ "CH)
64 " " PLAIN WASHER	TD 323	20-1-7	4	($\frac{5}{16}$ " T & C)
65 " " NYLOC NUT	TD 379	13-3-2	2	($\frac{5}{16}$ " UNF FULL)
66 FARB CLAMP	72X-05-19	1-2-9	2	(1" ID)
67 " " BOLT			2	($\frac{1}{4}$ "UNF x $1\frac{1}{4}$ "CH)
68 " " NYLOC NUT	TD 378	13-3-1	2	+ " UNF FULL)
69 FARB LINK	732-05-01	1-2-11	2	($3\frac{7}{8}$ " LENGTH)
70 " " TOP BOLT			2	($\frac{5}{16}$ " UNF x 1"CH)
71 " " TOP NYLOC NUT	TD 379	13-3-2	2	($\frac{5}{16}$ " UNF FULL)
72 " " BOTTOM BOLT	TD 219	12-4-6	2	($\frac{5}{16}$ "UNF x $1\frac{3}{4}$ "CH)
73 " " BOTTOM NYLOC NUT	TD 379	13-3-2	2	($\frac{5}{16}$ " UNF FULL)
74 " " ROSE JOINT LOCK NUT	TD 386	13-4-7	4	($\frac{5}{16}$ " UNF HALF)

SPHERICAL BEARINGS - 75S2

ISSUE	SIGNATURE	DATE
1	JPHelwood	18-4-75

SECTION K5

Item	Ref. No.	Matrix	No. Off	Detail
1 FRONT TOP WISHBONE OUTER	TD 45	15-1-2	2	(RBJ 76 GU)
2 " " " INNER	TD 52	15-1-14	4	(RC 6E)
3 FRONT BOTTOM WISHBONE OUTER	TD 46	15-1-3	2	(RSTWR 12)
4 TRACK ROD OUTER	TD 47	15-1-4	2	(RBJ 341)
5 ANTI-ROLL BAR LINK	TD 49	15-1-11	8	(RMP 5U)
6 RADIUS ARM	TD 51	15-1-13	8	(RC 6H)
7 TOP LINK INNER	TD 52	15-1-14	2	(RC 6E)
8 TOP LINK OUTER	TD 53	15-1-15	2	(RCL 8H)
9 BOTTOM LINK INNER	TD 54	15-2-1	4	(RC 8H)
10 BOTTOM LINK OUTER	TD 53	15-1-15	4	(RCL 8H)
11 GEAR LINKAGE FRONT SUPPORT	TD 82	15-2-10	1	(RBJ 343)
12 GEAR LINKAGE CENTRE SUPPORT	TD 55	15-2-2	1	(RMP 8U)
13 GEAR LINKAGE REAR SUPPORT	TD 55	15-2-2	1	(RMP 8U)
14 THROTTLE CABLE FRONT SUPPORT	TD 17	15-1-1	1	(RMP 4U)
15 DOOR HINGE ROD	TD 17	15-1-1	3	(RMP 4U)

ISSUE	SIGNATURE	DATE
1	JRHolroyd	18-4-75

SECTION I11

Item	Ref. No.	Matrix	No. Off	Detail
1 RADIATOR LH (WATER ONLY)	75S-13-01	27-1-11	1	
2 " RH (WATER/OIL)	75S-13-02	27-1-12	1	
3 " 90° RUBBER HOSE		8-6-12	4	(1¼" I.D.)
4 " " " HOSE JUBILEE CLIP	TD 725	25-1-8	4	(28 - 41mm SIZE)
5 " MOUNTING BOLT	75S-13-11	4-17-7	2	
6 " " SPACER - TOP	75S-13-08	4-17-8	2	
7 " " SPACER - CENTRE	75S-13-09	4-17-9	2	
8 " " SPACER - BOTTOM	75S-13-10	4-17-10	2	
9 " STONEGUARD	75S-13-06	2-4-3	2	
10 " DUCT LH	75S-13-15	3-8-9	1	
11 " " RH	75S-13-16	3-8-10	1	
12 " " " BOLT	TD 207	12-3-5	4	(¼" UNF x 2" CH)
13 " " " WASHER	TD 322	20-1-6	8	(¼" T & C)
14 " " " NYLOC NUT	TD 378	13-3-1	4	(¼" UNF FULL)
15 CROSS OVER WATER PIPE	75S-13-18	2-4-12	1	
16 " " " " BLEED ADAPTOR	732-06-18	4-8-7	1	
17 " " " " " " "				
	TD 689	20-2-14	1	(⅜")
18 " " " " BLEED ADAPTOR STRAIGHT UNION	TD 541	6-5-12	2	(⅛" BSP SIZE)
19 COP/HT NYLON BLEED PIPE (30" LENGTH)	TD 542	8-8-5	1	(5/32" I.D. NYLON)
20 HEADER TANK	75S-13-03	2-3-3	1	
21 " " BRACKET LH	75S-13-04	3-9-1	1	
22 " " " RH	75S-13-05	3-9-2	1	
23 " " CAP	TD 72	8-6-11	1	
24 SWIRL POT	75S-13-17	2-3-8	1	
25 WATER PIPE (WITH TAKE-OFF)	75S-13-20	2-4-13	1	(PUMP TO RAD)
26 " " RUBBER HOSE (3" LENGTH)	TD 753	8-4-7	1	(1¼" I.D.)
27 WATER PIPE	75S-13-19	2-4-14	1	(SWIRL POT TO RADIATOR)
28 " " RUBBER HOSE (3" LENGTH)	TD 753	8-4-7	1	(1¼" I.D.)
29 90° RUBBER HOSE		8-6-12	1	(1¼" I.D.)
30 JUBILEE CLIP (28-41mm SIZE)	TD 725	25-1-8	7	
31 " " (38-54mm SIZE)	TD 727	25-1-10	5	
32 " " (2A SIZE)	TD 726	25-1-9	1	
33 " " (NO 1 SIZE)	TD 724	25-1-7	2	
34 NYLON BLEED PIPE (22" LENGTH)	TD 542	8-8-5	1	(5/32" I.D. NYLON)
35 " " " STRAIGHT UNION	TD 541	8-5-12	2	(⅛" BSP SIZE)

ISSUE	SIGNATURE	DATE
1	JRHolroyd	18-4-75

SECTION I11

Item	Ref. No.	Matrix	No. Off	Detail
38 WATER HOUSING BLEED ADAPTOR	75S-13-07	4-15-2	1	
39 RUBBER HOSE (2" LENGTH)	TD 751	8-7-2	1	(1" I.D.)
40 RUBBER HOSE (28" LENGTH)	TD 745	8-8-6	1	(5/16" I.D.)
41 " " PINCH CLIP	TD 722	25-1-5	2	(19-25mm SIZE)
42 " " (3" LENGTH)	TD 754	8-8-7	1	(1 ³ / ₈ " I.D.)
43 " " (28" LENGTH)	TD 748	9-7-10	1	(⁵ / ₈ " I.D.)
44 JUBILEE CLIP (19-25 mm SIZE)	TD 722	25-1-5	2	(19-25mm SIZE)

ENGINE INSTALLATION - 75S2 BMW

SHEET 1 OF 4

ISSUE	SIGNATURE	DATE
1	JRHowe	18-4-75

SECTION F11

Item	Ref. No.	Matrix	No. Off	Detail
1			1	
ENGINE (NORMALLY SUPPLIED BY CUSTOMER)				
2			1	
" SIDEFAME LH	752-01-31A	1-4-12		
3			1	
" " RH	752-01-32A	1-4-13		
4			2	
" " FRONT TOP MOUNTING STUD	75S-01-30	4-21-4		
5			2	($\frac{1}{2}$ " T & C)
" " " MOUNTING WASHER	TD 326	20-1-10		
6			2	($\frac{1}{2}$ " UNF FULL)
" " " MOUNTING NYLOC NUT	TD 382	13-3-5		
7			2	
" " FRONT BOTTOM MOUNTING BOLT				
8			2	
" " FRONT BOTTOM MOUNTING WASHER				
9			1	
" 'A' FRAME LH	752-01-31B	2-2-10		
10			1	
" " " RH	752-01-32B	2-2-11		
11			4	
" " " ENGINE MOUNTING BOLT				
12			4	
" " " MOUNTING SPRING WASHER				
13			2	
" " " SIDEFAME MOUNTING BOLT				
14			2	
" " " SIDEFAME MOUNTING WASHER				
15			2	
" " " SIDEFAME MOUNTING NYLOC NUT				
16			1	
ENGINE TOP DOUBLE SHEAR PLATE	752-16-04	3-5-2		
17			1	
" BOTTOM DOUBLE SHEAR PLATE	752-16-05	3-5-1		
18			1	
" BRACE LH		2-2-12		
19			1	
" " RH				
20			2	($\frac{3}{8}$ " UNF x 1 $\frac{1}{2}$ " CH)
" " REAR MOUNTING BOLT	TD 231			
21			4	($\frac{3}{8}$ " T & C)
" " " WASHER	TD 324			
22			2	($\frac{3}{8}$ " UNF FULL)
" " " NYLOC NUT	TD 380			
23			1	
" ADAPTOR PLATE	732-16-14			
24			2	
" " " DOWEL	742-16-07			
25			5	(8mm x 35mm HH)
" " " BOLT	TD 845	12-17-2		
26			5	(5/15" T & C)
" " " WASHER	TD 323	20-1-7		
27			5	(5/16" SQ. SEC.)
" " " SPRING WASHER	TD 335	20-1-12		
28			2	(10mm x 65mm HH)
" " " BOLT	TD 866	12-17-11		
29			1	(10mm x 75mm HH)
" " " BOLT	TD 868	12-18-3		

ENGINE INSTALLATION - 75S2 BMW

SHEET 2 OF 4

ISSUE	SIGNATURE	DATE
1	JPHolwayd	18-4-75

SECTION F11

Item	Ref. No.	Matrix	No. Off	Detail
30 ENGINE ADAPTOR PLATE WASHER	TD 324	20-1-8	3	($\frac{3}{8}$ " T & C)
31 " " " SPRING WASHER	TD 336	20-1-13	3	($\frac{3}{8}$ " SQ. SEC.)
32 ENGINE STARTER MOTOR (NORMALLY SUPPLIED WITH ENGINE)			1	(BOSCH)
33 ENGINE STARTER MOTOR MOUNTING BOLT	TD 591	12-13-8	1	($\frac{3}{8}$ " UNF x 3" HH)
34 " " " MOUNTING WASHER	TD 324	20-1-8	2	($\frac{3}{8}$ " T & C)
35 " " " " NYLOC NUT	TD 380	13-3-3	1	($\frac{3}{8}$ " UNF FULL)
36 REAR CROSSMEMBER	752-01-40	3-4-9	1	
37 " " /SIDEFRAME MOUNTING BOLT			2	
38 " " " " NUT			2	
39 " " STRUT LH	732-01-54	3-4-11	1	
40 " " " RH	732-01-03	3-4-10	1	
41 " " " TOP BOLT			2	
42 " " " " NUT			2	
43 " " " BOTTOM BOLT			2	
44 " " " "SPRING WASHER			2	
45 " " GEARBOX SPACER	702-16-03	4-20-13	2	
46 LINK ANCHOR PLATE	732-01-58	4-3-12	1	
47 " " " BOLT			4	
48 " " " WASHER			4	
49 " " " THROUGH BOLT	742-01-10	4-6-13	2	
50 " " " " NUT			2	
51 " " " FORWARD DOUBLE SHEAR BRACKET	75S-01-54	3-12-9	1	
52 LINK ANCHOR PLATE FORWARD DOUBLE SHEAR BRACKET BOLT				
53 LINK ANCHOR PLATE FORWARD DOUBLE SHEAR BRACKET WASHER				
54 LINK ANCHOR PLATE FORWARD DOUBLE SHEAR BRACKET SPRING WASHER				
55 LINK ANCHOR PLATE REARWARD DOUBLE SHEAR BRACKET	752-01-64	3-12-10	1	
56 LINK ANCHOR PLATE REARWARD DOUBLE SHEAR BRACKET BOLT				
57 LINK ANCHOR PLATE REARWARD DOUBLE SHEAR BRACKET WASHER				
58 LINK ANCHOR PLATE REARWARD DOUBLE SHEAR BRACKET SPRING WASHER				
59 REAR SKID	73S-01-25	6-1-12	1	

ENGINE INSTALLATION - 75S2 BMW

SHEET 3 OF 4

ISSUE	SIGNATURE	DATE
1	JPHolwayd	18-9-75

SECTION F11

Item	Ref. No.	Matrix	No. Off	Detail
61 ENGINE FLYWHEEL STONEGUARD	73S-16-05	1-1-13	1	
62 " " " BOLT			2	
63 " " " WASHER			2	
ENGINE EXHAUST SYSTEM		24-1-4	1	
64 COMPRISES: PRIMARY PIPE			4	
65 TAIL PIPE			1	
66 " " SPLIT PIN			2	
67 ENGINE EXHAUST FLANGE NUT		13-2-9	16	
68 " " BRACKET	75S-01-50	3-9-14	1	
69 " " " BOLT			2	
70 " " " SPRING WASHER			2	
71 " " " JUBILEE CLIP			1	
72 GEARBOX INPUT SHAFT	TD 166	18-1-11	1	(FG 400- BMW)
73 " " " CIRCLIP	TD 103	18-2-6	1	
74 " CLUTCH BOBBIN	73B-16-01	4-21-3	1	
ENGINE THROTTLE CABLE ASSEMBLY				
75 COMPRISES: PEDAL CLEVIS	TD 35	8-2-6	1	
76 " " WASHER			1	
77 " " SPLIT PIN	TD 40	8-2-10	1	(1/16"DIA. x 1" LONG)
78 SOLDER-ON NIPPLE	TD 34	8-2-5	1	
79 INNER CABLE	TD 31	8-2-2	1	
80 CABLE ADJUSTER	TD 32	8-2-3	1	
81 FERRULE	TD 33	8-2-4	1	
82 INNER CABLE LINER	TD 37		1	
83 OUTER CABLE	TD 30	8-2-1	1	
84 FERRULE	TD 33	8-2-4	1	
85 CABLE ADJUSTER	TD 32	8-2-3	1	
86 " " REAR SUPPORT BRACKET		3-12-11	1	
87 " " " "BRACKET BOLT				
88 " " " " " WASHER				
89 SOLDER-ON NIPPLE	TD 34	8-2-5	1	
90 TACHOMETER	TD 61	8-3-2	1	(0-12000 RPM)
91 " DRIVE (84" LENGTH)	TD 64	8-3-3	1	
92 GAUGE (OIL PRESSURE/OIL TEMP.)	TD 67	8-3-5	1	(10FT CAPILLARY)

ENGINE INSTALLATION - 75S2 BMW

ISSUE	SIGNATURE	DATE
1	JPHolroyd	18-4-75

SHEET 4 OF 4

SECTION F11

Item	Ref. No.	Matrix	No. Off	Detail
OIL PRESSURE LINE ASSEMBLY			1	
COMPRISES:				
93 UNION	TD 705	8-4-10	1	($\frac{1}{8}$ " BSP 90°)
94 HOSE	TD 704	8-4-9	1	($\frac{1}{8}$ " I.D.)
95 UNION	TD 705	8-4-10	1	($\frac{1}{8}$ " BSP 90°)
96 GAUGE (FUEL PRESSURE/WATER TEMP.)	TD 67	8-3-5	1	(10FT CAPELLARY)
FUEL PRESSURE LINE ASSEMBLY			1	
COMPRISES:				
97 UNION	TD 705	8-4-10	1	($\frac{1}{8}$ " BSP 90°)
98 HOSE	TD 704	8-4-9	1	($\frac{1}{8}$ " I.D.)
99 UNION	TD 705	8-4-10	1	($\frac{1}{8}$ " BSP 90°)

ISSUE	SIGNATURE	DATE
1	JRHolweyd	18-9-75

SECTION J11

Item	Ref. No.	Matrix	No. Off	Detail
*1 FUEL TANK LH	* 75S-15-01	17-1-13	1	*
*2 " " RH	* 75S-15-02	17-1-14	1	*
3 " " BREATHER TUBE LH			1	(ALLOY)
4 " " BREATHER PIPE			1	
5 " " BREATHER TUBE RH			1	(ALLOY)
6 " " BREATHER PIPE			1	
FUEL TOWER ASSEMBLY	75S-15-16		2	
COMPRISES:				
7 FUEL TOWER BODY	75S-15-10	6-2-2	1	
8 NON-RETURN VALVE DISC	75S-15-11	4-11-4	1	
9 SPRING	75S-15-12	8-5-9	1	
10 SPINDLE	75S-15-13	4-11-5	1	
11 BUSH	75S-15-14	4-11-3	1	
12 BEARING BODY	75S-15-15	6-2-3	1	(SPOKED WHEEL)
13 'O' RING	TD 680	8-5-10	1	
14 CIRCLIP	TD 681	23-1-9	1	
15 FUEL TOWER GAUZE	75S-15-30	3-12-3	1	
16 " " MOUNTING WASHER	TD 352	20-2-3	12	(2BA LARGE O.D.)
17 " " " NYLOC NUT	TD 410		12	(2BA FULL)
18 FUEL CROSS-OVER PIPE	75S-15-29	3-12-5	1	
19 " " " " 45° RUBBER HOSE			2	(1½" I.D. to 1¼" I.D.)
20 " " " " JUBILEE CLIP	TD 725	25-1-8	2	(1X SIZE)
21 FUEL TOWER BODY JUBILEE CLIP	TD 727	25-1-10	2	(NO. 2 SIZE)
22 FUEL COLLECTOR POT	73S-15-06	2-2-15	1	
23 " " " JUBILEE CLIP	TD 727	25-1-10	4	(38-54mm SIZE)
24 FUEL PIPE (RH FUEL TANK TO COLLECTOR POT)	75S-15-31	3-12-4	2	(1½" O.D. ALLOY)
25 " " RUBBER HOSE (4" LENGTH)	TD 755	8-4-8	2	(1½" I.D.)
26 " " JUBILEE CLIP	TD 727	25-1-10	4	(38-54mm SIZE)
27 FUEL COLLECTOR POT OUTLET UNION	TD 307	21-1-11	1	(-8 45° AEROQUIP)
28 HOSE COLLECTOR POT TO FUEL FILTER (21" LENGTH)	TD 293	21-2-10	1	(-8 AEROQUIP)
29 FUEL FILTER INLET UNION	TD 314	21-1-12	1	(-8 90° AEROQUIP)
30 " " " ADAPTOR	753-15-07	4-8-15	1	(-8 TO-6 MALE/ MALE)
* ALTERNATIVELY FUEL TANK LH	73S-15-03	17-1-9	1	(MODIFIED TYPE)
" " RH	73S-15-02	17-1-10	1	(MODIFIED TYPE)

ISSUE	SIGNATURE	DATE
1	JPHelroyd	18-4-75

SECTION J11

Item	Ref. No.	Matrix	No. Off	Detail
31 FUEL FILTER INLET END	753-15-03	4-11-8	1	
32 " " ELEMENT		8-10-5	1	
33 " " OUTLET END	753-15-02	4-11-7	1	
34 " " " " CLAMPING BOLT			1	
35 " " " " " WASHER			1	
36 " " " " MOUNTING BOLT			4	
37 " " " " SPRING WASHER			4	
38 " " " BLANKING PLUG	753-15-06	4-8-12	1	(-6 SIZE)
39 " " " BLANKING PLUG	752-17-08	4-19-10	1	(1/8" BSP SIZE)
40 " " " DOWTY WASHER				(1/8" BSP SIZE)
41 " " OUTLET END ADAPTOR	752-15-11	4-8-14	1	(-8 TO -8 MALE/MALE)
42 " " " " UNION	TD 314	21-1-12	1	(-8 90°AEROQUIP)
43 HOSE-FUEL FILTER TO FUEL PUMP (9" LENGTH)	TD 293	21-2-10	1	(-8 AEROQUIP)
44 FUEL PUMP INLET END CAP	752-15-04	4-13-6	1	(-8 SIZE)
45 " " " JUBILEE CLIP	TD 720	25-1-3	1	(00 SIZE)
46 FUEL PUMP (NORMALLY SUPPLIED BY CUSTOMER)		8-10-9	1	(BOSCH)
47 " " MOUNTING BRACKET	752-15-09	3-7-7	1	
48 " " " BOLT	TD 216	12-4-3	2	(5/16"UNF x 1"CH)
49 " " " WASHER	TD 323	20-1-7	1	(5/16" T & C)
50 " " " NYLOC NUT	TD 372	13-3-8	1	(5/16" UNF HALF)
51 " " JUBILEE CLIP	TD 730	25-1-13	1	(50-70mm SIZE)
52 FUEL PUMP OUTLET END CAP	752-15-05	4-16-7	1	(-6 SIZE)
53 " " " JUBILEE CLIP	TD 720	25-1-3	1	(00 SIZE)
54 HOSE-FUEL PUMP TO PANCAKE FILTER (14" LENGTH)	TD 292	21-2-9	1	(-6 AEROQUIP)
55 PANCAKE FILTER INLET UNION	TD 313	21-1-9	1	(-6 90°AEROQUIP)
56 " " " ADAPTOR	752-15-13	4-12-15	1	(-6/-6MALE/MALE)
57 " " " "DOWTY WASHER			1	
PANCAKE FILTER ASSEMBLY			1	
COMPRISES:				
58 FILTER HOUSING	751-15-06	4-11-11	1	
59 " LID	751-15-07	4-11-12	1	
60 " GAUZE	751-15-08	3-2-15	1	
61 " FELT	751-15-09	8-4-12	1	
62 " 'O' RING	TD 288	8-5-1	1	

ISSUE	SIGNATURE	DATE
1	JPHolroyd	18-9-75

SECTION J11

Item	Ref. No.	Matrix	No. Off	Detail
64 PANCAKE FILTER MOUNTING BRACKET	752-15-12	3-8-5	1	
65 " " " " BOLT	TD 215	12-4-2	2	(5/16"UNFx $\frac{3}{4}$ "CH)
66 " " " " NYLOC NUT			2	(5/16"UNF HALF)
67 " " "JUBILEE CLIP	TD 730		1	(NO. 3 SIZE)
68 " " OUTLET ADAPTOR	752-15-10	4-8-13	1	(-6/-6MALE/MALE)
69 " " " DOWTY WASHER			1	
70 " " " UNION	TD 313	21-1-9	1	(-6 90°AEROQUIP)
71 HOSE-PANCAKE FILTER TO METERING UNIT (70" LENGTH)	TD 292	21-2-9	1	(-6 AEROQUIP)
72 METERING UNIT INLET END CAP	752-15-05	4-16-7	1	(-6 SIZE)
73 " " " JUBILEE CLIP	TD 720	25-1-3	1	(00 SIZE)
74 " " " BANJO			1	
75 " " " BANJO BOLT			1	
76 " " " COPPER WASHER			2	
77 METERING UNIT OUTLET ADAPTOR			1	
78 " " " END CAP	752-15-05	4-16-7	1	(-6 SIZE)
79 " " " JUBILEE CLIP	TD 720	25-1-3	1	(00 SIZE)
80 HOSE-METERING UNIT TO COLLECTOR POT (76" LENGTH)	TD 292	21-2-9	1	(-6 AEROQUIP)
81 FUEL COLLECTOR POT INLET UNION	TD 313	21-1-9	1	(-6 90°AEROQUIP)
82 FUEL CROSSOVER PIPE BREATHER PIPE (72" LENGTH)			1	
83 " " " JUBILEE CLIP	TD 718	25-1-1	2	(000 SIZE)
84 " " " BREATHER VALVE	753-15-04	4-11-13	1	
85 FUEL COLLECTOR POT BREATHER PIPE (10" LENGTH)			1	
86 " " " BREATHER JUBILEE CLIP	TD 718	25-1-1	2	(000 SIZE)
87 FUEL COLLECTOR POT BREATHER PIPE (3" LENGTH)			2	
88 " " " BREATHER JUBILEE CLIP	TD 718	25-1-1	4	(000 SIZE)
89 " " " BREATHER VEE			1	(ALLOY)

ISSUE	SIGNATURE	DATE
1	JRHedroyd	18-4-75

SECTION J11

Item	Ref. No.	Matrix	No. Off	Detail
FUEL "QUICK-FILL" VALVE ASSEMBLY	75S-15-17		2	(CUSTOMER OPTION IF REQUESTED)
COMPRISES:				
90 FUEL VALVE BODY	75S-15-18	6-2-6	1	
91 SLEEVE	75S-15-24	4-20-2	1	
92 CONE	75S-15-19	4-20-3	1	
93 CONE SEAT	75S-15-23	4-20-4	1	
94 SPINDLE	75S-15-21	4-20-5	1	
95 SPINDLE NUT	TD 761		1	
96 LOCK PIN	TD 762	23-2-2	1	
97 CONE 'O' RING	TD 763	8-10-10	1	
98 CONE SEAT 'O' RING	TD 764	8-10-11	1	
99 SLEEVE LIP SEAL	TD 765	8-10-12	1	
100 SPRING				
101 HANDLE SUB-ASSEMBLY	75S-15-22	3-12-6	2	
102 HANDLE BOLT	TD 766	12-7-8	4	($\frac{1}{4}$ "BSF x $\frac{1}{2}$ "BH)
103 PLASTIC FUEL CHURN			1	

75S/2 BMW loose parts check list

SECTION P5

Item Ref. No. Matrix No. Off

ADAPTOR PLATE BOLT (10mm x 50mm HH)	TD		3
" " " (8mm x 45mm HH)	TD		5
" " " (3/8" UNF x 3" HH)	TD		1
" " NYLOC NUT (3/8" UNF HALF)	TD		1
" " WASHER (3/8" T&C)	TD		1
BOTTOM ENGINE MOUNTING BOLT (6mm x 75mm HH)	TD		2
" " " SPRING WASHER (5/16 sq sec)	TD TD		2
" " " WASHER (5/16 T&C)	TD		2
TOP ENGINE MOUNTING BOLT (3/8" UNF X 4" HH)	TD		2
" " " SPRING WASHER (3/8" SQ. SEC)	TD		2
" " " WASHER (3/8" T&C)	TD		2
ENGINE DOUBLE SHEAR PLATE - TOP	752		
ENGINE DOUBLE SHEAR PLATE - BOTTOM		752-16-05	1
TEMP. SENDER COPPER WASHER TD	TD		2
THROTTLE CABLE BULLET END	TD		1
THROTTLE CABLE ADJUSTER	TD		1
THROTTLE CABLE LOCKNUT	TD		2
THROTTLE CABLE FERRULE	TD		1
TACHO CABLE SPADE	TD		1
1/8" ID CLEAR PLASTIC HOSE (18" length)	TD		1
1/2" ID " " " (66" length)	TD		1
JUBILEE CLIP (SIZE 38-54 mm)	TD		5
" " (SIZE 28-41 mm)	TD		7
" " (SIZE 2A)	TD		1
" " (SIZE NO. 1)	TD		2
5 WAY LUCAS CONNECTOR ASSY MALE/FEMALE	TD		1
3 WAY BOSCH FEMALE CONNECTOR	TD		1
COIL MOUNTING	TD		1

EXHAUST MOUNTING

COMPRISES: PRIMARIES			4
TAIL PIPE			1
SPLIT PIN			2
EXHAUST BRACKET			1

(Oil tank
Breather
(Engine
Breather)

75S/2 BMW LOOSE PARTS CHECK LIST

SECTION P5

Item	Ref. No.	Matrix	No. Off
HEEL REST			1
90° RUBBER HOSE	TD		1
SP/HT NYLON BLEED PIPE (LENGTH 20")	TD		1
BLEED PIPE STRAIGHT UNION	TD		2
CH/HT NYLON BLEED PIPE (LENGTH 14")	TD		1
BLEED PIPE STRAIGHT UNION	TD		2
WATER HOUSING BLEED ADAPTOR	75S-13-07		1
1" ID RUBBER HOSE (LENGTH 2")	TD		1
-16 AEROQUIP HOSE (LENGTH 34")	TD		2
C/W -16 90° UNIONS	TD		4
-16 AEROQUIP HOSE (LENGTH 15")	TD		1
C/W -16 90° UNION	TD		1
-16 45° UNION	TD		1
OIL PUMP FLANGED ADAPTOR	732-14-02		1
" " METRIC /-16 ADAPTOR	752-14-03		1
FRONT WHEEL 13 x 10 CAST	703-09-03		2
FRONT TYRE	TD		2
WHEEL WASHER	712-07-10		2
REAR WHEEL 13 x 15 COMPOSITE	752-09-04		2
REAR TYRE	TD		2
WHEEL WASHER	712-07-10		2
WHEEL NUT	TD16		4
SWIRL POT	75S-13-17		1
BATTERY CABLE (length 5'1)	TD 626		1
-8 AEROQUIP END CAP	752-15-04		1
-6 AEROQUIP END CAP	752-15-05		3

($\frac{3}{4}$ UNF FULL)

I confirm that I have received the above chassis number as ordered and I have checked that the loose parts listed on the 2 sheets herewith are packed together with it.

Signed by Customers Rep/Carrier
 BLOCK CAPITALS:
 DATE:

NB File original with kit list - give customer photostat.

ISSUE	SIGNATURE	DATE
1	JRHolroyd	18-4-75

SECTION H11

Item	Ref. No.	Matrix	No. Off	Detail
1 OIL TANK	75S-14-01	3-6-4	1	
2 " " MOUNTING BRACKET LH	75S-14-06	3-8-7	1	
3 " " " " RH	75S-14-05	3-8-6	1	
4 " " " " BOLT			4	
5 " " " " SPRING WASHER			4	
6 " " MOUNTING RUBBER			4	
7 " " " " WASHER			4	
8 " " " " NYLOC NUT			4	
9 " " DRAIN PLUG		8-9-15	1	
10 " " " " DOWTY WASHER			1	
11 " " CAP	742-14-03	4-6-4	1	
12 " " " 'O' RING	TD 70	8-8-9	1	
13 OIL TANK OUTLET UNION	TD 310	21-2-5	1	(-16 45° AEROQUIP)
14 HOSE-OIL TANK TO OIL PUMP (20" LENGTH)	TD 296	21-2-13	1	(-16 AEROQUIP)
15 OIL PUMP INLET UNION	TD 317	21-2-6	1	(-16 90° AEROQUIP)
16 " " " ADAPTOR	752-14-03	4-12-5	1	(METRIC/-16)
17 " " OUTLET ADAPTOR	732-14-02	4-12-4	1	(FLANGE/-16)
18 " " " UNION	TD 317	21-2-6	1	(-16 90° AEROQUIP)
19 HOSE-OIL PUMP TO OIL RADIATOR (30" LENGTH)	TD 296	21-2-3	1	(-16 AEROQUIP)
20 OIL RADIATOR INLET UNION	TD 317	21-2-6	1	(-16 90° AEROQUIP)
21 " " OUTLET UNION	TD 317	21-2-6	1	(-16 90° AEROQUIP)
22 HOSE-OIL RADIATOR TO OIL TANK (33" LENGTH)	TD 296	21-2-13	1	(-16 AEROQUIP)
23 OIL TANK INLET UNION	TD 317	21-2-6	1	(-16 90° AEROQUIP)
24 " " BREATHER PIPE (20" LENGTH)	TD 741	8-7-15	1	(7/8" I.D. CLEAR PLASTIC)
25 " " " " PINCH CLIP			1	
26 BREATHER BOTTLE	TD 420	8-4-1	1	
27 " " BRACKET	TD 421	8-4-2	1	
28 " " " BOLT	TD 529	12-2-14	4	(2BA x 1/2" BH)
29 " " " NYLOC NUT	TD 410		4	(2BA FULL)
30 " " " MOUNTING BRACKET	75S-01-47	3-10-15	1	

ISSUE	SIGNATURE	DATE
1	JRHoyd	18-4-75

SECTION H11

Item	Ref. No.	Matrix	No. Off	Detail
31 BREATHER BOTTLE BRACKET MOUNTING BRACKET BOLT			4	
32 BREATHER BOTTLE BRACKET MOUNTING BRACKET WASHER			4	
33 BREATHER BOTTLE BRACKET MOUNTING BRACKET NYLOC NUT			4	
34 ENGINE BREATHER PIPE (70"LENGTH)	TD 738	8-7-8	1	(1/2" I.D. CLEAR PLASTIC)
35 " " " JUBILEE CLIP			1	

ISSUE	SIGNATURE	DATE
1	JRHolroyd	18-4-75

SHEET 1 OF 3

SECTION M6

Item	Ref. No.	Matrix	No. Off	Detail
1 BATTERY	TD 124		1	
2 BATTERY LEAD - BATTERY TO STARTER MOTOR (LENGTH)	TD 626		1	(FEPSIL 2)
3 BATTERY LEAD - BATTERY TO MASTER SWITCH (LENGTH)	TD 626		1	(FEPSIL 2)
4 BATTERY LEAD - MASTER SWITCH TO ROLL OVER BAR (LENGTH)	TD 626		1	(FEPSIL 2)
5 BATTERY LEAD TERMINAL			6	
6 BATTERY TRAY	75S-01-40	3-9-10	1	
7 " " BOLT			4	($\frac{1}{2}$ " UNF x CH)
8 " " WASHER	TD 322	20-1-6	4	($\frac{1}{2}$ " T & C)
9 BATTERY CLIP	75S-01-49	3-13-12	1	
10 " " SPRING	TD	23-2-1	1	
11 " " " BOLT				
12 BATTERY TRAY BRACKET				
13 " " " BOLT				
14 " " " NUT				
15 MASTER SWITCH ASSEMBLY			1	
Comprises:				
16 BODY	TD 428	9-1-15	1	
17 SHAFT	75R-28-01	4-12-12	1	
18 LEVER	75R-28-02	1-4-4	1	
19 NYLON BUSH	75R-28-03	4-12-13	1	
20 MOUNTING BOLT			2	
21 " WASHER			2	
22 " SPACER			2	
23 " NYLOC NUT			2	
24 LABEL			1	(Red and blue)
25 SPARK BOX	752-28-02	3-13-13	1	
26 " " COVER	752-28-02	3-13-13	1	
27 " " " BOLT			3	
28 " " METALASTIC BUSH			4	
29 " " " "			4	
30 NYLOC NUT			4	
30 SPARK BOX METALASTIC BUSH WASHER			4	
31 " " MOUNTING PLATE	752-28-01	3-13-14	1	
32 " " MOUNTING BLOCK	732-05-05	4-2-2	6	(1" ID)
33 " " " " BOLT			6	

ISSUE	SIGNATURE	DATE
1	J. Holroyd	18-4-75.

SHEET 2 OF 3

SECTION M6

Item	Ref. No.	Matrix	No. Off	Detail
34			6	
35			6	
36	75S-28-02	4-14-15	4	
37			2	
38			2	
39			2	
40				
41			1	(LUCAS)
42			1	(")
43			1	(LUCAS)
44			1	(")
45	TD	9-4-1	1	(Bosch)
46	TD	9-4-2	1	(BOSCH)
47	TD	9-4-3	1	
48			1	(LUCAS)
49			1	(LUCAS)
50	TD 427	9-1-13	1	(LUCAS)
51	TD 427	9-1-13	1	(LUCAS)
52	TD 427	9-1-13	1	(")
53	TD 427	9-1-13	1	(LUCAS)
54	TD 425	9-1-14	1	(LUCAS)
55	TD 426	9-1-12	1	(NSF)
56	TD 274	9-1-2	1	
57	TD	9-4-4	1	
58	TD	9-4-5	1	
59	TD	9-3-15	1	
60	TD	9-4-6	1	(30lb PRESSURE)
61	TD	9-4-7	1	
62	TD	9-4-8	1	
63	TD		2	

ISSUE	SIGNATURE	DATE
1	J. Helroyd	18-4-75.

SECTION M6

Item	Ref. No.	Matrix	No. Off	Detail
64 FUSE BOX WASHER	TD		2	
65 HEADLIGHT	TD	9-4-9	2	
66 REAR LIGHT LH	TD 627	9-2-4	1	
67 REAR LIGHT RH	TD 627	9-2-4	1	
68 " ' BULB	TD	9-4-10	2	
69 " " BRAKE BULB	TD	9-4-11	2	
70 " " INDICATOR BULB	TD	9-4-12	2	
71 INDICATOR FLASHER UNIT	TD	9-4-13	1	

KIT LISTS

SECTION F

(ENGINE INSTALLATION KIT)

- ✓ F5 = 753 PINTO NON STOCK
- ✓ F6 = 753 TOYOTA CL
- ✓ F7 = 752 BMW JC
- F8 = 752 BDG JC
- F9 = 752 ALI. HART (50B) 5 JC
- F10 = 75S2BDG JC
- F11 = 751 DFV CL
- ✓ F12 = 75R RENAULT 6 CL
- ✓ F13 = 75S2BMW JC
- ✓ F14 = 75S2NEW HART JC
- F15 = 75B BDA (ATLANTIC-CARBS) JC
- F16 = 753 BMW

MIN

(F10)

SECTION (F) ENGINE INSTALLATION KIT (BDG) 75S2

ITEM	PART NO	NO. OFF PER ASSY.	PROD. RELEASE DATE	
GEARBOX INPUT SHAFT (FG400-BDG)	TD 100	1	12 NOV 74 JRH	
TACHOMETER (12000)	TD 61	1		
GAUGE - OIL PRESS / TEMP		1		
GAUGE FUEL PRESS / TEMP.		1		
TACHOMETER DRIVE		1		
<u>FUEL PRESSURE LINE ASSY</u>				
COMPRISES:- UNION	TD	1		
HOSE - 1/8" BLACK TEFLON	LEMIT TD		in.	
UNION	TD	1		
<u>OIL PRESSURE LINE ASSY</u>				
COMPRISES:- UNION	TD	1		
HOSE - 1/8" BLACK TEFLON	LEMIT TD		in.	
UNION	TD	1		
INTERMEDIATE				
CLUTCH BOBBIN		1		
<u>THROTTLE CABLE ASSY</u>	TD 29	1		
COMPRISES CLEVIS PIN SPLIT PIN	TD 40	1	7 AUG 74 JRH	
SOLDERLESS NIPPLE	TD 41	1	7 AUG 74 JRH	
LOCK NUT	TD 42	2	7 AUG 74 JRH	
CABLE OUTER	TD 30		inches	
" INNER	TD 31		inches	
ADJUSTER	TD 32	2	7 AUG 74 JRH	
FERRULE	TD 33	2	7 AUG 74 JRH	
TRUMPET NIPPLE	TD 34	1	7 AUG 74 JRH	
CLEVIS	TD 35	1	7 AUG 74 JRH	
CLEVIS PIN	TD 36	1	7 AUG 74 JRH	
INNER CABLE PLASTIC LINER	TD 37		inches	
BARREL NIPPLE	TD 38	1	7 AUG 74 JRH	
'T' PIECE.	TD 39	1	7 AUG 74 JRH	
STARTER MOTOR (3m/100)	TD. 266	1	26 SEPT 74 JRH	9-1-10
" " BENDIX	TD. 267	1	26 SEPT 74 JRH	9-1-11
LINK ANCHOR PLATE	752-01-50	1	6 SEPT 74 JRH	4-3-13
LINK ANCHOR PLATE SPACER	752-01-35	4		4-0-9
LH SIDE FRAME	752-01-36	1		1-0-10
RH SIDE FRAME		1		3-0-6
PAVLENS STRUTS LH		1		3-0-7
RH		1		5-2-4
ADAPTER PLATE	752-16-03	1		
	752-16-03	1		

HYDRAULICS - 75S-2

SHEET 1 OF 3

ISSUE	SIGNATURE	DATE
1	JRHolroyd	18-4-75

SECTION L6

Item	Ref. No.	Matrix	No. Off	Detail
FRONT BRAKES				
1			1	
2			3	
3	TD 284	7-1-8	1	(0.75" SIZE)
4	752-26-04	4-24-3	1	
5	TD 222		2	(5/16"UNF x 2 1/2"CH)
6	TD 323	20-1-7	4	(5/16" T&C)
7	TD 379	13-3-2	2	(5/16"UNF FULL)
8	TD 689		1	(3/8" THIN)
9	TD 690	7-3-8	1	
10	TD 688		1	(7/16" THIN)
11	TD 691	7-3-5	1	(2 WAY 90°)
12	732-06-18	4-8-7	2	(1/8" BSP / 3/8" UNF MALE/MALE)
13	TD 689		2	(3/8" THIN)
14	TD 701	21-1-3	2	(-3BSP 90°)
15	TD 290		2	(-3 AEROQUIP)
16	TD 701	21-1-3	2	(-3BSP 90° AEROQUIP)
17	732-06-18	4-8-7	2	(1/8" BSP / 3/8" UNF MALE/MALE)
18			2	(3/8" THICK)
19	TD 107	7-2-1	1	
20	TD 107	7-2-1	1	
21			4	
22	TD 242		4	(7/16"UNF x 1 1/4"CH)
23	TD 325		4	(7/16" T&C)
24	753-06-02	4-24-9	4	
REAR BRAKES				
25			1	
26			3	
27	TD 284	7-1-8	1	(0.75" SIZE)
28	752-26-04	4-24-3	1	
29	TD 222		2	(5/16"UNF x 2 1/2"CH)
30	TD 323	20-1-7	4	(5/16" T&C)

ISSUE	SIGNATURE	DATE
1	JPHolroyd	18-4-75

SECTION L6

Item	Ref. No.	Matrix	No. Off	Detail
<u>REAR BRAKES CONT'd</u>				
31	BRAKE MASTER CYLINDER NYLOC NUT	TD 379	13-3-2	2 (5/16"UNF FULL)
32	BRAKE BUNDY PIPE (80"LENGTH)	TD 695	7-3-4	1 (3/16"OD)
33	" BULKHEAD ADAPTOR	752-26-02	4-16-13	1
34	" " " LOCKNUT			1
35	" " " STAR WASHER			1
36	" " " UNION	TD 701	21-1-3	1 (-3BSP 90° AEROQUIP)
37	HOSE - BULKHEAD ADAPTOR TO RH CALIPER (LENGTH)	TD 290	21-2-7	1 (-3 AEROQUIP)
38	BRAKE CALIPER INLET UNION	TD 701	21-1-3	1 (-3BSP 90° AEROQUIP)
39	" " " ADAPTOR	732-06-18	4-8-7	1 (1/8"BSP/3/8"UNF)
40	" " " " COPPER WASHER			1
41	BRAKE BANJO	TD 691	7-3-5	1 (2 WAY 90°)
42	" " BOLT	TD 690	7-3-8	1
43	" " COPPER WASHER			2
44	BRAKE LIGHT SWITCH			1
45	BRAKE CALIPER RH	TD 110	7-2-5	1
46	" " DISC PAD			2
47	" " MOUNTING BOLT			2
48	" " " WASHER			2
49	" " " BLOCK RH	721-10-02	5-1-15	1
50	" " " " BOLT			2
51	" " OUTLET ADAPTOR	732-06-18	4-8-7	1 (1/8"BSP/3/8"UNF MALE/MALE)
52	" " " " COPPER WASHER	TD 689		1 (3/8" THIN)
53	BRAKE CALIPER OUTLET UNION	TD 701	21-1-3	1 (-3BSP 90° AEROQUIP)
54	HOSE - RH CALIPER TO LH CALIPER ("LENGTH)	TD 290	21-2-7	1 (-3 AEROQUIP)
55	BRAKE CALIPER INLET UNION	TD 701	21-1-3	1 (-3BSP 90° AEROQUIP)
56	BRAKE CALIPER INLET ADAPTOR	732-06-18	4-8-7	1 (1/8"BSP/3/8"UNF MALE/MALE)
57	" " " " COPPER WASHER			1 (3/8" THIN)

SECTION L6

ISSUE	SIGNATURE	DATE
1	JR Holroyd	18-4-75

Item	Ref.No.	Matrix	No. Off	Detail
58	Td 110	7-2-5	1	
59			2	
60			2	
61			2	
62	721-10-01	5-1-4	1	
63			2	
CLUTCH				
64			1	
65			3	
66	TD 284	7-1-8	1	(0.75" SIZE)
67	752-26-04	4-24-3	1	
68	TD 222		1	(5/16"UNF x 2 1/2" CH)
69	TD 323	20-1-7	4	(5/16" T&C)
70	TD 379	13-3-2	2	(5/16" UNF FULL)
71	TD 689		1	(3/8" THIN)
72	TD 687			
73	TD 693	7-3-2	1	(1/4" OD)
74	722-18-04	4-16-14	1	
75				
76				
77	TD 700	21-1-5	1	(-4 BSP 45°)
78	TD 291	21-2-8	1	(-4 AEROQUIP)
79	TD 702	21-1-6	1	(-4 BSP 90° AEROQUIP)
80	722-18-08	4-8-8	1	(1/2" BSP / 3/8" UNF MALE/MALE)
81	TD 689		1	(3/8" THIN)

ISSUE	SIGNATURE	DATE
1	JRHolroyd	18-4-75

SECTION A6

Item	Ref. No.	Matrix	No. Off	Detail
MONOCOQUE ASSEMBLY	75S-01-02		1	
COMPRISES:				
1 MONOCOQUE			1	
2 SEAT TANK COVER PLATE			2	
3 " " " " DZUS			8	
4 " " " " DZUS WIRE			8	
5 REAR DIAPHRAGM LH	75S-01-35	3-13-3	1	
6 " " RH	75S-01-34	3-13-4	1	
7 " " BOLT	TD 529	12-2-14	38	(2BA x 1/2" BH)
8 " " NYLOC NUT	TD 410		38	(2BA FULL)
9 " " BOLT	TD 537		12	(2BA x 3/8"CH)
10 " " WAHSER	TD 365		50	(2BA T & C)
11 RACK MOUNTING BLOCK	712-04-06	4-2-13	2	
12 " " " BOLT	TD 226	12-4-14	4	(5/16"UNFx4"CH)
13 " " " WASHER	TD 323		8	(5/16" T & C)
14 " " " NYLOC NUT	TD 372		4	(5/16" UNF HALF)
15 5KG FIRE EXTINGUISHER MTG BRACKET	752-01-89		1	
16 LIFE SUPPORT/FIRE EXT. MTG "	753-01-13	3-1-11	1	
17 GEARSHIFT SHROUD	75S-11-03	3-1-13	1	
18 " " BOLT			4	
19 FOOT PLATE			1	
20 HEEL REST			1	
21 SEAT			1	
22 " BRACKET			1	
23 " BELT	TD 19	8-6-2	1	(ADJUSTABLE TYPE)
24 " " PLATE - FLAT	722-01-74	2-1-1	2	
25 " " PLATE - JOGGLED	722-01-75	2-1-2	2	
26 " " " BOLT			8	
27 " " " NUT			8	
28 WIRING LOOM TUBE COVER			1	
29 " " " " BOLT	TD 535		18	(2BA x 3/8"BH)
30 SWITCH PANEL COVER			1	
31 " " " BOLT	TD 535		7	(2BA x 3/8"BH)
32 ROLLOVER BAR	74S-01-07	3-2-2	1	
33 " " BOLT	TD 237	12-5-10	2	(3/8"UNF x 3"CH)
34 " " NYLOC NUT	TD 380		2	(3/8"UNF FULL)
35 " " HEADREST			1	

ISSUE	SIGNATURE	DATE
1	JR Holroyd	18-4-75
2	Schultz	9 SEP 75

SECTION A6

Item	Ref. No.	Matrix	No. Off	Detail
37			8	
38			4	
39	74S-01-09	3-2-3	1	
40	74S-01-10	3-2-4	1	
41			2	
42			2	
43			2	
44	73S-01-84	4-9-8	2	
45	TD 891		4	($\frac{1}{4}$ " UNF x $\frac{3}{4}$ " COUNTERSUNK SOCKET HEAD)
46	742-04-02	8-1-3	1	
47	712-04-07	4-2-4	1	
48	TD 7	8-1-4	3	
49			1	
50	75S-04-01	3-6-11	1	(31" LENGTH)
51	732-04-02	4-2-1	2	
52	TD 220	12-4-7	1	(5/16" UNF x 2" CH)
53	TD 323		1	(5/16" T & C)
54	TD 379		1	(5/16" UNF FULL)
55	TD 9	8-1-2	1	
56			1	
57			1	
58		8-4-4	1	
59		8-3-12	1	
GEARCHANGE MECHANISM				
COMPRISES:				
60	732-11-10	4-5-1	1	
61	712-11-10	4-5-2	1	
62	TD 203		1	($\frac{1}{4}$ " UNF x 1" CH)
63	TD 378		1	($\frac{1}{4}$ " UNF FULL)
64	752-11-04	4-24-12	1	
65			1	
66			1	
67	742-11-01	4-5-4	1	
68		8-6-10	1	
69			1	

ISSUE	SIGNATURE	DATE
1	JRHolroyd	18-4-75

SECTION A6

Item	Ref. No.	Matrix	No. Off	Detail
FIRE EXTINGUISHER SYSTEM				
COMPRISES:				
70			1	
71			1	(RED AND WHITE)
72			1	($\frac{1}{4}$ " UNF x 1" CH)
73			1	
74			1	
75			1	
76			2	(2BA x $\frac{1}{2}$ " CH)
77			2	(2BA SQ. SECTION)
78			1	($\frac{1}{8}$ " x 2")
79				
TO MASTER SWITCH				
80			1	
81			1	
82			1	
83			1	
84			1	
85			1	
86			1	
TO 2.5 KG FIRE EXTINGUISHER BOTTLE				
87			1	
88			1	
89			1	
90			1	
91			1	
92			1	
93			1	
94			1	
95			1	(2.5 KG SIZE)
96			2	(2.5 KG SIZE)
97			1	
98			1	
99			1	
100			1	

SECTION A6

ISSUE	SIGNATURE	DATE
1	JRHewryd	18-4-75

Item	Ref. No.	Matrix	No. Off	Detail
TO LIFE-SUPPORT BOTTLE				
101			1	
102			1	
103			1	
104			1	
105			1	
106			1	
107			1	
108			1	
109			2	
110			1	
TO 5 KG FIRE EXTINGUISHER BOTTLE				
111			1	
112			1	
113			1	
114			1	
115			1	
116			1	
117			1	
118			1	
119			1	(5 KG SIZE)
120			2	(5 KG SIZE)
121			1	
122			1	
123			1	
124			1	
125			1	
126			6	
FIRE PULL HANDLE TO COCKPIT FIRE LEVER				
127			1	
128			1	
129			1	
130			1	
131			1	
132			1	
133			1	

ISSUE	SIGNATURE	DATE
1	JPHolwayd	18-4-75

SECTION A6

Item	Ref. No.	Matrix	No. Off	Detail
134 FERRULE			1	
135 OUTER CABLE			1	
136 FERRULE			1	
137 CABLE ADJUSTER AND LOCKNUT			1	
138 SOLDER-ON NIPPLE			1	
139 CLEVIS			1	
140 CLEVIS PIN			1	
141 " " SPLIT PIN			1	
COCKPIT FIRE LEVER ASSEMBLY	752-22-03		1	
COMPRISES:				
142 COCKPIT FIRE LEVER	752-22-04	3-6-15	1	
143 " " " BADGE	752-22-08	8-5-11	1	
144 " " " BOLT	TD 540	12-2-15	1	(2BA x $\frac{3}{4}$ "BH)
145 " " " SPRING WASHER	TD 367		1	(2BA SQ. SEC.)
146 " " " PLAIN WASHER	TD 365		1	(2BA T & C)
147 " " " LABEL			1	(RED AND WHITE)
MONOCOQUE GROMMETS				
148 REAR BULKHEAD FIRE EXTINGUISHER CABLE GROMMET			1	($\frac{1}{2}$ " O.D. $\frac{1}{4}$ " I.D.)
149 REAR BULKHEAD GROMMET			3	($1\frac{3}{4}$ " O.D. 1" I.D.)
150 " " "			5	($1\frac{1}{2}$ " O.D. $\frac{3}{4}$ " I.D.)
151 FLEXIGROMMET			1	(24" LENGTH)

(F14)

SECTION (F) ENGINE INSTALLATION KIT (NEWHART) 7552

ITEM	PART NO	NO. OFF PER ASSY.	PROD. RELEASE DATE		
<u>EXHAUST SYSTEM</u>		1			
COMPRISES PRIMARIES TAILPIPE		4 1			
LINK ANCHOR PLATE		1			
LINK ANCHOR PLATE SPACER		4			
LINK ANCHOR PLATE DOUBLE SHEAR BRACKET					
" " " " " "					
<u>STARTER ENGINE ASSEMBLY</u>	755-16-10	1			
COMPRISES					
STARTER MOTOR DRIVE COUPLING	755-16-06	2			
STARTER SPINDLE	755-16-05	1			
BEARING HOUSING	755-16-08	1			
SPINDLE END HOUSING	755-16-09	1			
BEARING HOUSING BUSH	TD	1			
SPINDLE END HOUSING BUSH	TD	1			
STARTER MOTOR (3M/100 TYPE)	TD 266	1	18 NOV 74 JRH	9.1.10	
STARTER MOTOR BENDIX	TD 267	1	18 NOV 74 JRH.	4.1.11.	
1/8" STEEL WASHER	TD	2			
COUPLING DOG (COSWORTH)	TD	1			
THRUST WASHER	TD	1			

SECTION C6

ISSUE	SIGNATURE	DATE
1	JRHolroyd	18-4-75

Item	Ref. No.	Matrix	No. Off	Detail
1 TOP RADIUS ARM	752-03-02	3-3-6	2	(22.50" LENGTH)
2 BOTTOM RADIUS ARM	752-03-03	3-3-7	2	(23.00" LENGTH)
3 RADIUS ARM FIXING BOLT	TD 231	12-5-4	8	($\frac{3}{8}$ "UNF x $1\frac{1}{2}$ "CH)
4 " " PLAIN WASHER	TD 324	20-1-8	8	($\frac{3}{8}$ "T & C)
5 " " NYLOC NUT	TD 373	13-3-9	8	($\frac{3}{8}$ "UNF HALF)
6 ** TOP CLEVIS	703-03-19	4-3-2	2	**
7 " " UPRIGHT WASHER	712-03-20	4-2-15	2	
8 " " PLAIN WASHER	TD 326	20-1-10	2	($\frac{1}{2}$ "T & C)
9 " " NYLOC NUT	TD 375	13-3-11	2	($\frac{1}{2}$ " UNF HALF)
10 ** BOTTOM CLEVIS	703-03-19	4-3-2	2	**
11 " " UPRIGHT WASHER	712-03-20	4-2-15	2	
12 " " PLAIN WASHER	TD 326	20-1-10	2	($\frac{1}{2}$ " T & C)
13 " " NYLOC NUT	TD 375	13-3-11	2($\frac{1}{2}$ "	UN F HALF)
14 TOP LINK	703-03-06	4-6-6	2	(4.5" LENGTH)
15 " " INNER ROSE JOINT LOCKNUT	TD 389	13-4-10	2	($\frac{1}{2}$ "UNF HALF)
16 " " OUTER ROSE JOINT LOCKNUT	TD 402	13-4-14	2	($\frac{1}{2}$ " UNF LH HALF)
17 BOTTOM LINK	73S-03-04	3-4-3	4	(9.5" LENGTH)
18 " " INNER L.A. PLATE WASHER	712-03-20	4-2-15	8	
19 " " OUTER UPRIGHT BOLT	TD 526	12-7-9	2	($\frac{1}{2}$ "UNF x $3\frac{1}{2}$ "CH)
20 " " " UPRIGHT WASHER	712-03-20	4-2-15	4	
21 " " " PLAIN WASHER	TD 326	20-1-10	2	($\frac{1}{2}$ " T & C)
22 " " " NYLOC NUT	TD 375	13-3-11	2	($\frac{1}{2}$ " UNF HALF)
23 " " INNER ROSE JOINT LOCKNUT	TD 402	13-4-14	4	($\frac{1}{2}$ " UNF LH HALF)
24 " " OUTER ROSE JOINT LOCKNUT	TD 389	13-4-10	4	($\frac{1}{2}$ "UNF HALF)
25 REAR DAMPER	TD 201	16-1-11	2	(1191B SP3 KONI)
26 " " INSERT	712-02-09	4-2-12	4	
27 " " TOP BOLT	TD 538	12-5-11	2	($\frac{3}{8}$ "UNF x $3\frac{1}{4}$ "CH)
28 " " TOP NYLOC NUT	TD 380	13-3-3	2	($\frac{3}{8}$ "UNF FULL)
29 " " BOTTOM BOLT	TD 526	12-7-9	2	($\frac{1}{2}$ "UNF x $3\frac{1}{2}$ "CH)
30 " " BOTTOM NYLOC NUT	TD 375	13-3-11	2	($\frac{1}{2}$ "UNF HALF)
31 " " BOTTOM WASHER	712-03-20	4-2-15	2	
32 REAR SPRING	TD 441	16-1-6	2	(8" x 550 lb)
33 TYRAP LARGE	TD 195	8-3-15	2	
34 REAR ANTI-ROLL BAR	732-05-04	2-1-9	1	(1" DIA x 16g)
35 RARB MOUNTING	732-05-05	4-2-2	4	(1" ID)
36 " " BOLT	TD 207	12-3-5	2	($\frac{1}{4}$ "UNF x 2" CH)

ISSUE	SIGNATURE	DATE
1	JL Helroyd	18-4-75

SECTION C6

Item	Ref. No.	Matrix	No. Off	Detail
37 RARB MOUNTING PLAIN WASHER	TD 322	20-1-6	2	($\frac{1}{4}$ " T & C)
38 " " NYLOC NUT	TD 378	13-3-1	2	($\frac{1}{4}$ "UNF FULL)
39 " " BOLT	TD 212	12-3-9	2	($\frac{1}{4}$ "UNF x $3\frac{1}{2}$ "CH)
40 " " PLAIN WASHER	TD 322	20-1-6	2	($\frac{1}{4}$ " T & C)
41 " " NYLOC NUT	TD 378	13-3-1	2	($\frac{1}{4}$ " UNF FULL)
42 RARB CLAMP	72X-05-19	1-2-9	2	(1" ID)
43 " " BOLT	TD 204	12-3-2	2	($\frac{1}{4}$ "UNFx $1\frac{1}{4}$ "CH)
44 " " NYLOC NUT	TD 378	13-3-1	2	($\frac{1}{4}$ " UNF FULL)
45 RARB LINK	732-05-02	1-2-12	2	($10\frac{7}{8}$ " LENGTH)
46 " " TOP BOLT	TD 216	12-4-3	2	($5/16$ "UNF x 1" ch)
47 " " TOP NYLOC NUT	TD 379	13-3-2	2	($5/16$ "UNF FULL)
48 " " BOTTOM BOLT	TD 519	12-4-2	2	($5/16$ "UNF x $3\frac{1}{4}$ "CH)
49 " " BOTTOM FORWARD WASHER	703-02-12	4-1-15	2	
50 " " BOTTOM REARWARD WASHER	722-05-12	4-1-14	2	
51 " " BOTTOM NYLOC NUT	TD 379	13-3-2	2	($5/16$ " UNF FULL)
52 " " ROSE JOINT LOCKNUT	TD 386	13-4-7	4	($5/16$ "UNF HALF)
53 REAR CROSSMEMBER PLATE (FOR USE WITH CAST RXM ONLY)	752-01-34	3-2-7	2	} FORD ENGINE ONLY
54 LH REAR CROSSMEMBER PLATE (FOR USE WITH CAST RXM ONLY)	752-01-46	3-2-8	1	
55 RH REAR CROSSMEMBER PLATE (FOR USE WITH CAST RXM ONLY)	752-01-51	3-2-9	1	
56 RARB MOUNT SPACER (FOR USE WITH CAST RXM ONLY)	752-01-26	4-11-6	2	
** TO BE SUPERSEDED BY: CLEVIS	75R-03-03	4-6-14		
WHEN 703-03-19 WASHER	712-03-20	4-2-15		
STOCKS EXHAUSTED.				

ISSUE	SIGNATURE	DATE
1	JRHolroyd	18-4-75

SECTION G7

Item	Ref. No.	Matrix	No. Off	Detail
GEARBOX ASSEMBLY				
COMPRISES:				
1	GEARBOX	TD 164	18-1-3	1 (HEWLAND FG400)
2	" OUTPUT FLANGE	TD 165	18-1-9	2
3	" " " CIRCLIP	TD 105	18-2-10	2
4	CLUTCH SLAVE CYLINDER			1
5	" " " BOLT			2
6	" " " WASHER			2
7	" PUSH ROD			1
8	" " " END CAP			1
9	" " " LOCKNUT			3
10	" " " SUPPORT BRACKET	752-16-06	3-2-13	1
11	" RELEASE BEARING	TD 26		1
12	GEARBOX END COVER	732-16-09	6-1-14	1
13	GEARBOX REAR CROSSMEMBER BOLT	TD 260	12-7-11	2 ($\frac{1}{2}$ " UNF x $4\frac{1}{2}$ " CH)
14	" " " WASHER	TD 326	20-1-10	2 ($\frac{1}{2}$ " T & C)
15	" " " NYLOC NUT	TD 382	13-3-5	2 ($\frac{1}{2}$ " UNF FULL)
16	GEARBOX ADAPTOR PLATE BOLT	TD 500	12-9-5	8 ($\frac{3}{8}$ " UNC x $1\frac{1}{2}$ " CH)
17	" " " SPRING WASHER	TD 336	20-1-13	8 ($\frac{3}{8}$ " SQ. SEC.)
18	" " " WASHER	TD 324	20-1-8	8 ($\frac{3}{8}$ " T & C)
DRIVESHAFT ASSEMBLY				
COMPRISES:				
19	REAR DISC	TD 116	7-1-5	1
20	" " BELL	731-10-01	4-21-11	1
21	" " " BOLT	TD 282	12-1-5	6 ($\frac{1}{4}$ " UNF x $\frac{3}{4}$ " LONG SHANK CH)
22	" " " WASHER	TD 322	20-1-6	12 ($\frac{1}{4}$ " T & C)
23	" " " K NUT	TD 404	13-2-3	6 ($\frac{1}{4}$ " UNF)
24	PLUNGE JOINT HOUSING	TD 185	14-1-14	1 (107 V JOINT)
25	" " " BOLT	741-10-01	12-1-4	6
26	" " " K NUT	TD 406	13-2-1	6 ($\frac{3}{8}$ " UNF)
27	" " " CAGE	TD 188	14-1-12	1 (107 V JOINT)
28	" " " BALL	TD 187	14-1-13	6 (107 V JOINT)
29	" " " INNER TRACK	TD 186	14-1-11	1 (107V JOINT)
30	" " " GAITER	TD 178	14-1-10	1
31	" " " RETAINER	TD 189	14-1-15	1
32	" " " TYRAP	TD 195	8-3-15	1 (LARGE SIZE)
	" " " CIRCLIP	TD 180	8-1-8	1

ISSUE	SIGNATURE	DATE
1	JR Helweg	18-4-75

SECTION G7

Item	Ref. No.	Matrix	No. Off	Detail
34 DRIVESHAFT	73S-10-07	4-3-8	1	
35 DRIVESHAFT OUTER CIRCLIP	TD 180	8-1-8	1	
36 CONSTANT VELOCITY JOINT GAITER	TD 183	14-1-5	1	
37 " " " " TYRAP	TD 195	8-3-15	1	(LARGE SIZE)
38 " " " BELL			1	* (100AC JOINT)
39 " " " CAGE	TD 182	14-1-3	1	(100 AC JOINT)
40 " " " BALL	TD 181	14-1-2	6	(100 AC JOINT)
41 " " "INNER TRACK	711-10-10	14-1-4	1	(100 AC JOINT)
42 WHEEL RETAINING STUD	703-06-08	4-1-8	1	
43 " " NUT	TD 16	13-1-1	1	($\frac{3}{4}$ " UNF FULL)
44 FRONT GEAR ROD	75S-11-04	3-5-12	1	
45 " " " LOCKNUT			1	
46 " " " ROSEJOINT LOCKNUT			1	
47 " " " UJ BOLT			1	
48 " " " " NUT			1	
49 CENTRE GEAR ROD	75S-11-05	3-5-13	1	
50 REAR GEAR ROD	732-11-11	3-5-14	1	
51 " " " ROSEJOINT LOCKNUT			1	
52 " " " FRONT UJ BOLT			1	
53 " " " " " NUT			1	
54 " " " REAR UJ BOLT			1	
55 " " " " " NUT			1	

* ALTERNATIVE SPEC. IS C.V. JOINT BELL 742-10-03

ISSUE	SIGNATURE	DATE
1	J.R. Holroyd	18-4-75.

SECTION N6

Item	Ref. No.	Matrix	No. Off	Detail
1 NOSE		11-2-1	1	
2 NOSE FRAME	75S-01-41	2-5-3	1	
3 " " BOLT	TD 205	12-3-3	4	($\frac{1}{2}$ " UNF x $1\frac{1}{2}$ " CH)
4 " " NYLOC NUT	TD 371	13-3-7	4	($\frac{1}{2}$ " UNF HALF)
5 " " CLEVIS	741-01-23	A4-6-7	4	
6 " " " BOLT	TD 202	12-3-12	4	($\frac{1}{2}$ " UNF x $\frac{3}{4}$ " CH)
7 " " " WASHER	TD 322	20-1-6	4	($\frac{1}{2}$ " T&C)
8 " " " NUT	TD 385	13-4-6	4	($\frac{1}{2}$ " UNF HALF)
9 " PIP PIN	TD 79	8-1.14	2	($\frac{1}{2}$ " DIA x $\frac{1}{2}$ " LONG)
10 " " " HOUSING	741-01-56	2-2-5	2	
11 CENTRE PONTOON LH		11-2-2	1	
12 " " RH		11-2-3	1	
13 " " FIXING BOLT			8	
14 " " " WASHER			8	
15 DOOR LH		11-2-4	1	
16 " RH		11-2-5	1	
17 DOOR CATCH ASSEMBLY			2	
Comprises:-				
18 DOOR CATCH BODY	TD	23-2-7	1	
19 " " SPRING CLIP	TD	23-2-8	1	
20 " " BOLT	TD 531		1	($\frac{3}{16}$ " UNF x 1" HI)
21 " " BUTTON	75S-01-55	4-23-2	1	
22 " " SLIDER BAR	75S-01-59	3-14-14	1	
23 " " " " KNOB		4-23-3	1	
24 " " " " " BOLT	TD 202	12-3-12	1	($\frac{1}{2}$ " UNF x $\frac{3}{4}$ " CH)
25 " " " " " WASHER	TD 322	20-1-6	1	($\frac{1}{2}$ " T&C)
26 " " " " " NYLOC NUT	TD 378	13-3-1	1	($\frac{1}{2}$ " UNF FULL)
27 " " COVER LH (FIBREGLASS)		11-3-8	1	
28 " " " RH (")		11-3-9	1	
29 " " " SCREW	TD		3	
30 DOOR SUPPORT ROD	75S-01-56	3-14-15	2	
31 " " " PIVOT TUBE	75S-01-57	3-15-1	4	
32 " " " HOUSING LH		3-15-2	1	
33 " " " " RH		3-15-3	1	

ISSUE	SIGNATURE	DATE
1	JRHolwayd	18-4-75.

SHEET 2 OF 3

SECTION N6

Item	Ref. No.	Matrix	No. Off	Detail
34	TD	23-2-9	2	
35	75S-01-48	3-4-5	1	
36			2	
Comprises:-				
37	75S-12-28	4-23-4	1	
38	TD	23-2-10	1	
39	TD		1	(2BA x BH)
40	TD		2	(2BA T&C)
41		11-2-6	1	
42	75S-01-44	1-5-5	1	
43	75S-01-43	1-5-6	1	
44	TD		2	
45	TD		2	
46			1	
47	TD 79	8-1-14	2	(½" DIA x 1" LONG)
48	741-01-56	2-2-5	2	
49	TD 79	8-1-14	2	(½" DIA x 1" LONG)
50		11-2-7	1	
51	TD		1	
52	TD		1	
53	TD	23-2-11	1	
54	TD	23-2-12	1	
55	75S-12-19	3-6-13	1	
56	75S-12-27	3-6-10	1	
57	TD 529	12-2-14	8	(2BA x ½" BH)
58	TD		8	(2BA T&C)
59	TD 351		8	(2BA PLAIN)
60	75S-12-18	4-17-1	1	
61	75S-12-08	4-17-2	2	
62	75S-12-05	4-14-14	2	
63			2	
64	75S-12-10	4-14-11	2	
65	75S-12-12	4-14-12	2	
66	75S-12-17	4-23-5	2	

ISSUE	SIGNATURE	DATE
1	JPHolroyd	18-4-75.

SECTION N6

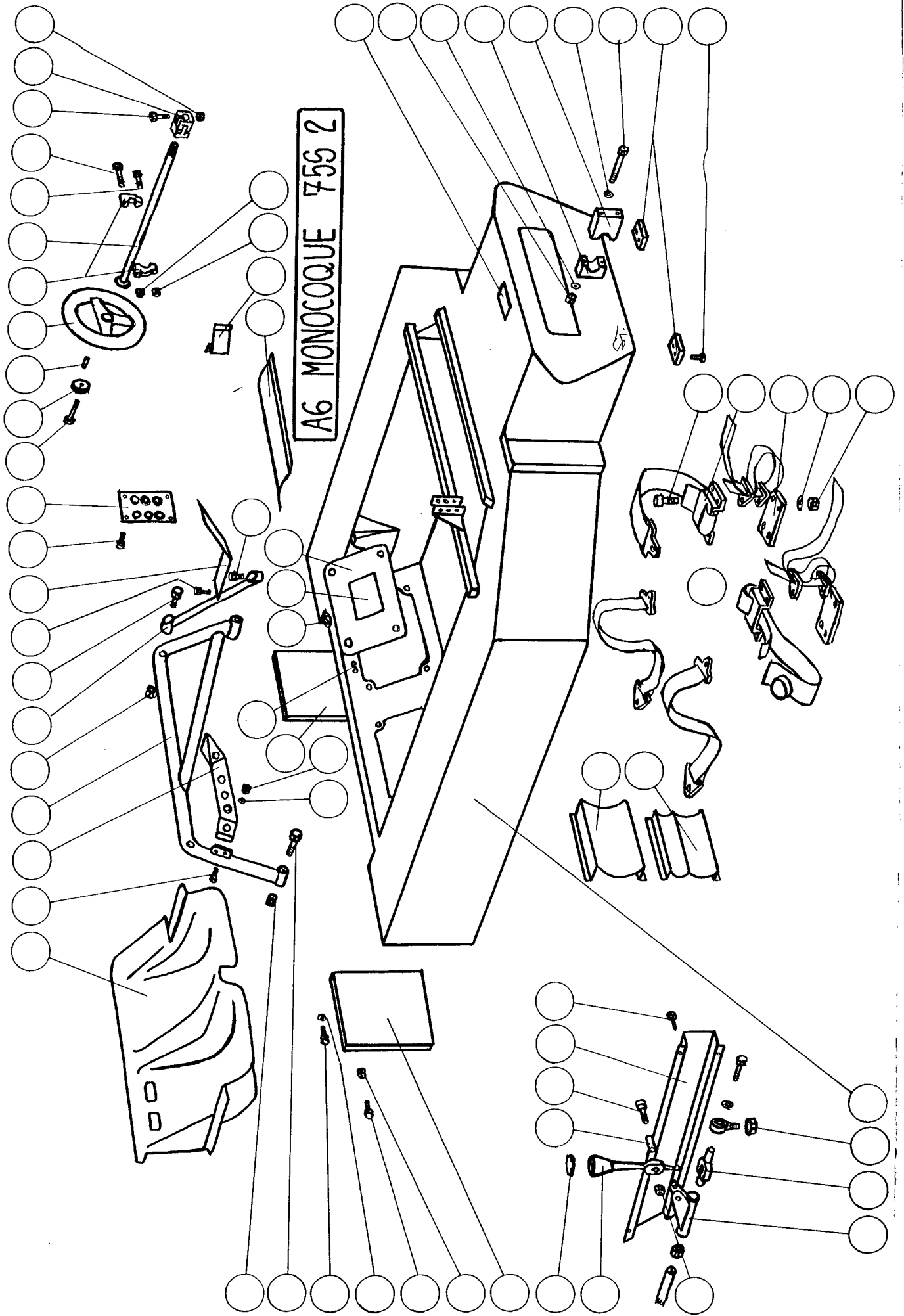
Item	Ref. No.	Matrix	No. Off	Detail
67 REAR WING PLATE WING ADJUSTMENT POST BUSH (OUTER)	75S-12-11	4-23-6	2	
68 REAR WING PLATE GEARBOX END COVER SPACER (LH)	755-12-07	4-23-7	1	(LONG, THICK)
69 REAR WING PLATE GEARBOX END COVER SPACER RH	75S-12-06	4-23-8	1	(SHORT; THIN)
70 REAR WING PLATE GEARBOX END COVER BUSH	75S-12-05	4-14-14	2	
71 WING ADJUSTMENT POST	75S-12-22	4-19-8	2	
72 " " " BOTTOM BOLT	TD 205	12-3-3	2	($\frac{1}{2}$ "UNF x $1\frac{1}{2}$ "CH)
73 " " " "				
NYLOC NUT	TD 371	13-3-7	2	($\frac{1}{2}$ "UNF HALF)
74 WING ADJUSTMENT PIN	75S-12-23	4-19-19	2	
75 " " " TOP BOLT	TD 202	12-3-12	2	($\frac{1}{2}$ " UNF x $\frac{3}{4}$ "CH)
76 " " " TOP NYLOC NUT	TD 378	13-3-1	2	($\frac{1}{2}$ "UNF FULL)
77 WING ADJUSTMENT PIN LOCK BOLT	TD 202	12-3-12	2	($\frac{1}{2}$ "UNF x $\frac{3}{4}$ "CH)
78 " " " NYLOC NUT	TD 378	13-3-1	2	($\frac{1}{2}$ "UNF FULL)
79 FRONT BRAKE DUCTS	75S-26-01		2	
Comprise:-				
80 DUCT LH	75S.26-03	3-15-4	1	
81 " RH	75S-26-04	3-15-5	1	
82 SCOOP	75S-26-05	3-15-6	2	
83 FUNNEL	75S-26-06	3-15-7	2	
84 TUBING (LENGTH)	TD			

85 OIL TANK COVER		11-5-7	1	
-------------------	--	--------	---	--

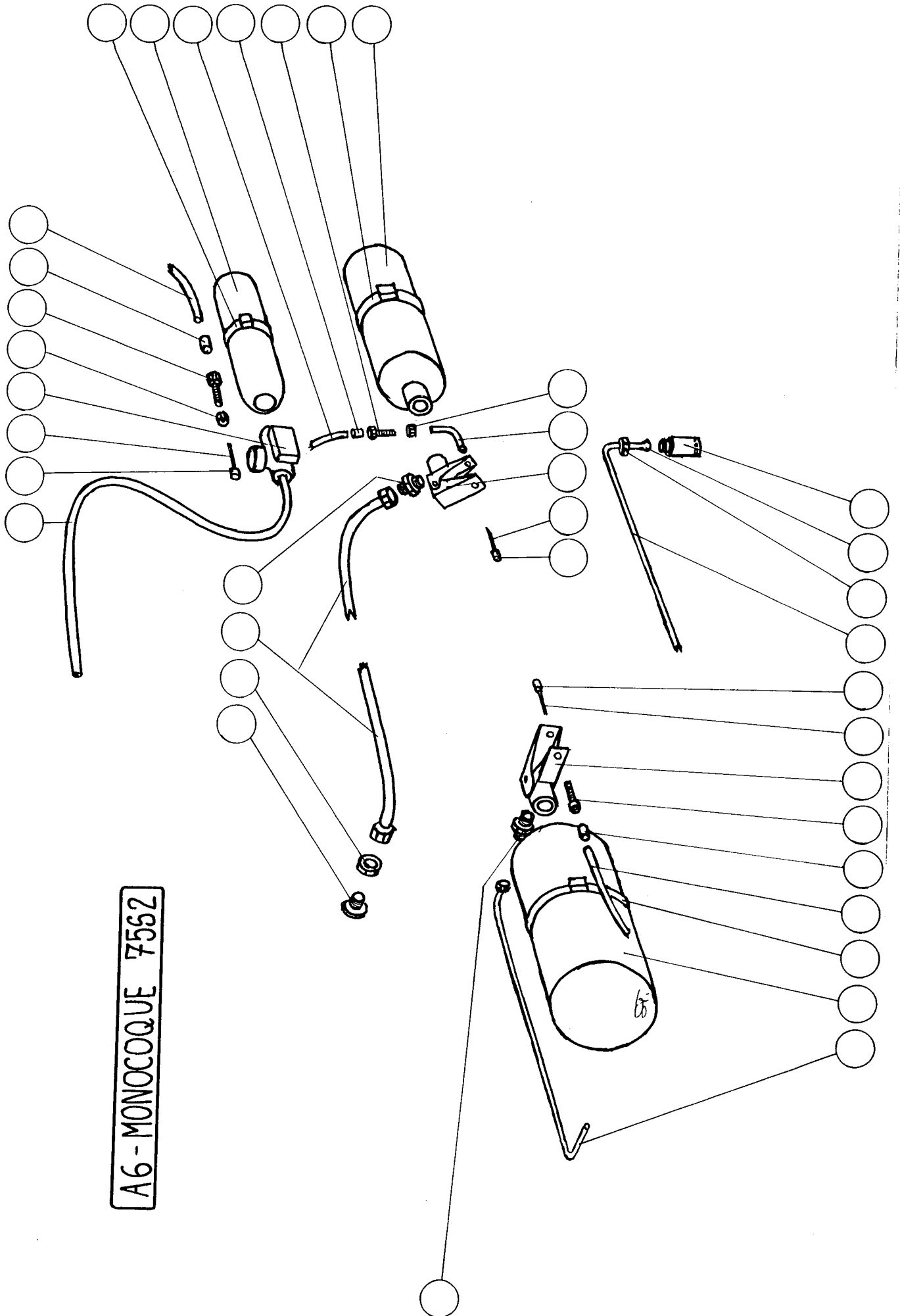
ISSUE	SIGNATURE	DATE
1	J. Helroyd	18-4-75

SECTION D6

Item	Ref. No.	Matrix	No. Off	Detail
FRONT UPRIGHT ASSEMBLY LH			1	
COMPRISES:				
1 TOP NYLOC NUT	TD 375	13-3-11	1	($\frac{1}{2}$ " UNF HALF)
2 TOP PLAIN WASHER	TD 326	20-1-10	1	($\frac{1}{2}$ " T&C)
3 TOP WASHER	752-02-07	4-17-3	1	
4 FRONT UPRIGHT WASHER	722-03-10	4-15-11	1	
5 " " " - LARGE	703-03-20	4-15-10	1	
6 TOP BOLT	TD 526	12-7-9	1	($\frac{1}{2}$ " UNF x $3\frac{1}{4}$ " CH)
7 FRONT UPRIGHT LH	743-06-01	6-1-1	1	
8 " " HELICOIL	TD 147	22-1-7	2	($\frac{7}{16}$ " UNF x $1\frac{1}{2}$ " D)
9 " " GRUB SCREW	TD 153	12-1-1	1	(2BA x $\frac{1}{2}$ ")
10 FRONT WHEEL STUD ASSEMBLY	753-06-01	3-8-8	1	
11 " " " SPIROL PIN	TD 154	8-1-7	2	($\frac{3}{32}$ " x $\frac{7}{8}$ ")
12 " " NUT	TD 16	13-1-1	1	($\frac{3}{8}$ " UNF FULL)
13 FRONT AXLE	711-06-03	4-1-4	1	
14 " " DRIVE PIN	711-07-04	4-1-9	3	
15 " BRAKE DISC	TD 116	7-1-5	1	
16 " " DISC BELL	732-06-17	4-6-5	1	
17 " " " " BOLT	TD 282	12-1-15	6	($\frac{1}{4}$ " UNF x $\frac{3}{4}$ " LONG SHANK CH)
18 " " " " WASHER	TD 322	20-1-6	12	($\frac{1}{4}$ " T&C)
19 " " " " K NUT	TD		6	($\frac{1}{4}$ " UNF)
20 " BEARING SPACER	711-06-07	4-1-5	1	
21 FRONT OUTER SPACER	711-07-05	4-1-13	1	
22 " WHEEL BEARING	TD1	8-1-5	2	
23 BOTTOM PIN	707-06-08	4-1-10	1	
24 FBWB OUTER JOINT INSERT	707-06-09	4-1-3	1	
25 " " " RETAINING WASHER	703-02-21	4-1-2	1	
26 BOTTOM NYLOC NUT	TD 375	13-3-11	1	($\frac{1}{2}$ " UNF HALF)
27 FRONT UPRIGHT ASSEMBLY RH			1	
COMPRISES AS ABOVE BUT				
28 FRONT UPRIGHT RH	743-06-02	6-1-2	1	
FRONT WHEEL ASSEMBLY			2	
COMPRISES:				
29 ROAD WHEEL - 10" CAST	703-09-03	19-1-2	1	
30 WHEEL WASHER	712-07-10	4-6-10	1	
31 WHEEL WASHER INSERT	712-07-11	4-6-11	1	

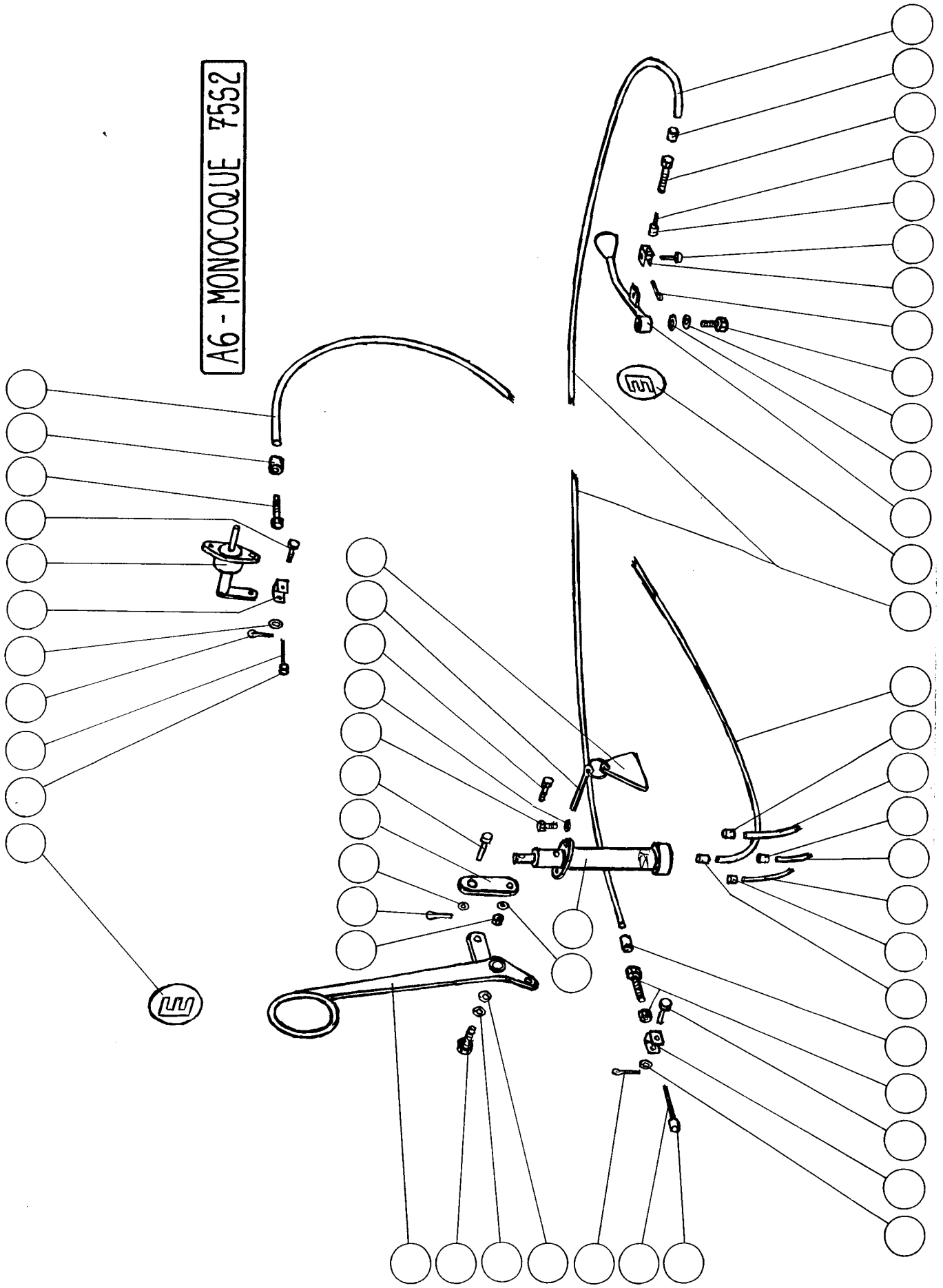


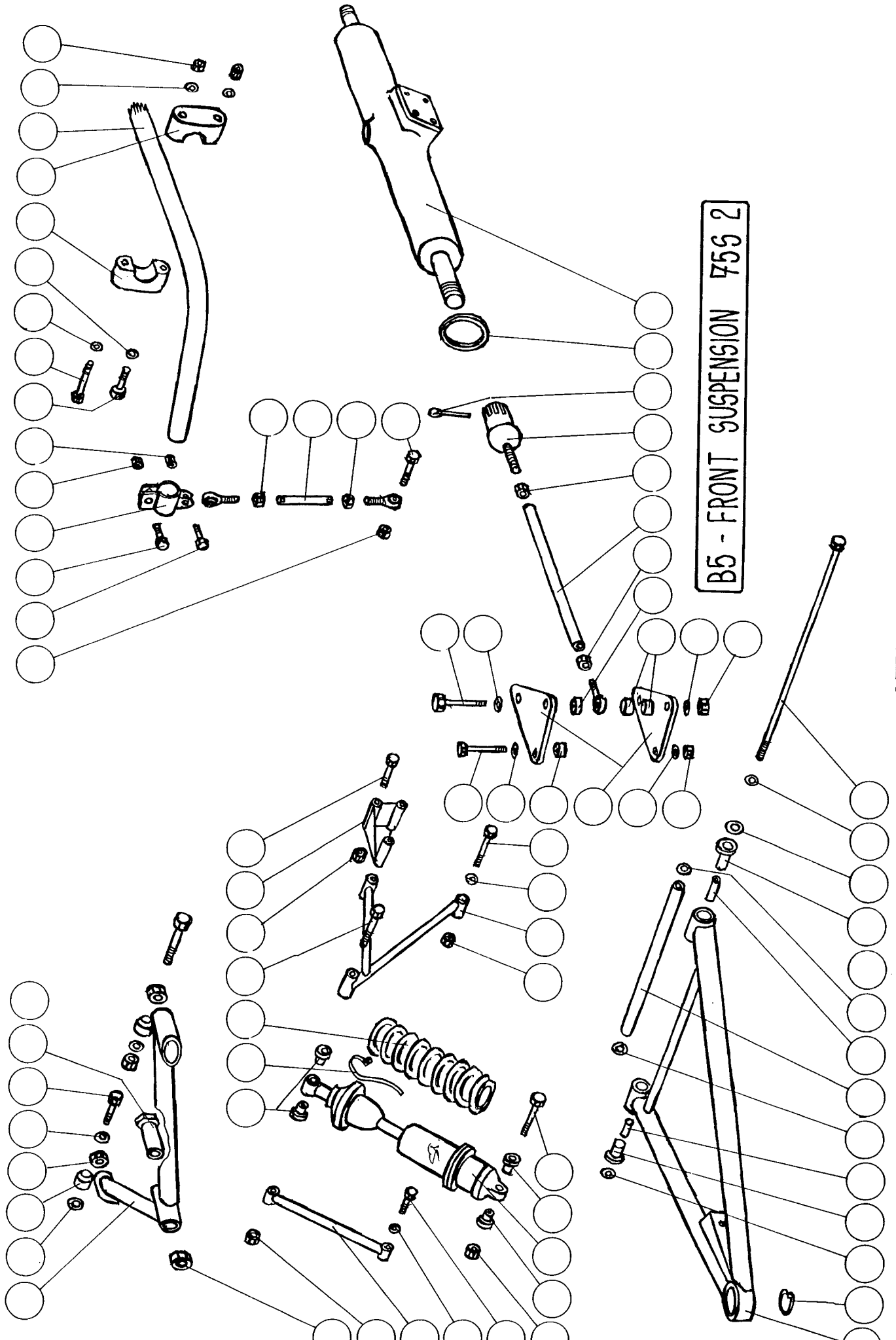
A6 MONOCOQUE 755 2



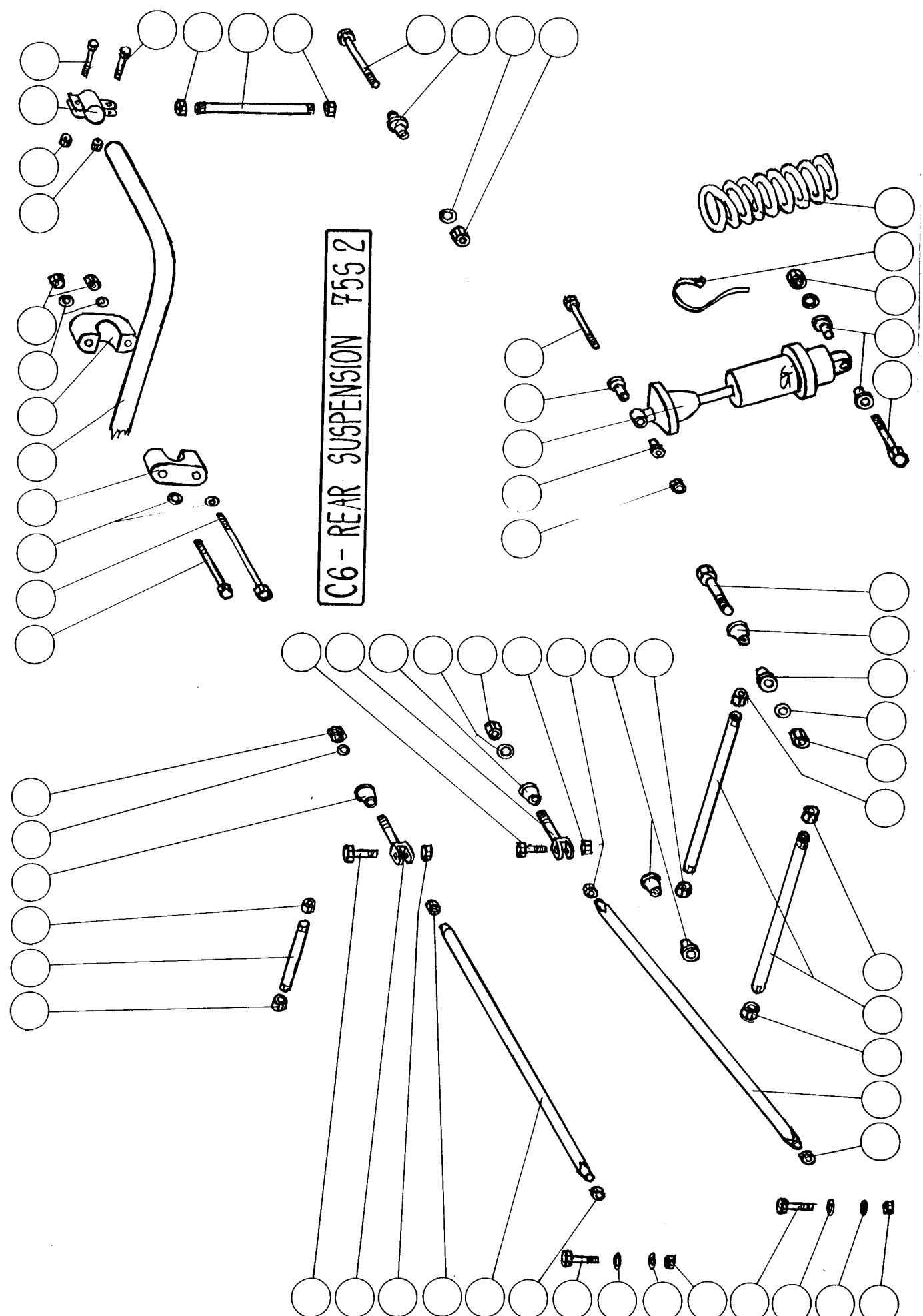
A6-MONOCOQUE 7552

A6 - MONOCOQUE 7552

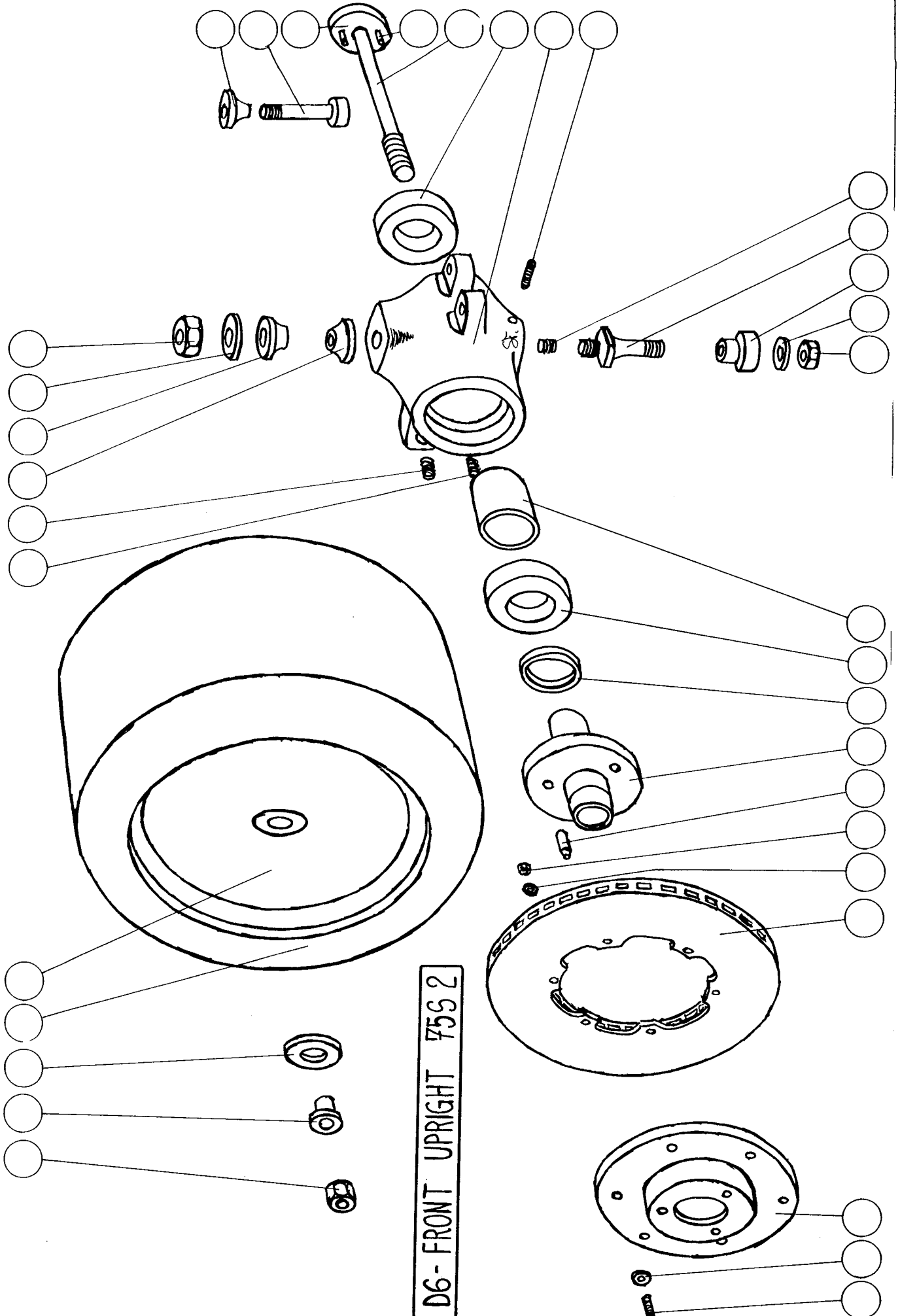




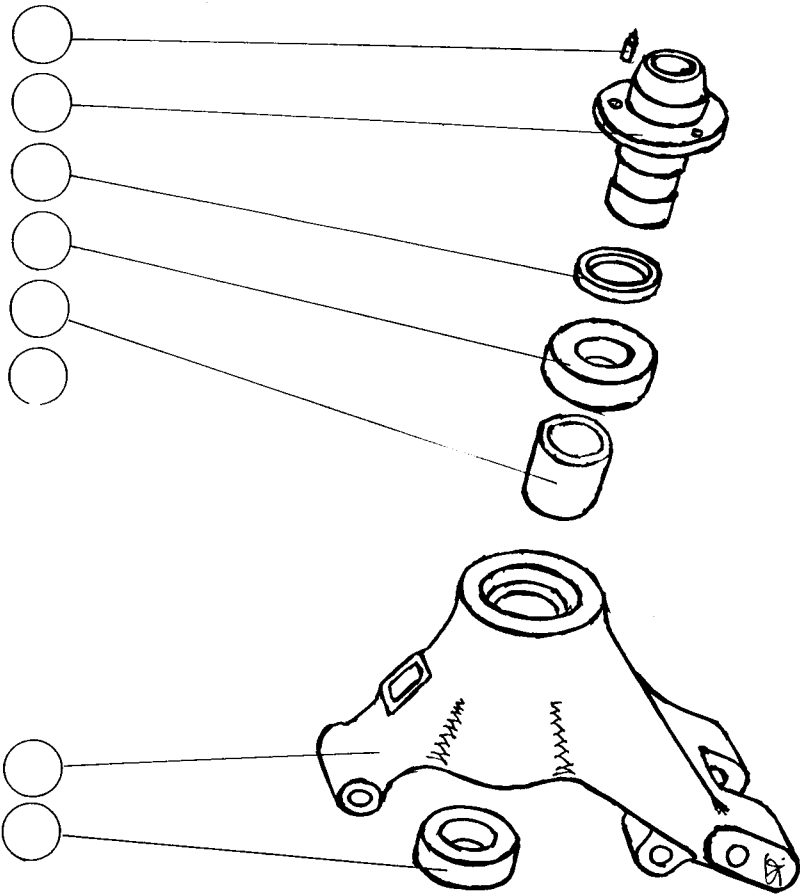
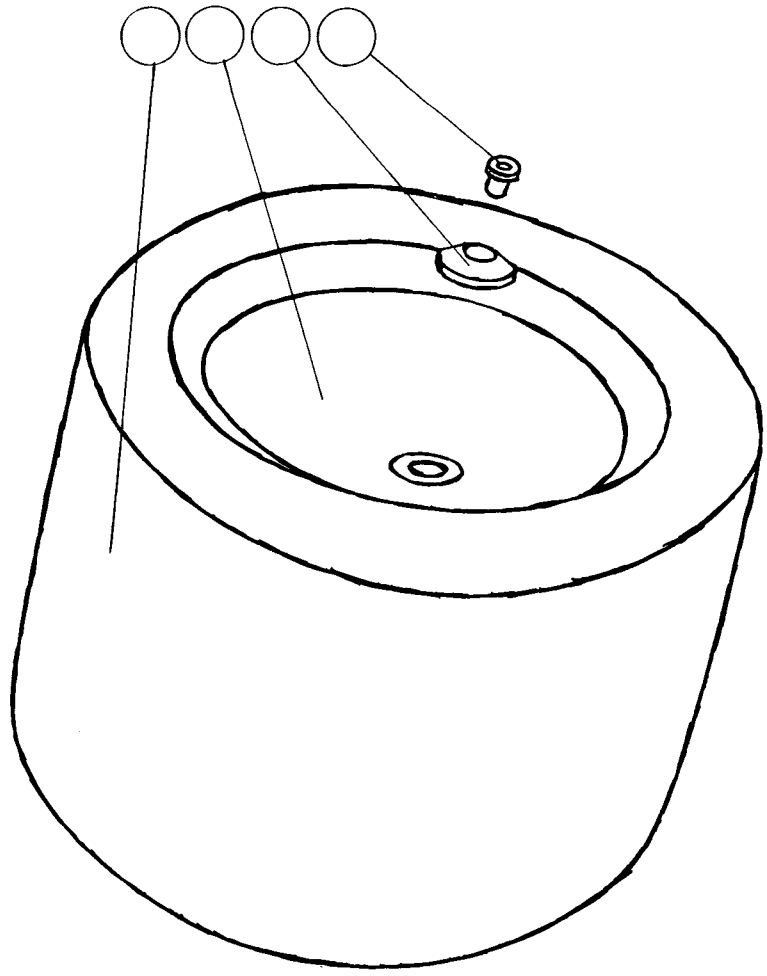
B5 - FRONT SUSPENSION 755 2



C6-REAR SUSPENSION 7552

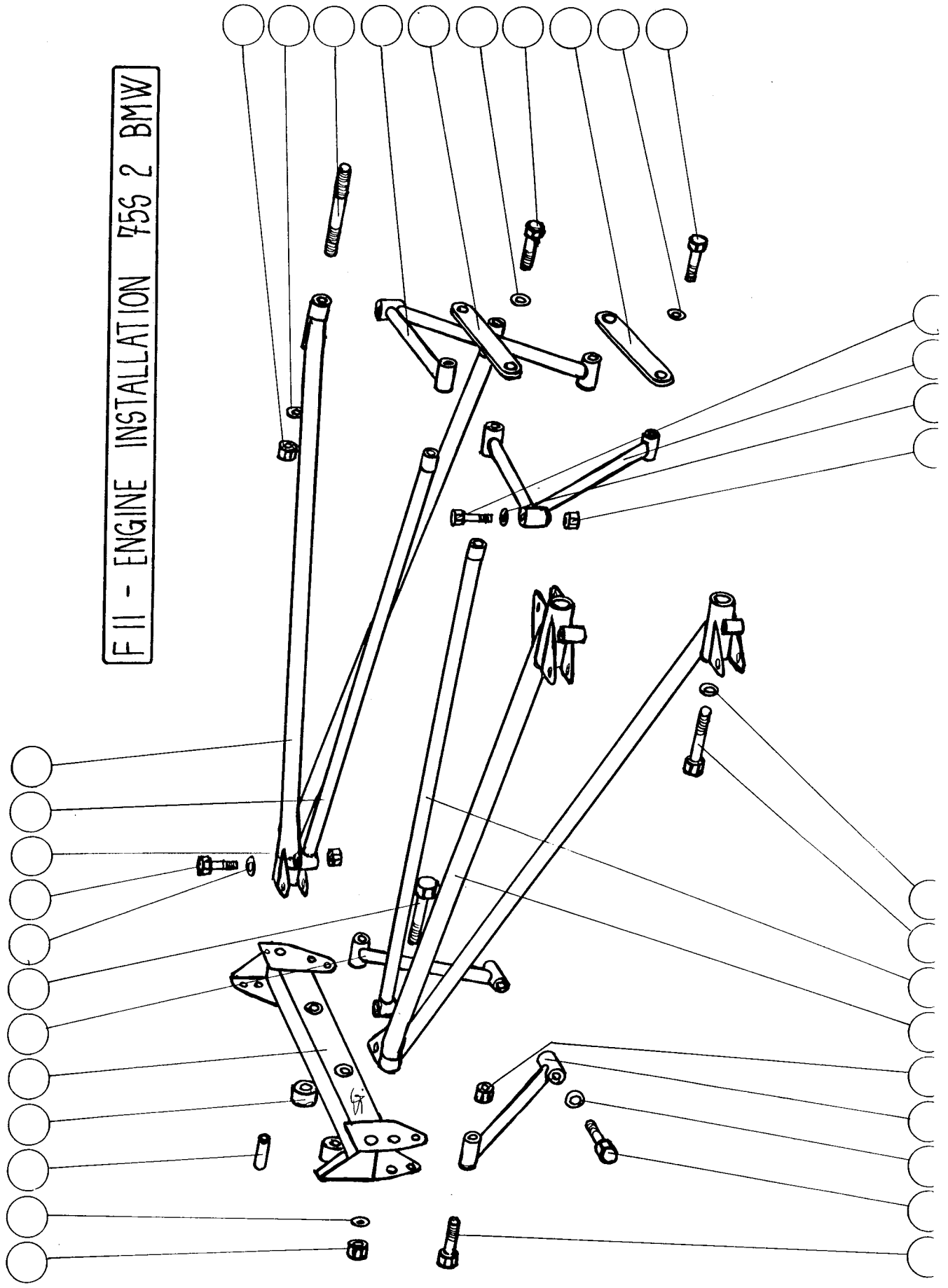


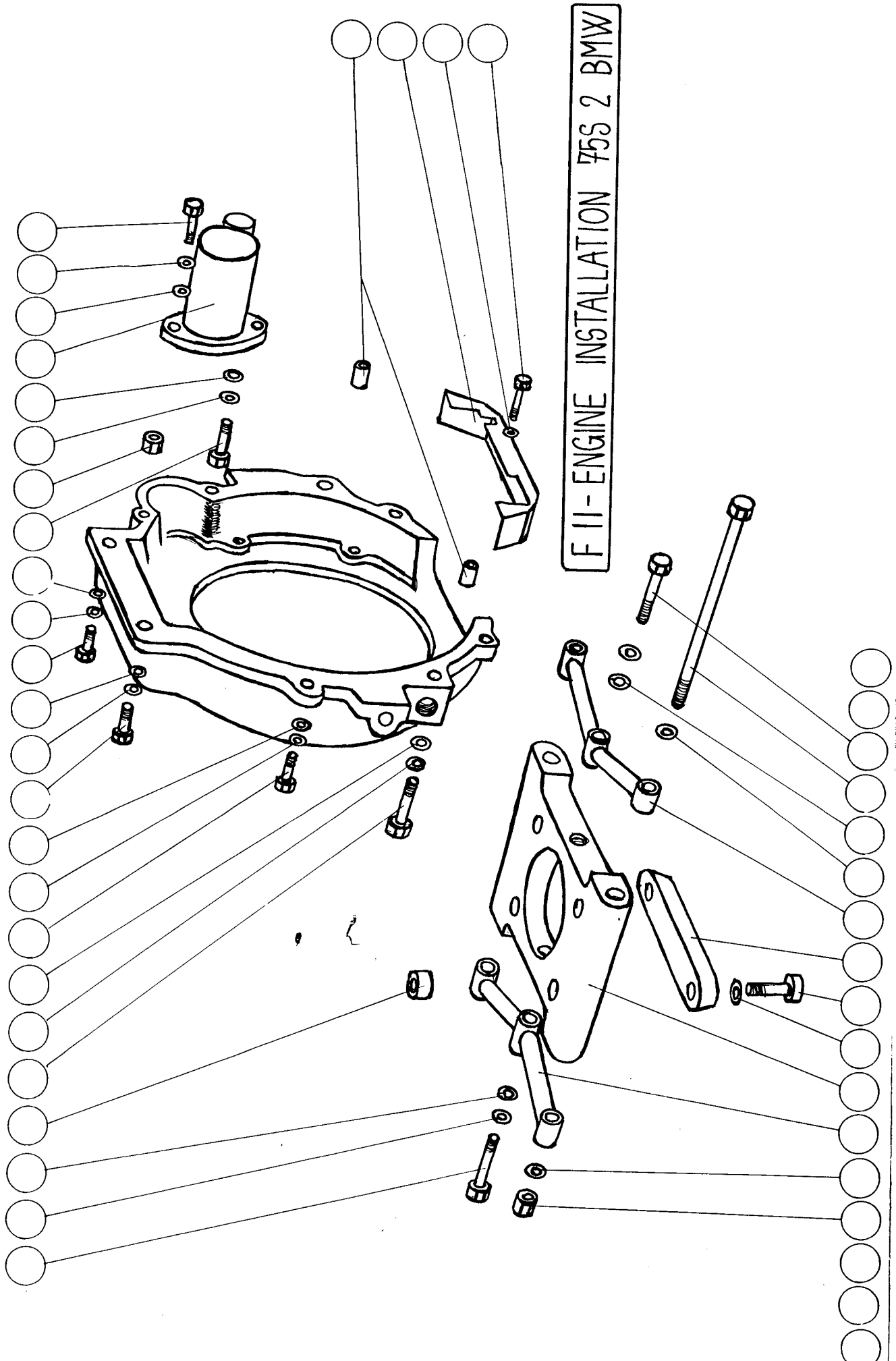
D6- FRONT UPRIGHT 75S 2



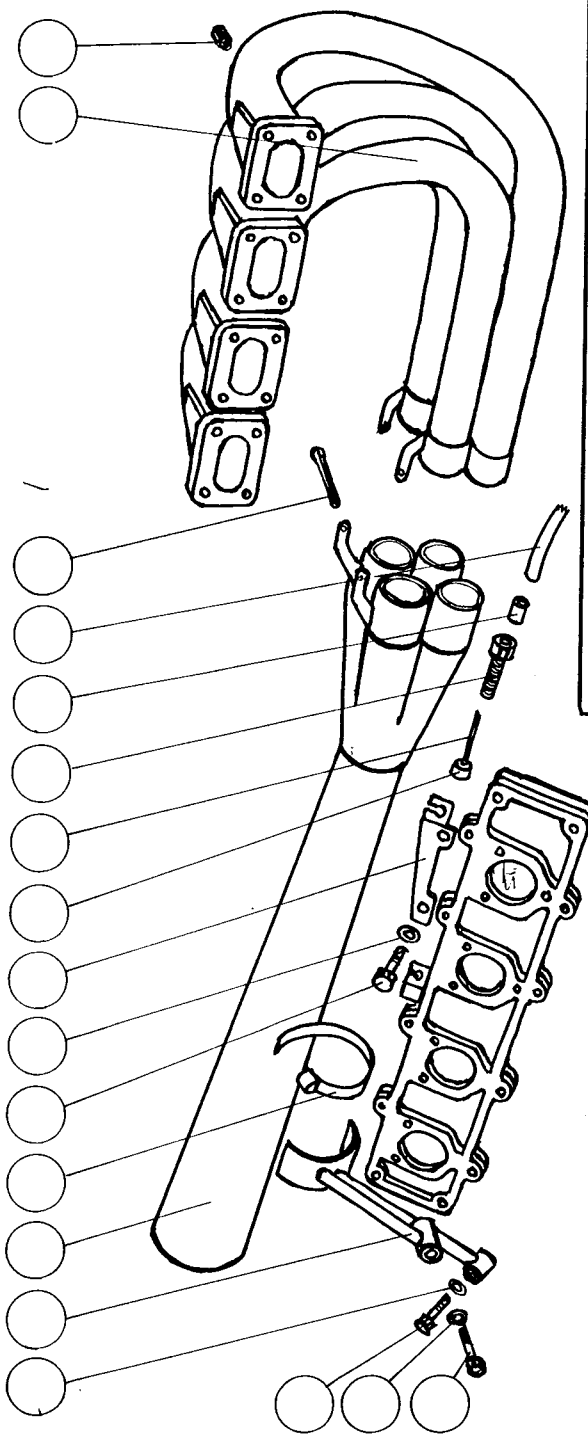
D6 - REAR UPRIGHT 755 2

F11 - ENGINE INSTALLATION 755 2 BMW

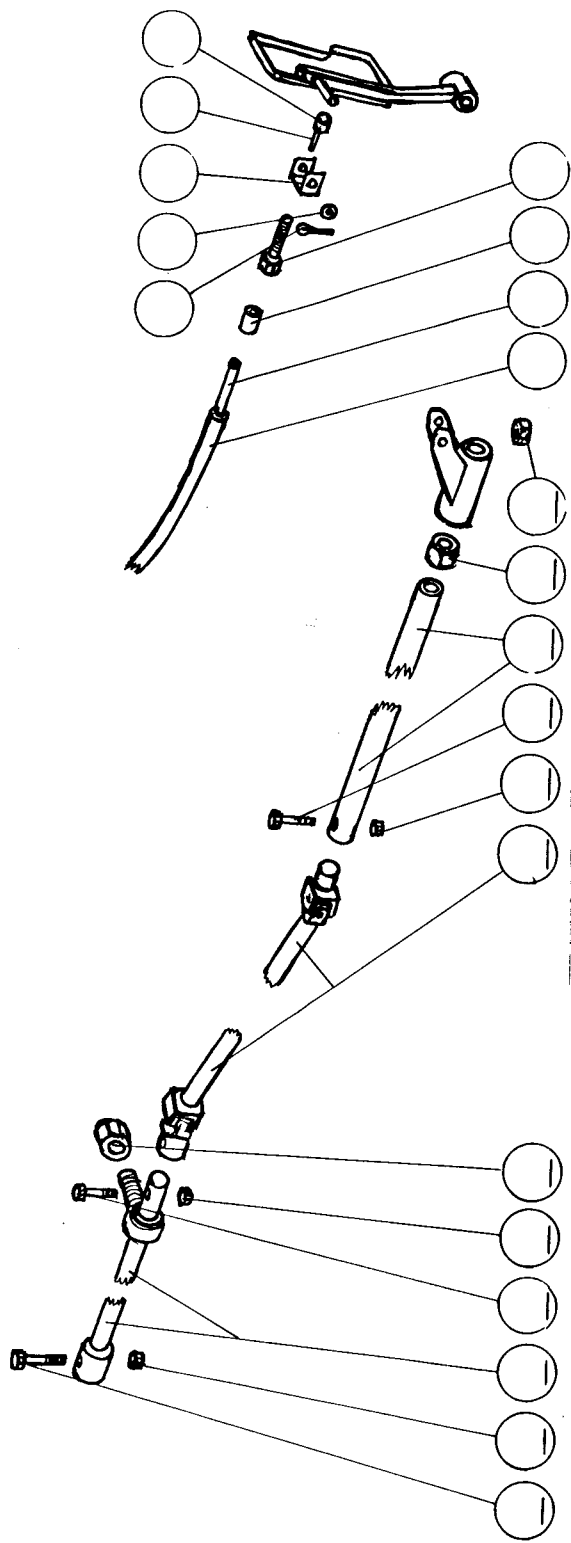




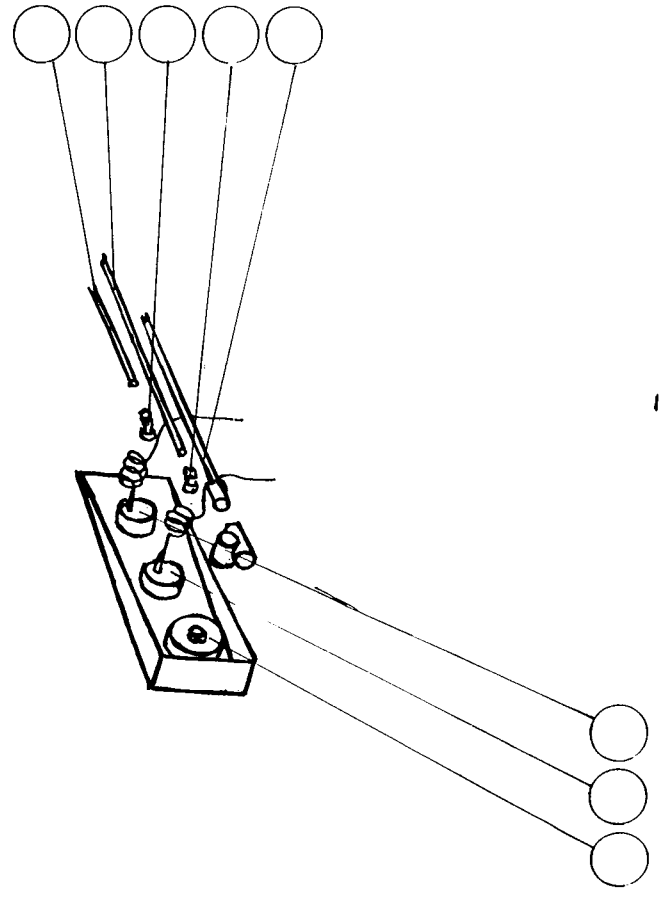
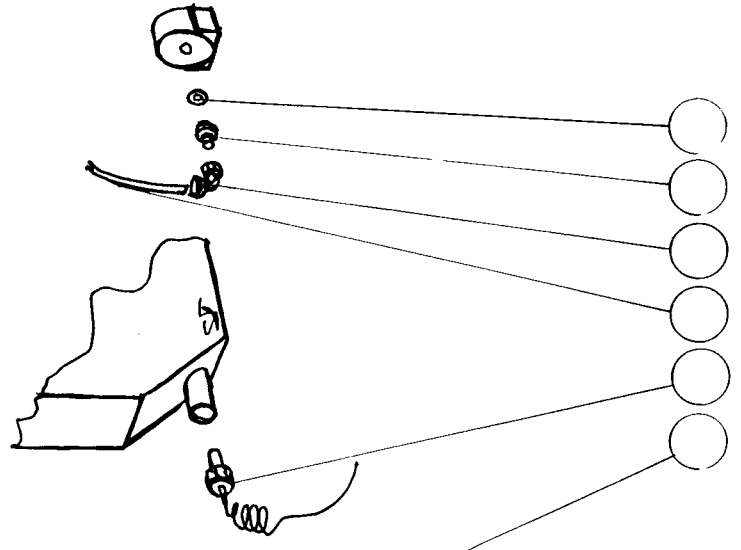
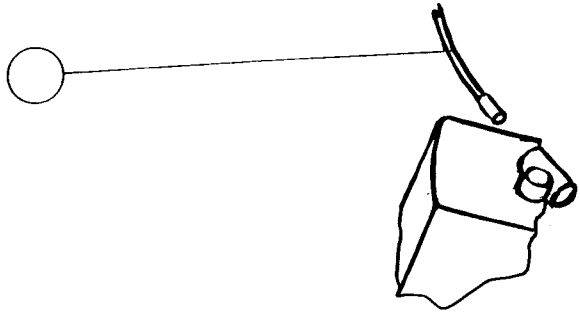
F11-ENGINE INSTALLATION 75S 2 BMW

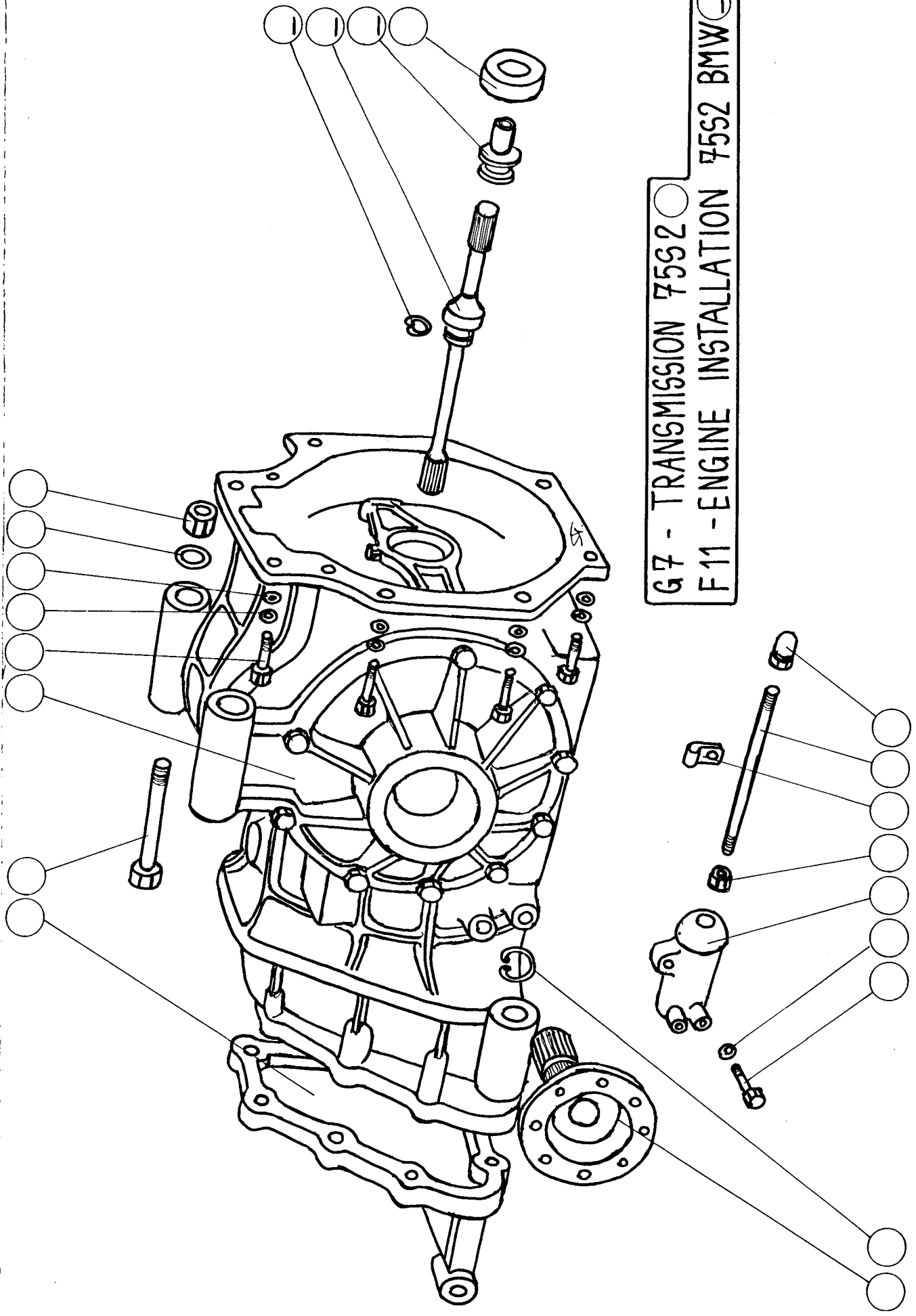


F 11-ENGINE INSTALLATION 7552 BMW ○
 G 7-TRANSMISSION 7552 ⊖

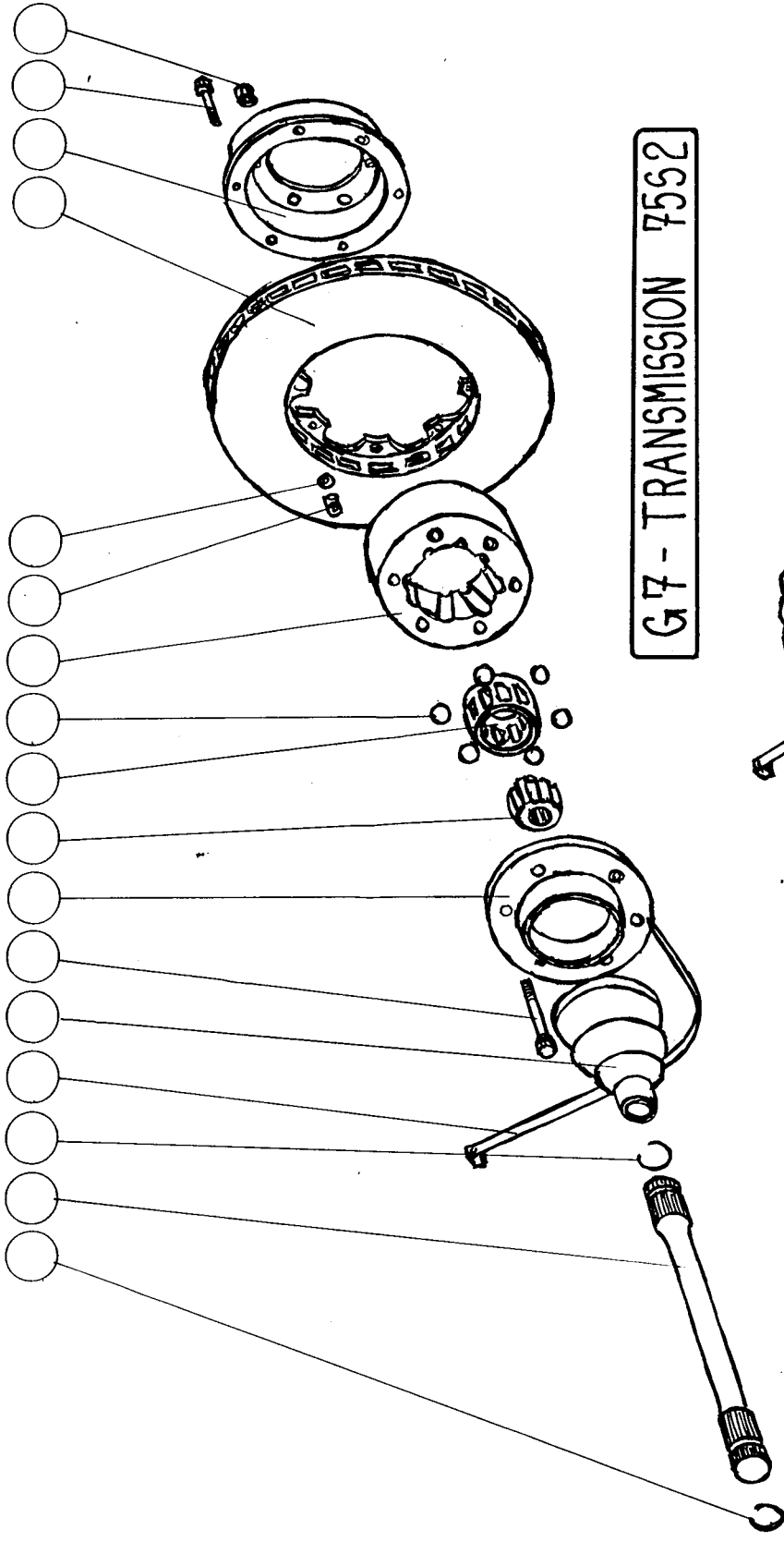


F11-ENGINE INSTALLATION 7562 BMW

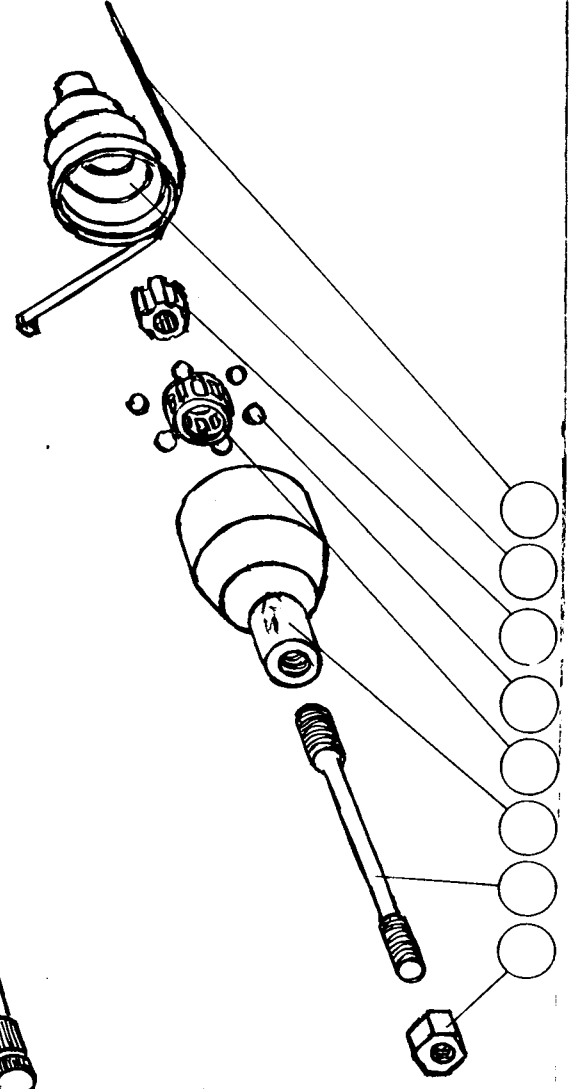


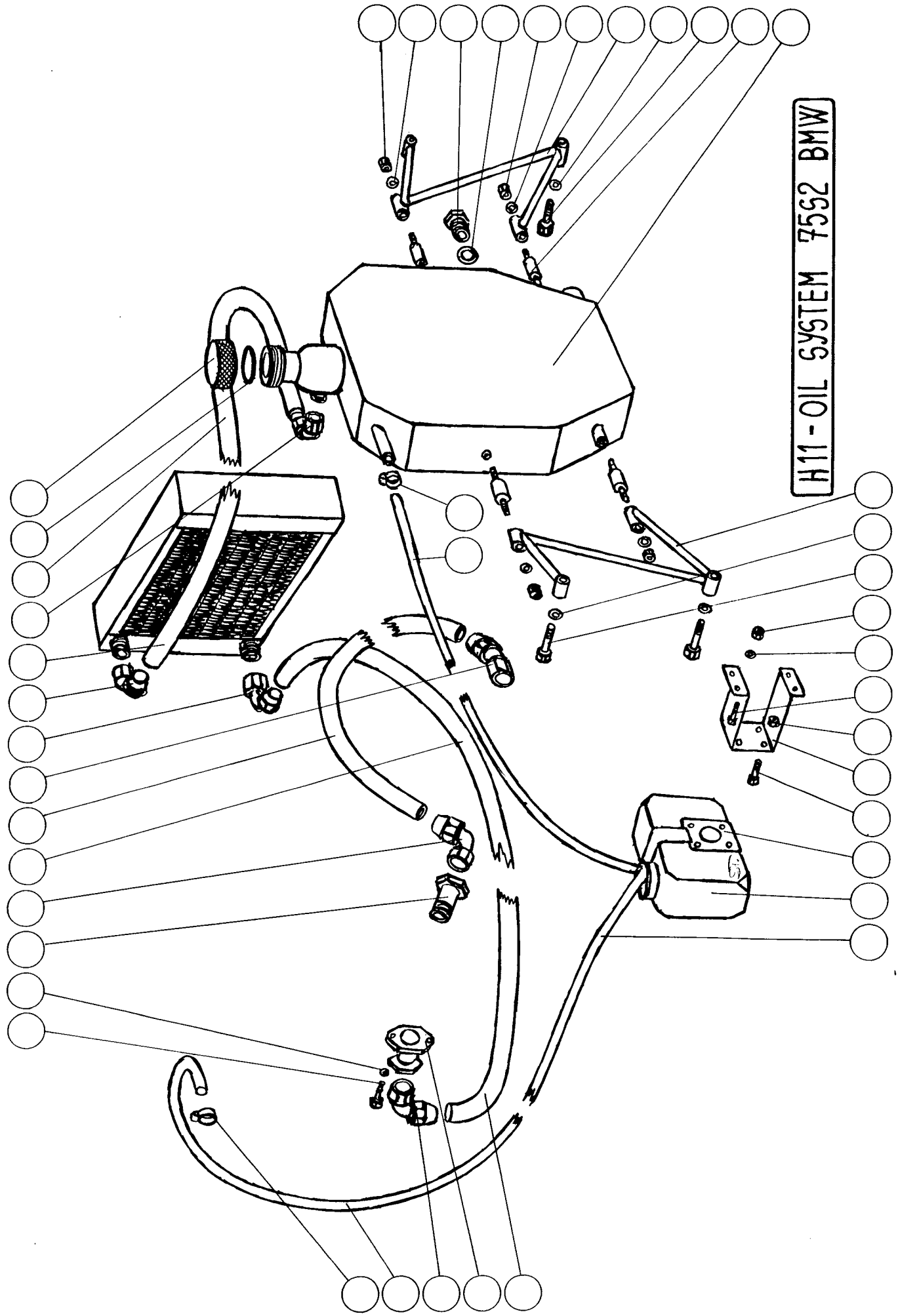


G7 - TRANSMISSION 7552 ○
 F11 - ENGINE INSTALLATION 7552 BMW ○

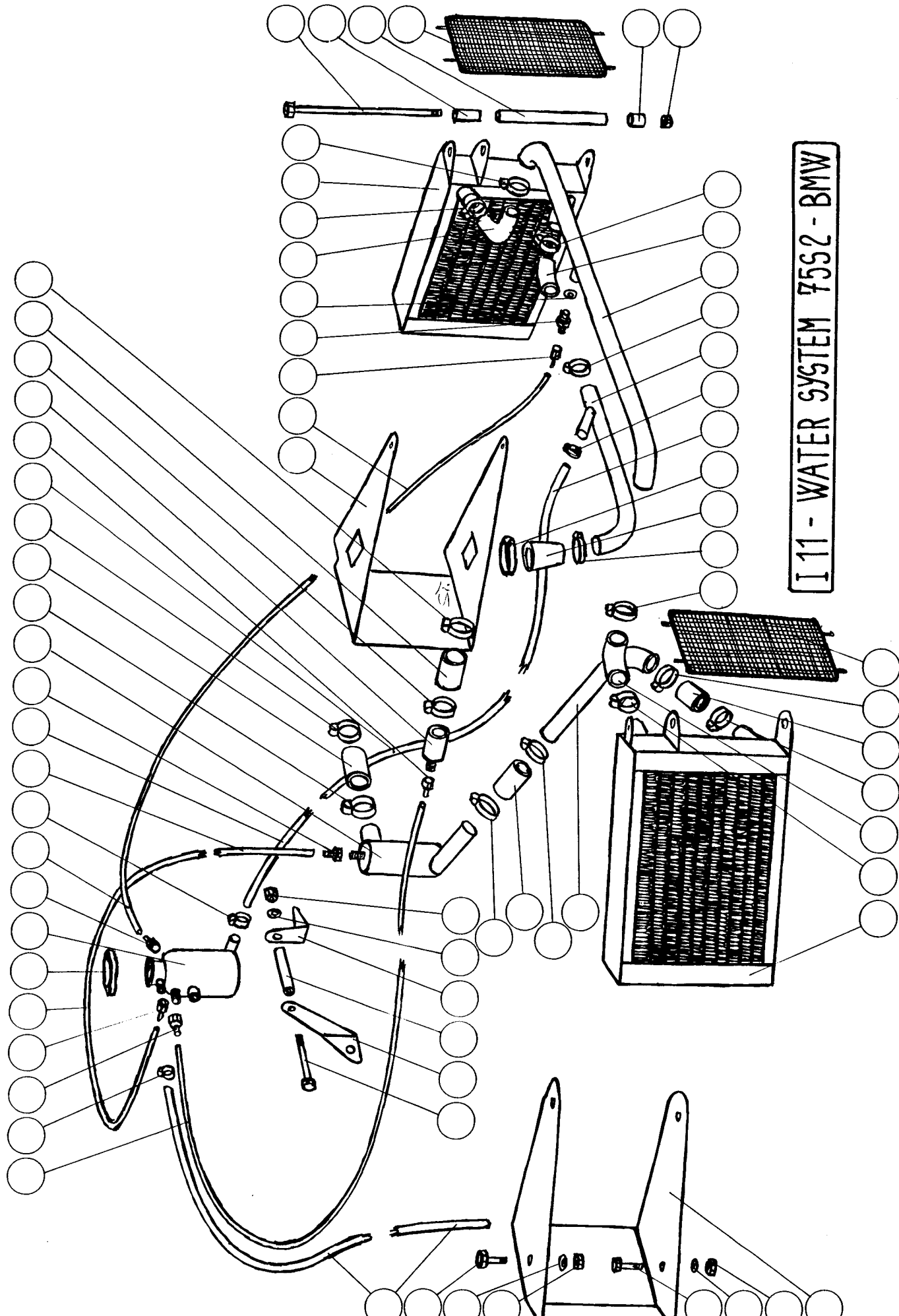


G7 - TRANSMISSION 7552

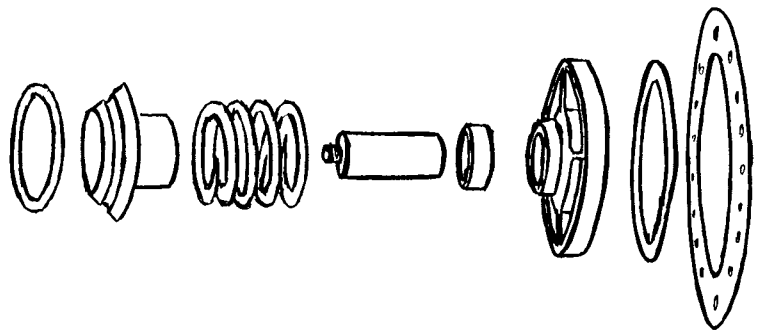
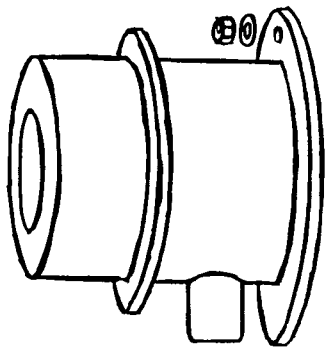
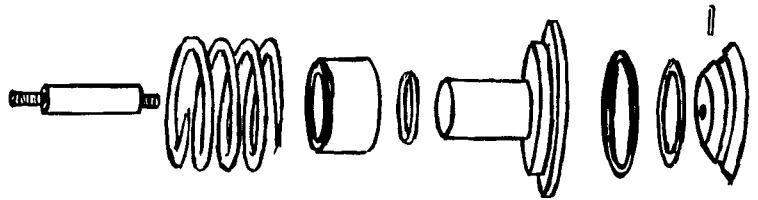
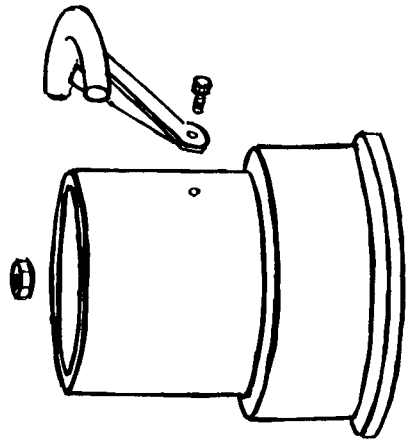


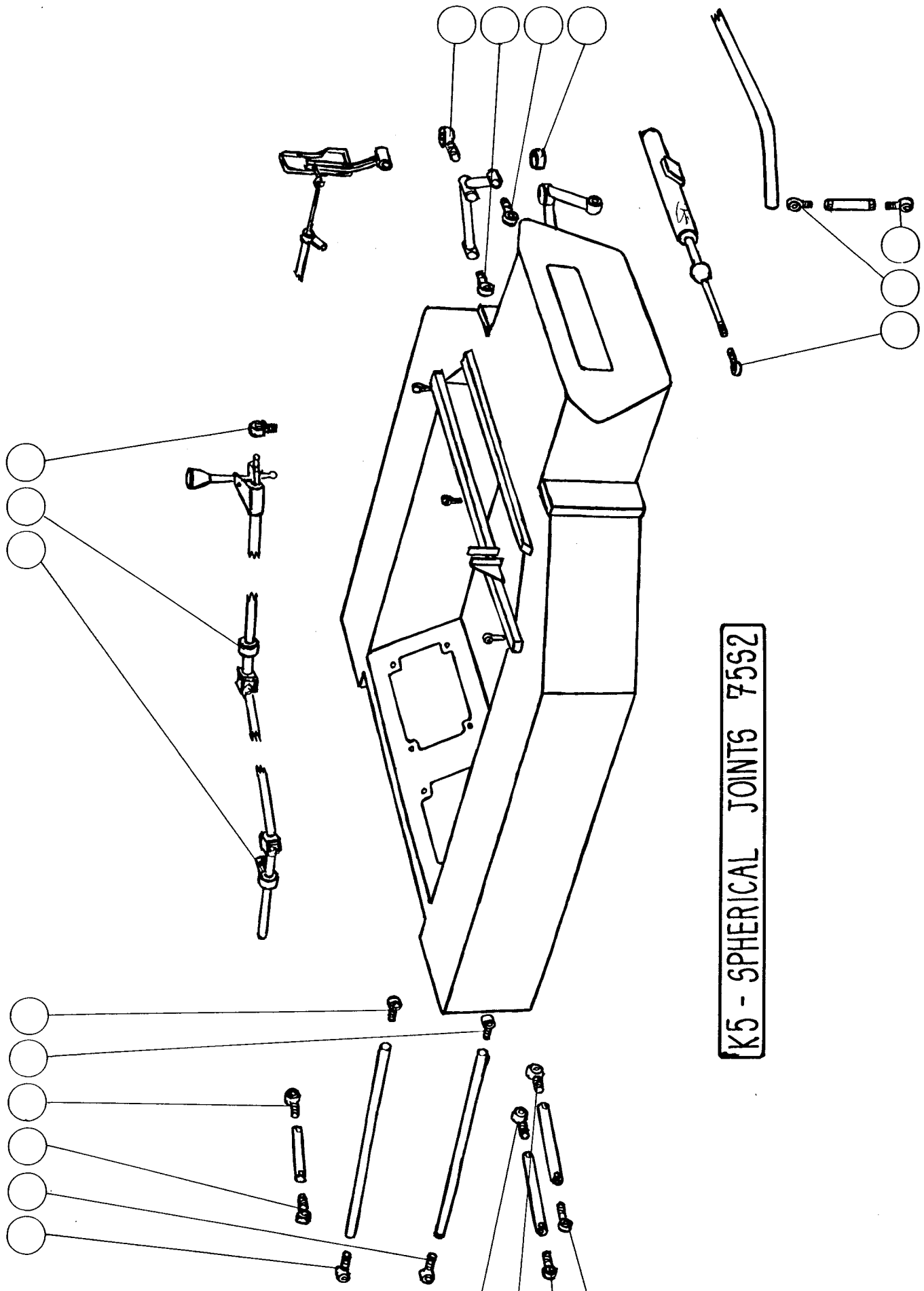


H11 - OIL SYSTEM 7592 BMW

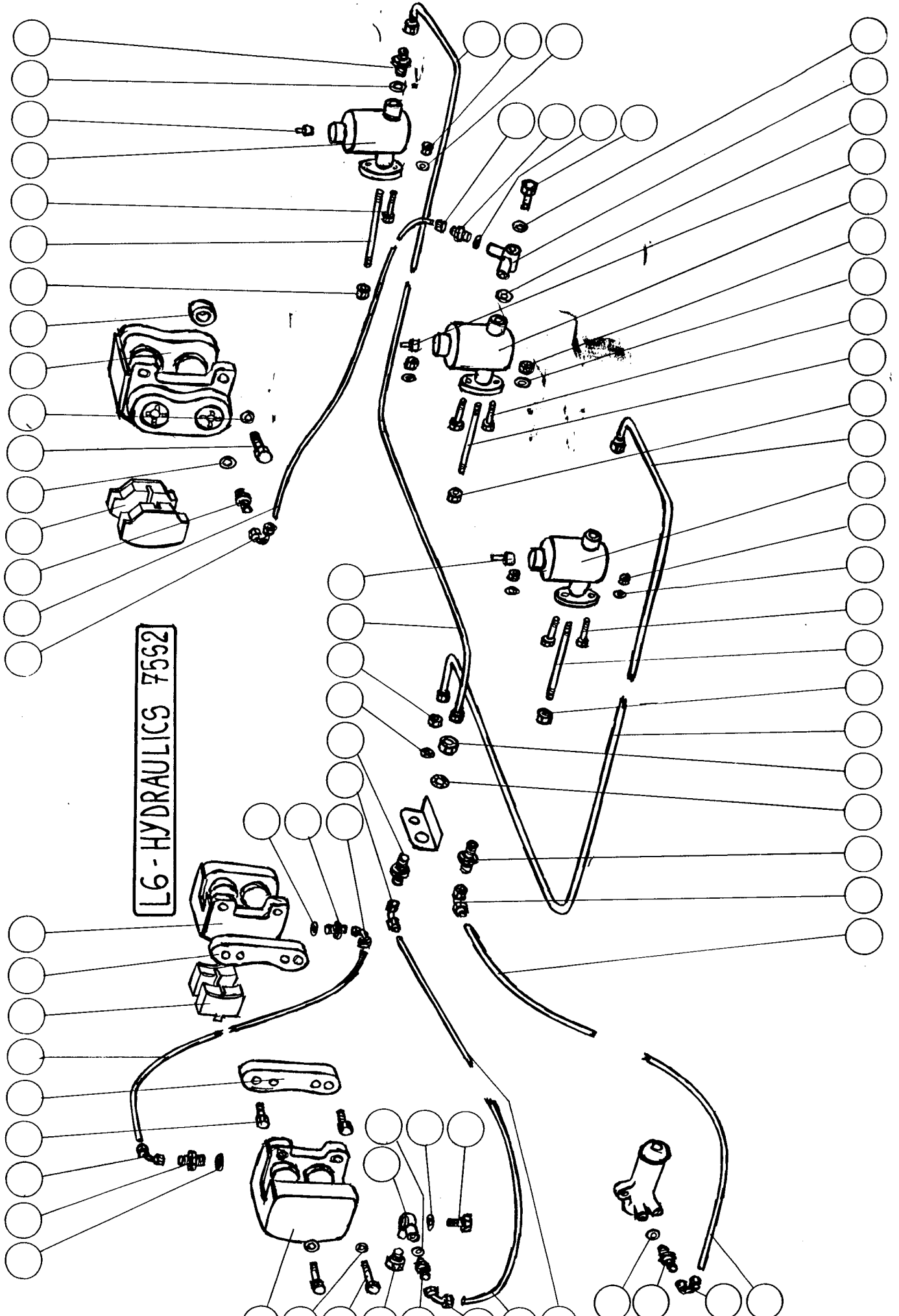


I11 - WATER SYSTEM 7552 - BMW

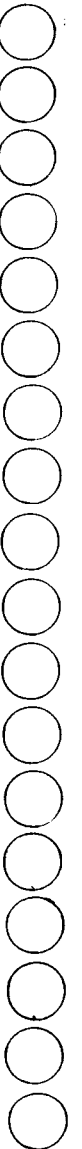
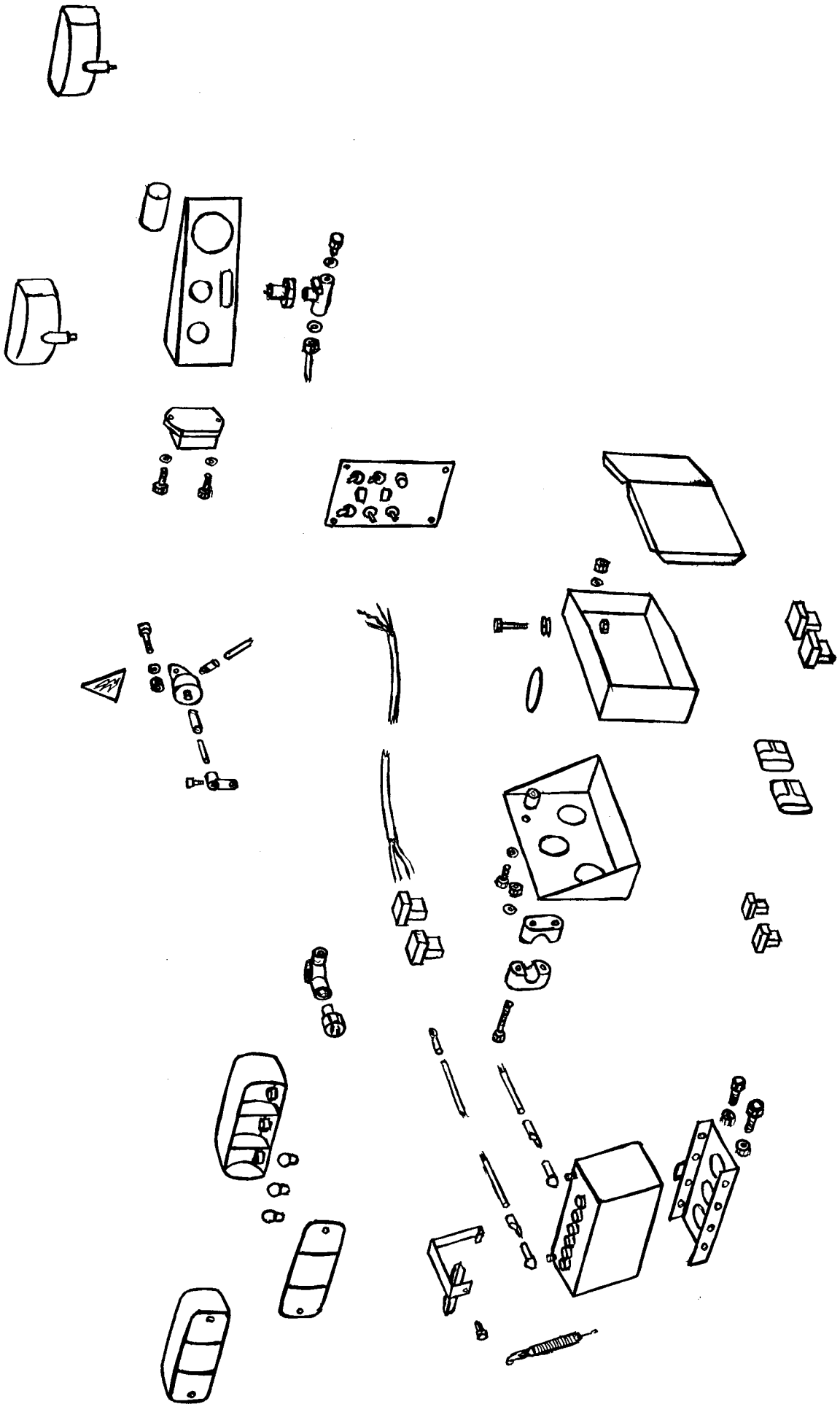
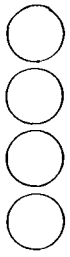


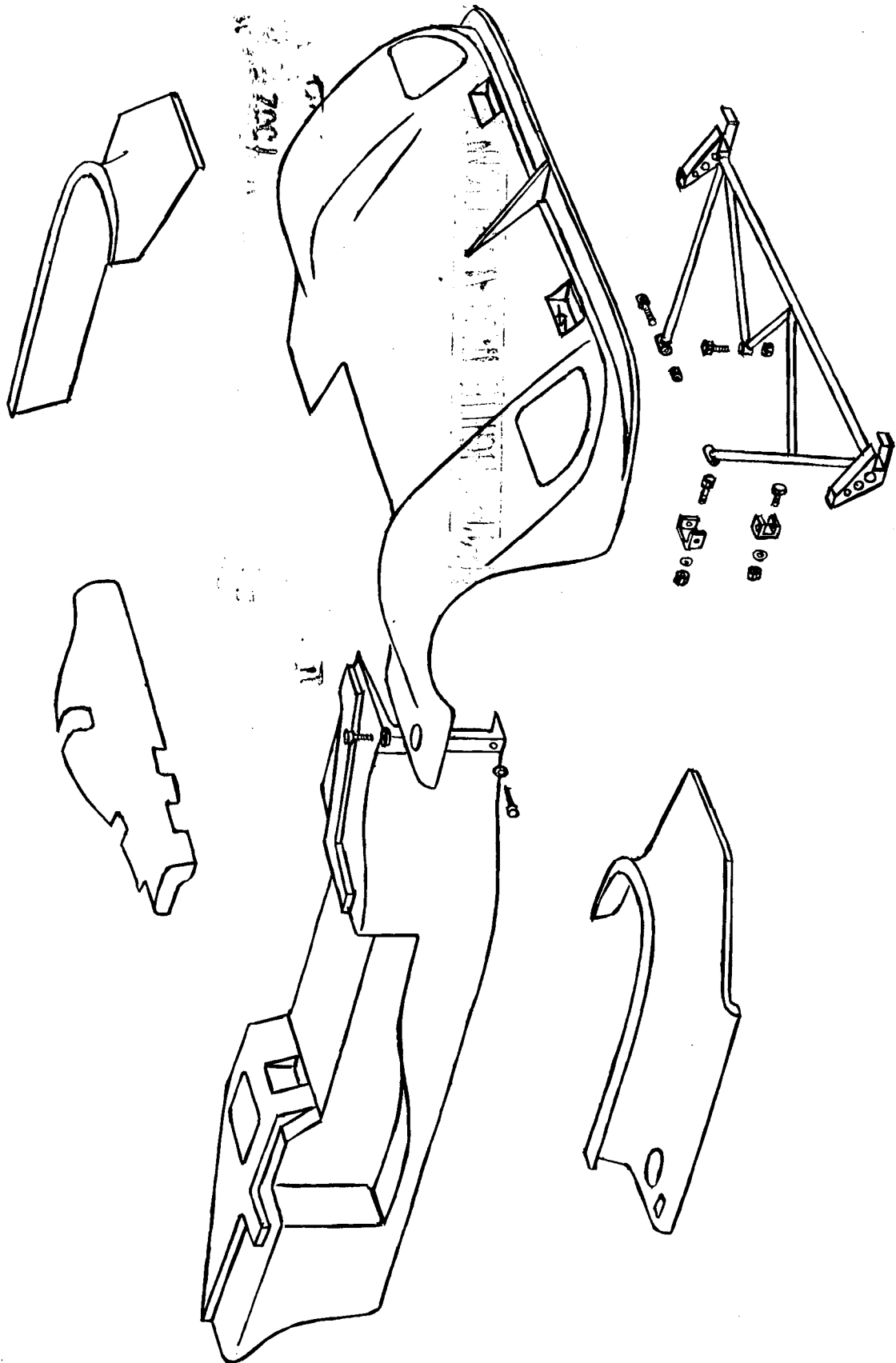


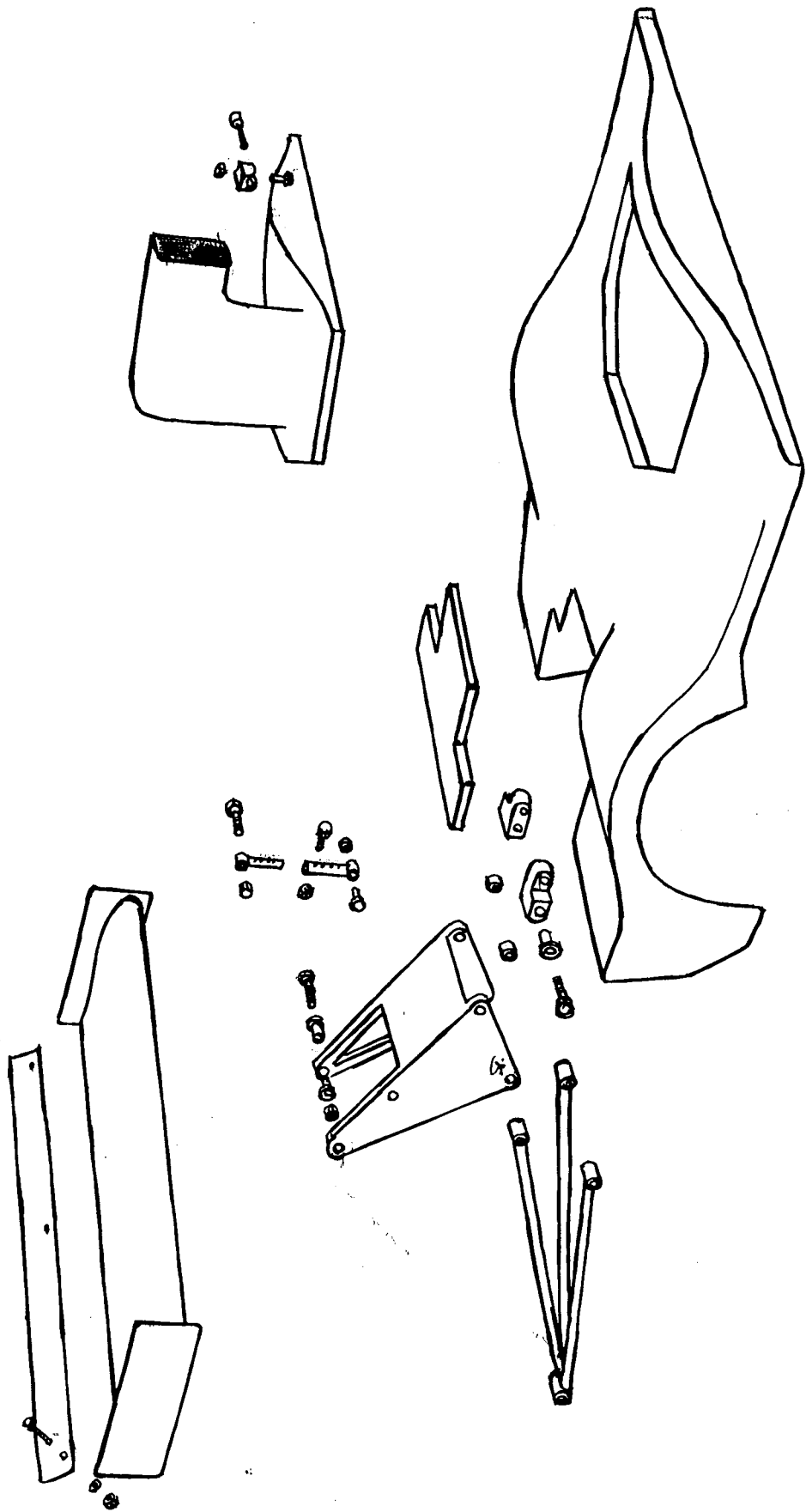
K5 - SPHERICAL JOINTS 7552



L6-HYDRAULICS 7592







J9

7552

NEW HART

SECTION J FUEL SYSTEM

ITEM	PART NO	NO. OFF PER ASSY.	PROD. RELEASE DATE	
* FUEL TANK L.H. (MODIFIED)	735-15-03	1		
* " " R.H. (MODIFIED)	735-15-02	1		
COLLECTOR POT	735-15-06	1		2.2.15
HIGH PRESSURE FUEL PUMP	TD 268	1	16 AUG 74 JRH	9.1.7
PRESSURE RELIEF VALVE	TD 270	1	29 AUG 74 JRH	4.1.8
				6.1.13
FUEL FILTER END m/c	753-15-02	1	11 OCT 74 JRH	
FUEL FILTER END m/c	753-15-03	1	11 OCT 74 JRH	
FUEL SYSTEM FLAP VALVE	TD 319	1	25 SEPT 74 JRH	21.2.14
FUEL FILTER ELEMENT		1		
FUEL FILLER PIPE	755-15-10	2		
<u>PANCAKE FILTER ASSEMBLY</u>				
COMPRISING				
FILTER HOUSING	751-15-06	1	11 OCT 74 JRH	
FILTER LID	751-15-07	1	11 OCT 74 JRH	
FILTER GAUZE	751-15-08	1	11 OCT 74 JRH	
FILTER FELT	751-15-09	1	11 OCT 74 JRH	
FILTER 'O' RING	TD 288	1	11 OCT 74 JRH	
FILTER CIRCLIP	TD 289	1	11 OCT 74 JRH	
FUEL BREATHER PIPE VALVE	753-15-04	1	11 OCT 74 JRH	
<u>FUEL TOWER ASSEMBLY</u>				
COMPRISES				
FUEL TOWER BODY	755-15-10	1	7 NOV 74 JRH	
NON-RETURN VALVE DISC	755-15-11	1		
SPRING	755-15-12	1		
SPINDLE	755-15-13	1		
BUSH	755-15-14	1		
BEARING BODY (SPOKE WHEEL)	755-15-15	1		
'O' RING	TD 680	1		
CIRCLIP	TD 681	1		
PANCAKE FILTER PRESSURE ADAPTOR	752-14-04	1		
FUEL CROSS OVER PIPE	755-15-29	1		
RUBBER 90° HOSE	TD 22	2		
PANCAKE FILTER MTG BRKT	752-15-12	1		
* SUBSEQUENTLY				
FUEL TANK LH	755-15-01	1		

J4

75S2

SECTION J FUEL SYSTEM

BDG

ITEM	PART NO	NO. OFF PER ASSY.	PROD. RELEASE DATE
* FUEL TANK L.H. (MODIFIED)	735-15-03	1	
* " " R.H. (MODIFIED)	735-15-02	1	
COLLECTOR POT	735-15-06	1	2.2.15
HIGH PRESSURE FUEL PUMP	TD 268	1	16 AUG 74 JRH 9.1.7
PRESSURE RELIEF VALVE	TD 270	1	29 AUG 74 JRH 9.1.8
FUEL FILTER END m/c	753-15-02	1	11 OCT 74 JRH 6.1.13
FUEL FILTER END m/c	753-15-03	1	11 OCT 74 JRH
FUEL SYSTEM FLAP VALVE	TD 319	1	25 SEPT 74 JRH 21.2.14
FUEL FILTER ELEMENT		1	
PANCAKE FILTER M/G BRACKET	752-15-12	1	
PANCAKE FILTER ASSEMBLY		1	
<u>COMPRISING</u>			
FILTER HOUSING	751-15-06	1	11 OCT 74 JRH
FILTER LID	751-15-07	1	11 OCT 74 JRH
FILTER GAUZE	751-15-08	1	11 OCT 74 JRH
FILTER FELT	751-15-09	1	11 OCT 74 JRH
FILTER 'O' RING	TD 288	1	11 OCT 74 JRH
FILTER CIRCLIP	TD 289	1	11 OCT 74 JRH
FUEL BREATHER PIPE VALVE	753-15-04	1	11 OCT 74 JRH
FUEL TOWER ASSEMBLY	755-15-16	2	
<u>COMPRISES</u>			
FUEL TOWER BODY	755-15-10	1	7 NOV 74 JRH
NON-RETURN VALVE DISC	755-15-11	1	
SPRING	755-15-12	1	
SPINDLE	755-15-13	1	
BUSH	755-15-14	1	
BEARING BODY (SPOKE WHEEL)	755-15-15	1	
'O' RING	TD 680	1	
CIRCLIP.	TD 681	1	
PANCAKE FILTER PRESSURE ADAPTOR	752-14-04	1	
FUEL CROSSOVER PIPE	755-15-29	1	
RUBBER 90° HOSE	TD 22	2	
* SUBSEQUENTLY			
FUEL TANK L.H.	755-15-01	1	